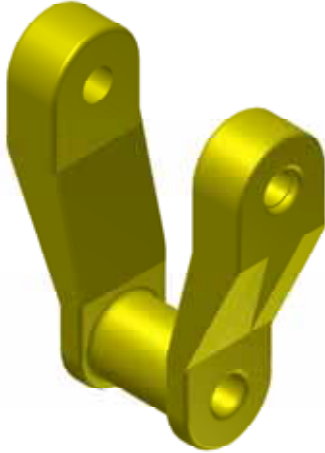


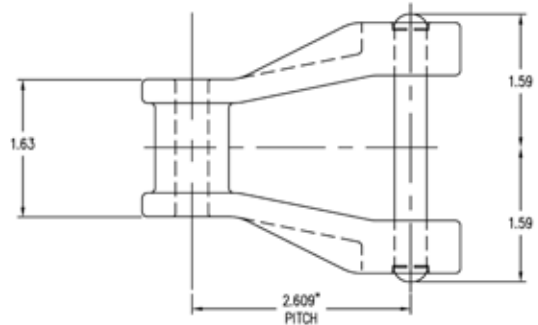
Drive Chain



Allied-Locke Industries' **NH78** drive chain is perfect for rectangular clarifier power transmission needs. The chain is made from injection molded Nylon-6 for superior corrosion resistance and strength. Links are connected with stainless steel pins that are rounded at both ends. This chain is excellent for areas where design clearances are tight. If the chain is to be used as a collector chain for tolerance reasons, F2 attachments are available so it can be connected to a flight. As a drive chain it is designed to travel with the barrel end forward. Recommended direction of travel as a conveyor chain is open end forward. It is also available in stainless steel and cast promal for applications when more torque is to be transmitted.

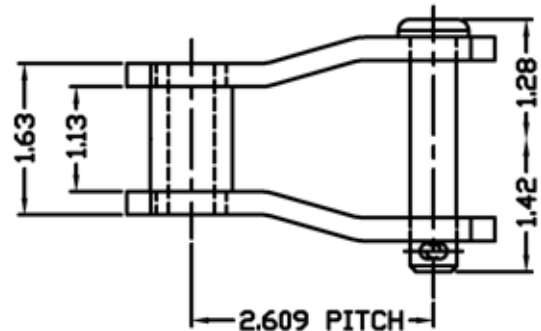
Non-Metallic Chain – NH78

Pitch in Inches	2.609
Links per 10 Feet	46
Weight per Foot in Lbs.	1.5
Average Ultimate Strength in Lbs.	3,100
Working Load in Lbs.	1,750
Pin Diameter in Inches	0.38
Maximum Allowable Sprocket Face in Inches	0.94



Stainless Steel Metallic Chain – MSS78

Pitch in Inches	2.609
Links per 10 Feet	46
Weight per Foot in Lbs.	4.2
Average Ultimate Strength in Lbs.	24,000
Working Load in Lbs.	3,300
Pin Diameter in Inches	0.500
Maximum Allowable Sprocket Face in Inches	1.05



Promal Metallic Chain – H78

Pitch in Inches	2.609
Links per 10 Feet	46
Weight per Foot in Lbs.	2.9
Average Ultimate Strength in Lbs.	14,300
Working Load in Lbs.	2,130
Pin Diameter in Inches	0.44
Maximum Allowable Sprocket Face in Inches	0.94

