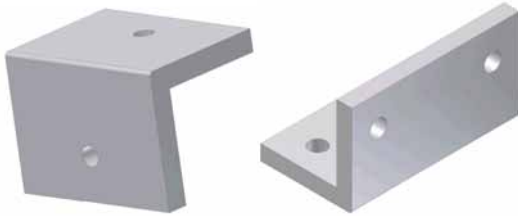
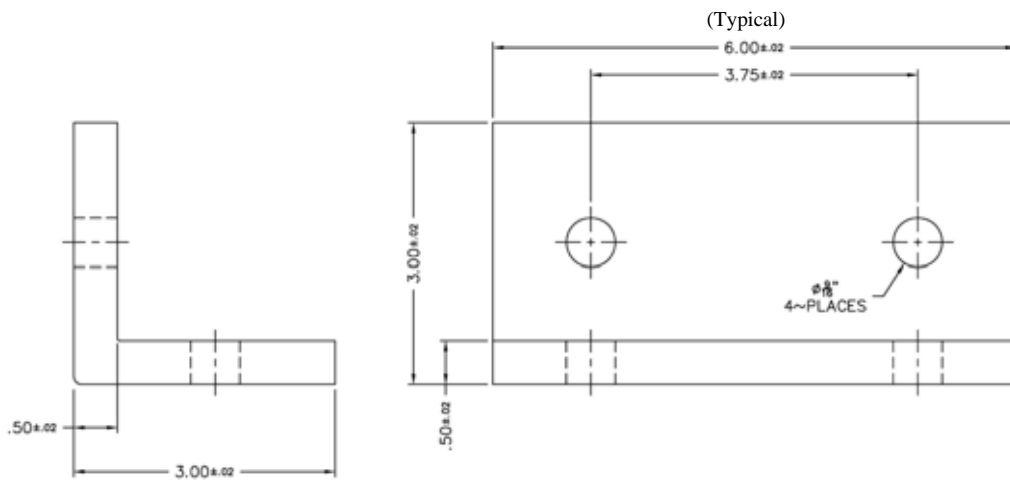


Wear Shoes

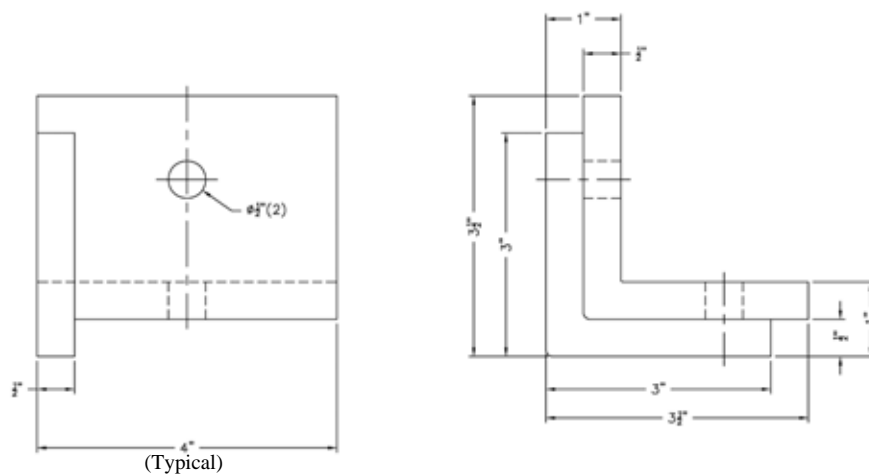
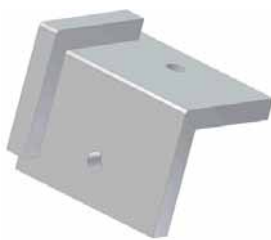


Allied-Locke Industries' reversible flight **wear shoes** are manufactured mainly from Ultra High Molecular Weight Polyethylene (UHMW-PE). This makes for high corrosion resistance, high abrasion resistance, and low friction. The low friction that is experienced

makes these wear shoes more attractive than heavy metal wear shoes. Wear Shoes can also be made from nylon, polyurethane, steel or other materials at the customers' request. They also come in a vast variety of sizes to fit any flight. All wear shoes are designed to be reversible for extended life.



Carry Wear Shoes (General)



Return Wear Shoes (General)

Note: Can be made with or without guide lug