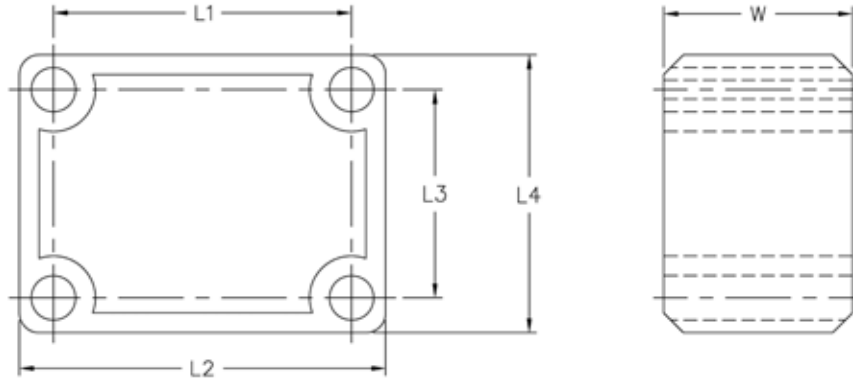


## Filler Blocks



Allied-Locke Industries' **filler blocks** for 720 chain attachments are molded from polypropylene to provide a sturdy, wear resistant support. Filler blocks act as spacers between the F22 attaching links and the flight. These are precision molded to make certain that there is proper alignment between the flight and the attachment link. Filler block size is based on which flight attachment is used



Typical Filler Block

Dimensions of Filler Blocks with Respective Flights

Dimension of Flight	Type of Flight			
	6"	8"	8" Maxi	78 Chain
L1	3-3/4"	3-3/4"	3-3/4"	2-3/8"
L2	4-5/8"	4-5/8"	4-5/8"	3-1/4"
L3	2-5/8"	4-1/2"	4-1/2"	2-3/8"
L4	3-1/2"	5-3/8"	5-3/8"	3-1/4"
W	2-3/8"	2-3/8"	2-7/8"	1-1/8"

## Wipers

Flights can be equipped with neoprene material, with or without fiberglass backing when more efficient removal of material is required, such as skimming a beach. Wipers can also be manufactured from UHMW-PE and no backing is required.



## Side Wipers

These wipers can be furnished on the side of flights to ensure positive cleaning of tank walls and provide full skimming width, similar to the bottom fit wipers above.

## Flight Hardware

Standard flight hardware is 3/8" normally in 304 or 316 Stainless Steel.