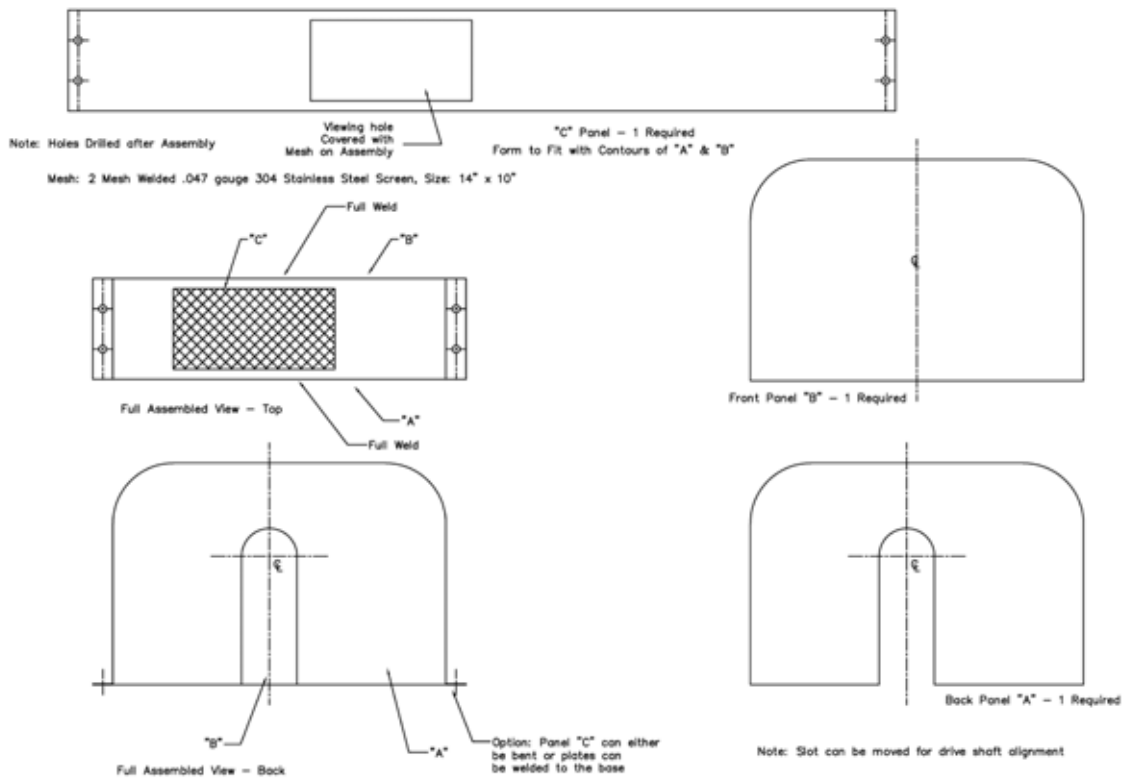


# Chain Guards

Chain guards can be made to cover the exposed drive chain. These can be made from a variety of sheet metals and furnished with meshed viewing holes. Chain guards can also be made in sections for easier removal and are normally mounted directly to the concrete.



Typical Chain Guard Assembly

Assemblies not limited to those shown

NOTE: Non-Metallic Chain Guards in some styles also available