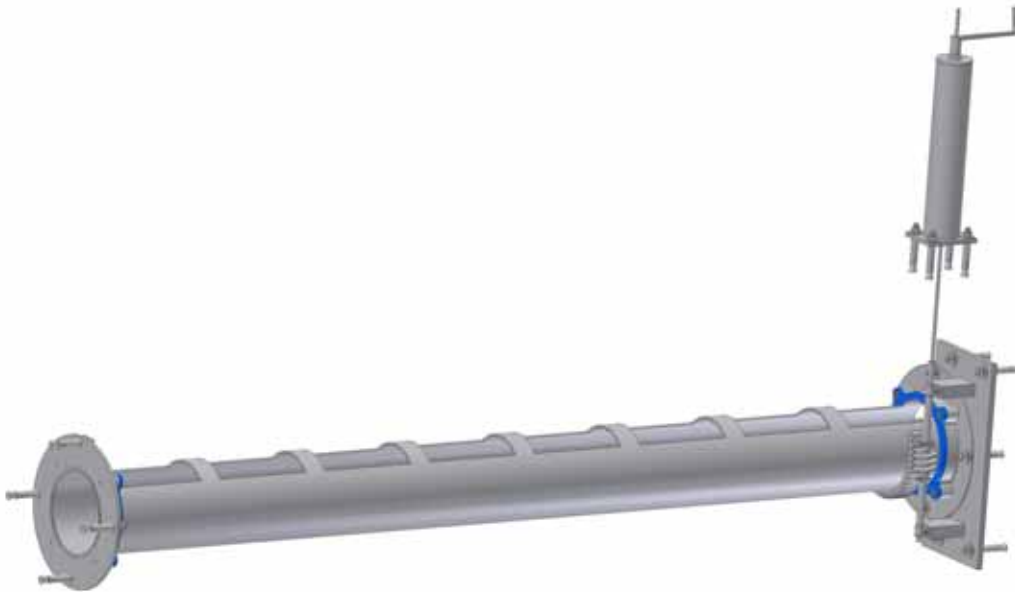


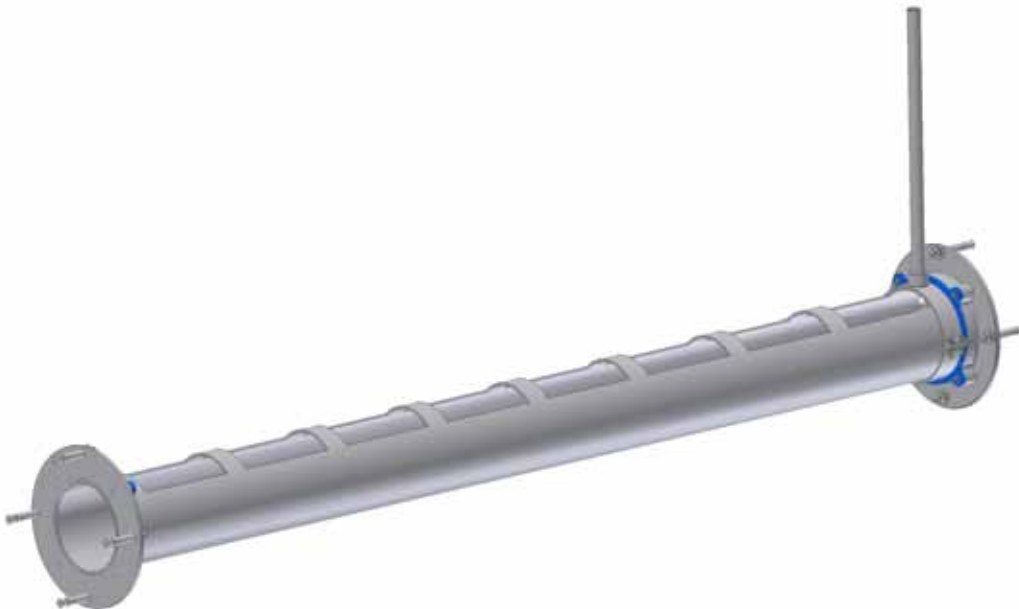
## Scum Trough

Allied-Locke Industries offers rotary scum troughs to use with the chain and flight systems to skim the surface of the water for scum. Either manual or motorized types exist to tilt the scum pipe depending on the needs of the application and the budget. Troughs can span tanks as wide as 26 feet and the trough is normally made of carbon steel, stainless steel, or non-metallic with a wide range of diameters in all materials.

---



Typical Manual Worm Gear Operated Scum Trough



Typical Manual Lever Operated Scum Trough

## **Screw Conveyor Cross Collector**

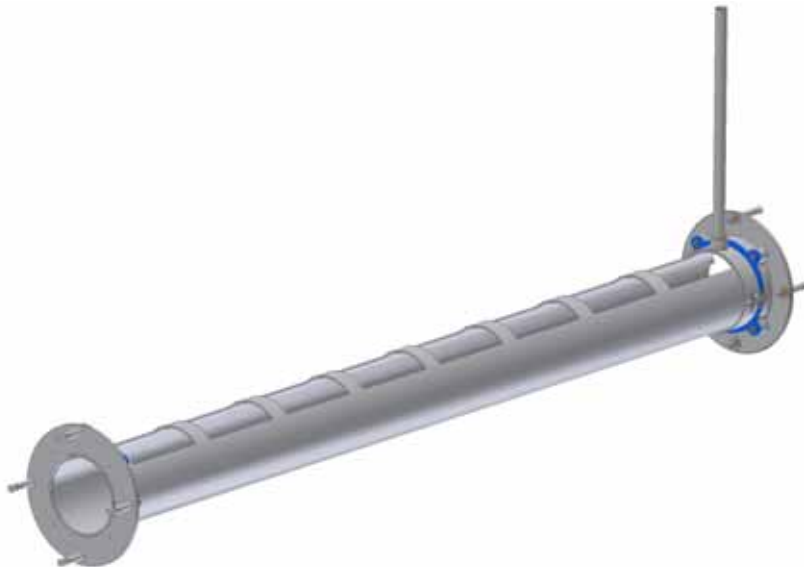
An alternative to the chain and flight cross collector, a screw conveyor can be utilized for the same purpose of concentrating the sludge into a sump pit. These can either be driven directly by a motor or an indirect chain drive (illustrated below). When these screw collectors span many hoppers or just a longer single hopper, hanger bearings are required.



Typical Screw Collector

## **Scum Trough Rotary Skimmers**

Scum troughs can either be operated manually (shown below) or with a motor to accept scum floating on the surface of the water in a four shaft collector. Available in many designs, they are the most economical making them the most common type of surface skimmer.



Typical Scum Trough