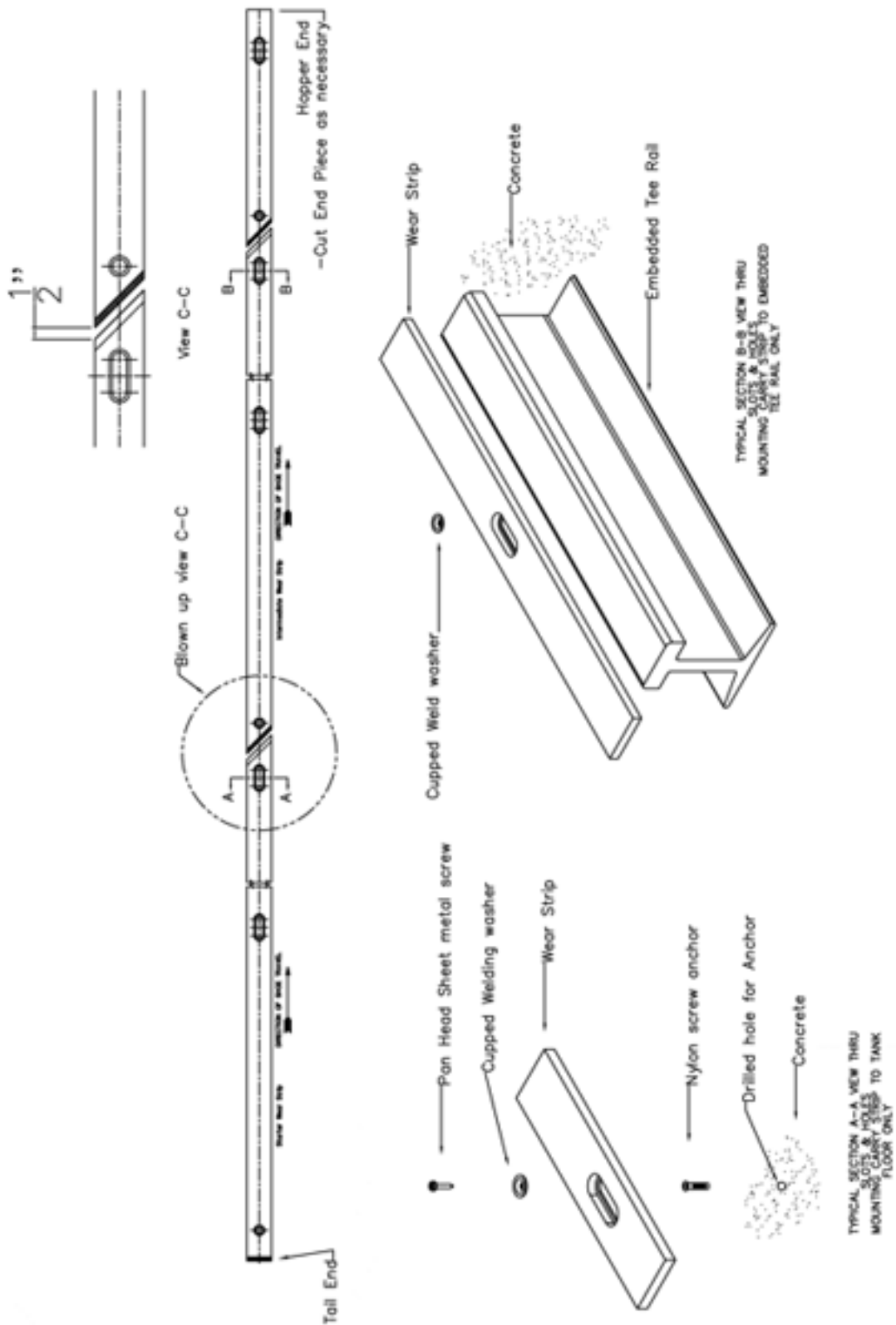
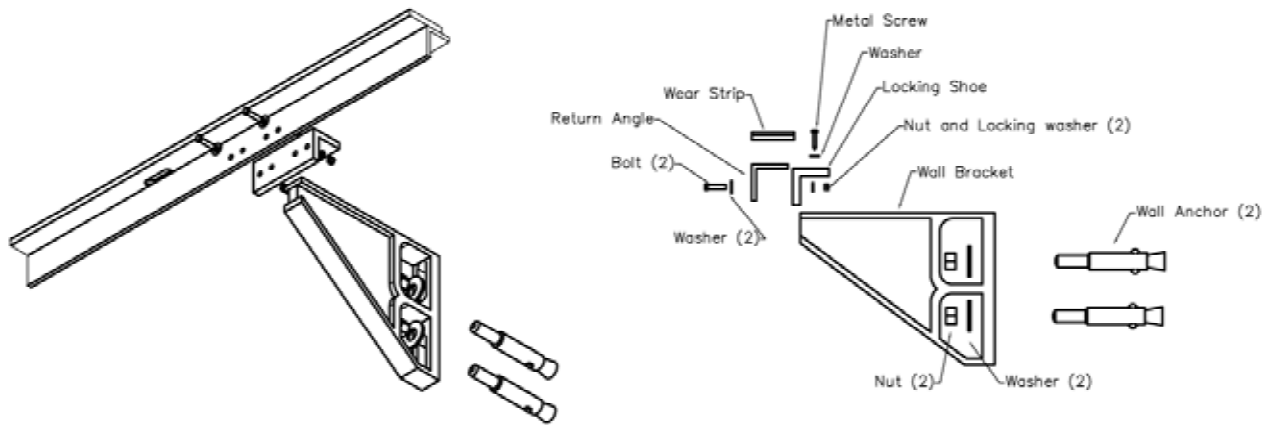


Carry (Floor) Wear Strip



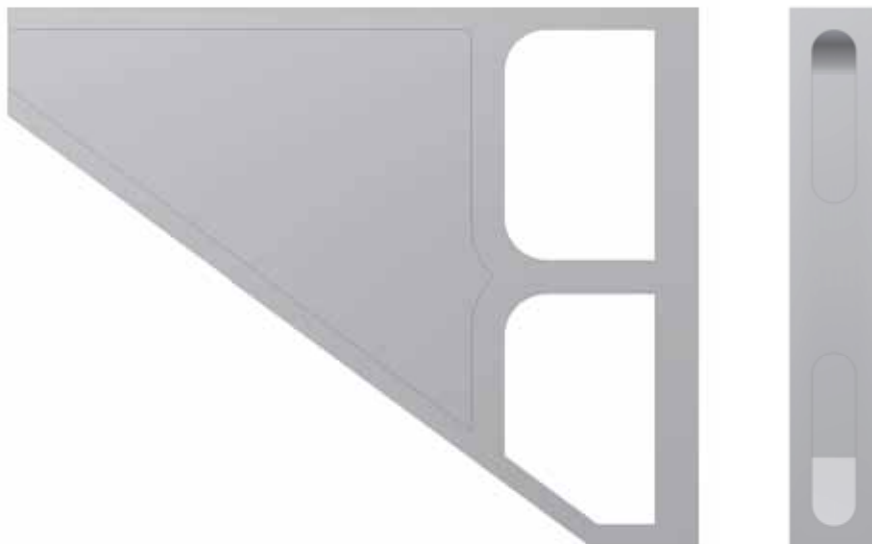
Return Tracks and Wall Bracket Supports

Allied-Locke Industries non-metallic return track and wall brackets are an alternative to heavy metal return guides and supports for a rectangular clarifier system. The return angle tracks are made of fiberglass reinforced polyester (FRP) and are easier than steel setups to install, adjust, and modify. The wall brackets are made out of cast Nylon, UHMW, or polypropylene with stainless steel hardware for attaching to the FRP return angle. The wear strips are then easily screwed into the top of the return angle for a desirable wear surface. Allied-Locke Industries can also make the return track and brackets out of carbon or stainless steel as is required by the customer.



Allied-Locke Industries Track Assembly

Allied-Locke Industries Non-Metallic Wall Bracket

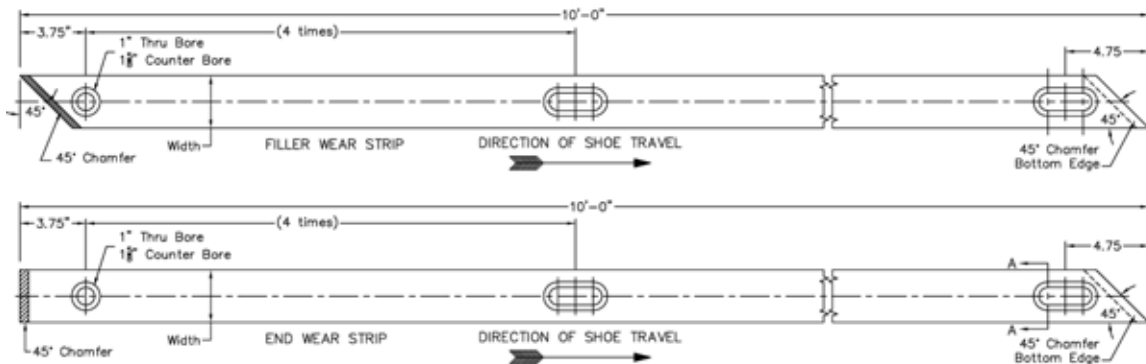


Wear Strips



Allied-Locke Industries **wear strips** can be made from a variety of materials. UHMW-PE is the most common because it is ideal for both metallic and non-metallic wear shoes. They also have a low coefficient of friction and allow the flight to run more

smoothly through the clarifier. UHMW wear strips are also non-corrosive and do not swell with water. The strips come with 1 hole to anchor the strip and 3 or 4 slotted holes to allow for thermal expansion. Beveled ends can also be provided. The weld washers that each hole is fitted with are either 1/4" or 3/8" and allow for a secure anchor but provide the clearance for expansion. Other size hardware can be provided as specified by the client. The width and thickness of the wear strip depends on the specification of the customer and are made in a variety of choices. Strips normally come in 10 foot sections but can be supplied at various lengths as specified. Wear strips can also be made of metallic materials upon request.



Values of Dynamic Coefficients of Friction

UHMW-PE on Steel with water	.05 to .10
Steel on Steel with grease	.09 to .19
Steel on Steel dry	.57