

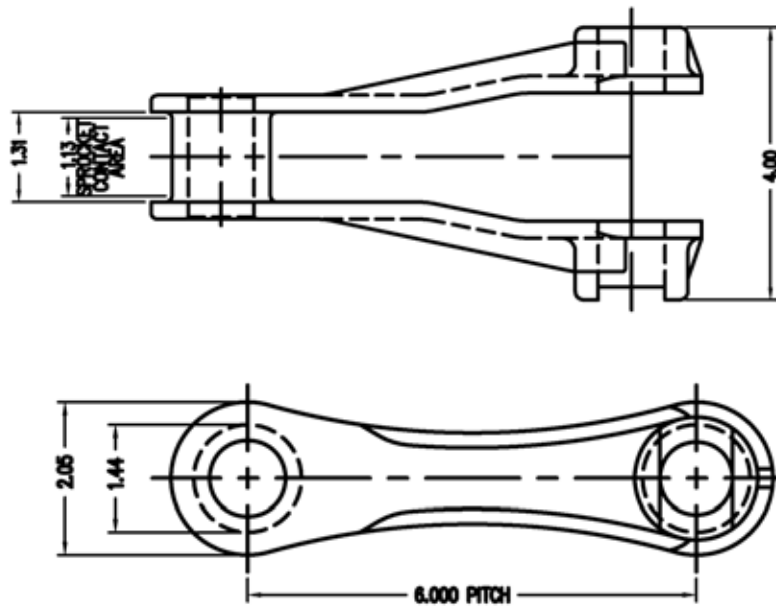
Collector Chain



Allied-Locke Industries' **NCS720S** is a non-metallic collector chain. The injection molding process is very reliable leaving no pockets of air yielding a uniform and strong link every time. It is ideal for the harsh conditions presented by sewage treatment plants because it is molded from Glass Reinforced Polyester that resists corrosion, elongation, and wear. The unique pin design prevents rotation during service and also helps to keep grit out. Collector chain is also available in stainless steel, welded steel, and cast iron for applications that require more strength.

Non-Metallic Chain – NCS720S

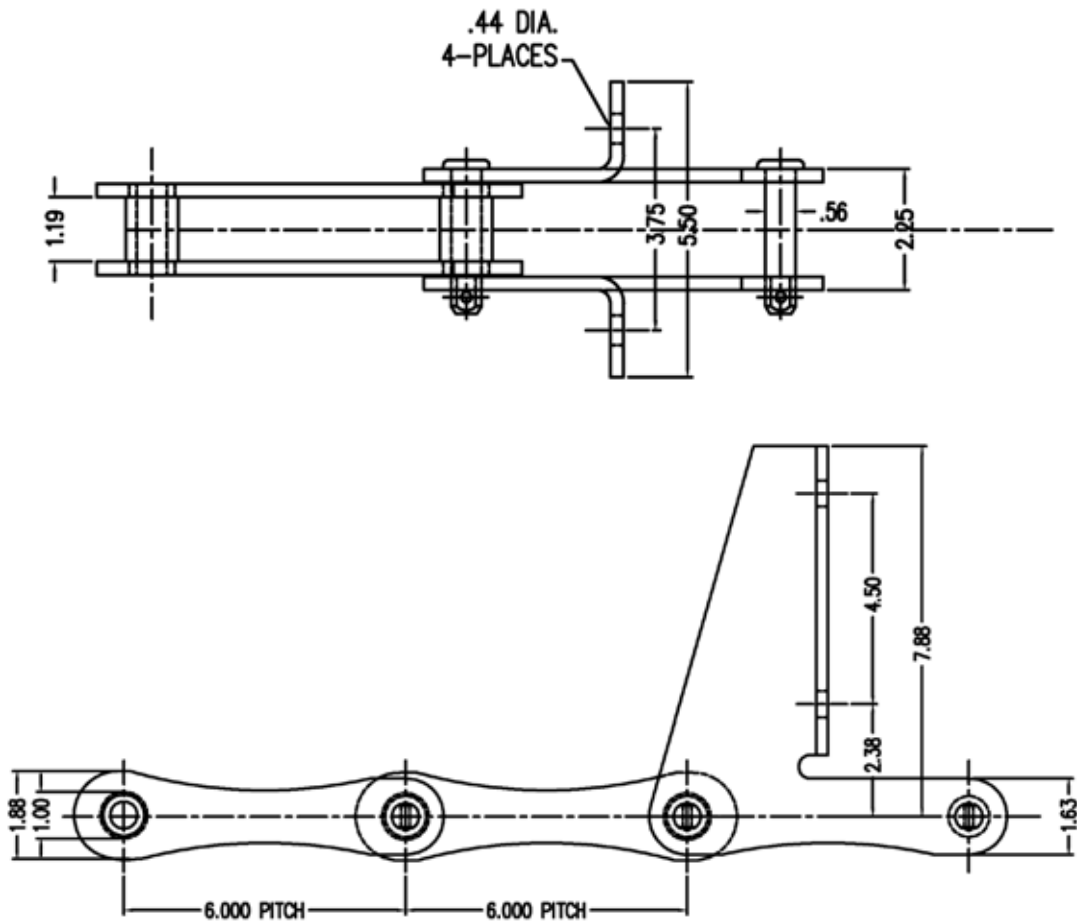
Pitch in Inches	6.00
Links per 10 Feet	20
Weight per Foot in Lbs.	1.5
Average Ultimate Strength in Lbs.	6,000
Working Load in Lbs.	3,100
Pin Diameter in Inches	0.93
Maximum Allowable Sprocket Face in Inches	1.12



Collector Chain

Stainless Steel Metallic Chain – SS715

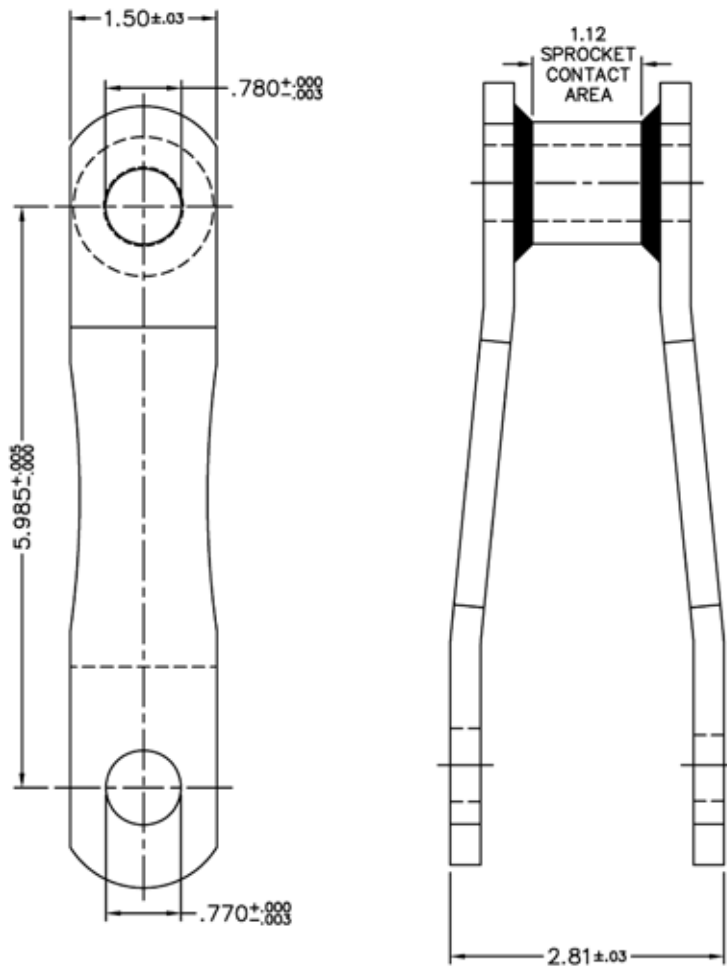
Pitch in Inches	6.00
Links per 10 Feet	20
Weight per Foot in Lbs.	3.9
Average Ultimate Strength in Lbs.	29,500
Working Load in Lbs.	5,000
Pin Diameter in Inches	0.562
Maximum Allowable Sprocket Face in Inches	1.05



Collector Chain

Welded Steel Metallic Chain- WH720CS

Pitch in Inches	6.00
Links per 10 Feet	20
Weight per Foot in Lbs.	5.7
Average Ultimate Strength in Lbs.	52,000
Working Load in Lbs.	5,650
Pin Diameter in Inches	0.750
Maximum Allowable Sprocket Face in Inches	1.12



Collector Chain

Cast Iron Metallic Chain- 720S

Pitch in Inches	6.00
Links per 10 Feet	20
Weight per Foot in Lbs.	5.2
Average Ultimate Strength in Lbs.	39,000
Working Load in Lbs.	4,200
Pin Diameter in Inches	0.750
Maximum Allowable Sprocket Face in Inches	1.12

Cast Iron Metallic Chain- MS 720 S

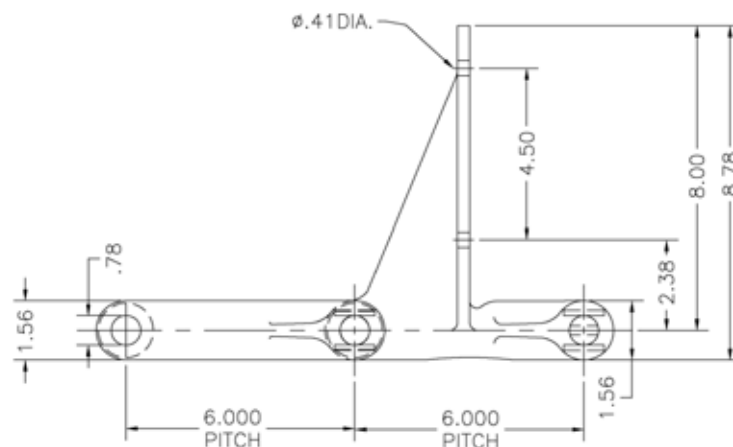
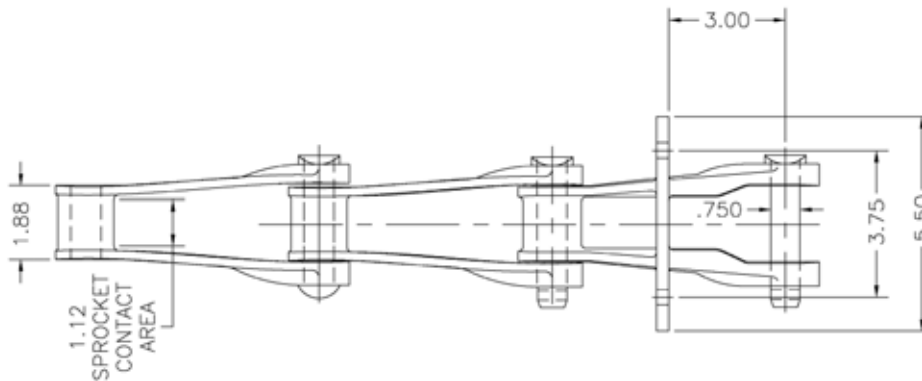
Pitch in Inches	6.00
Links per 10 Feet	20
Weight per Foot in Lbs.	6.2
Average Ultimate Strength in Lbs.	42,000
Working Load in Lbs.	4,200
Pin Diameter in Inches	0.750
Maximum Allowable Sprocket Face in Inches	1.12

Cast Iron Metallic Chain- 720

Pitch in Inches	6.00
Links per 10 Feet	20
Weight per Foot in Lbs.	4.2
Average Ultimate Strength in Lbs.	28,600
Working Load in Lbs.	3,720
Pin Diameter in Inches	0.750
Maximum Allowable Sprocket Face in Inches	1.12

Cast Iron Metallic Chain- 730

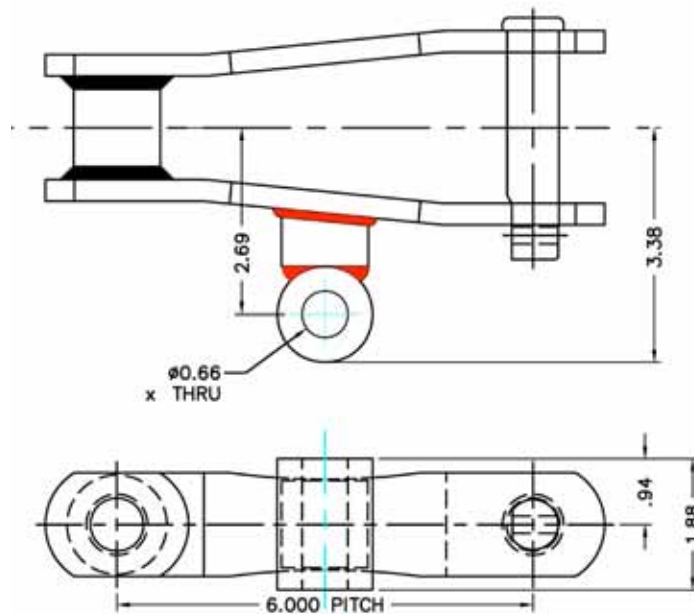
Pitch in Inches	6.00
Links per 10 Feet	20
Weight per Foot in Lbs.	6
Average Ultimate Strength in Lbs.	39,000
Working Load in Lbs.	4,500
Pin Diameter in Inches	0.750
Maximum Allowable Sprocket Face in Inches	1.12



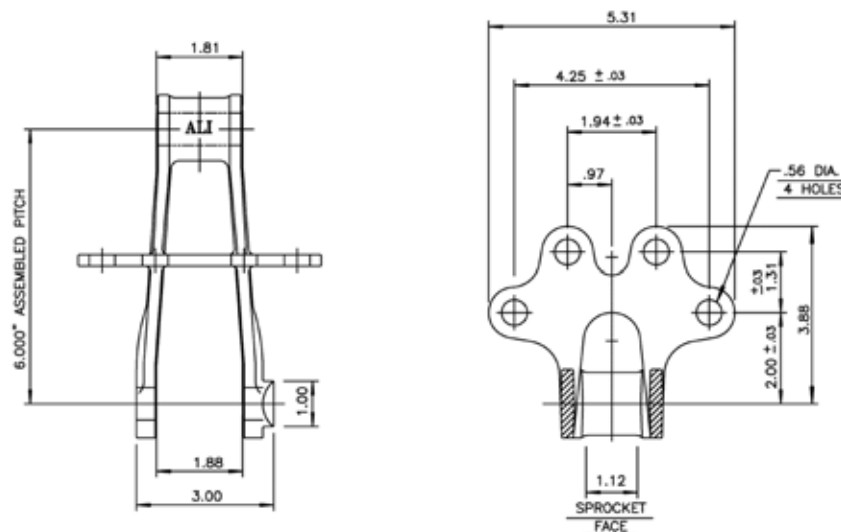
720S Chain Shown

Collector Chain Attachments

Allied-Locke Industries offers a wide variety of attachment links to fit a variety of needs. The most common after the F22 type of attachment are the F2, AM116, and A2 attachment links. These other types of attachment links are only available in metallic chain. Not all attachment links are available for all metallic chain. The F2 attachment is available for all previously mentioned metallic chains while the AM116 is only offered on the 720 and 720S cast chains and can be quoted for welded steel chain. The A2 (not shown) attachment is available for all chain except the 720 cast iron chain. For a complete list of attachment links please view our catalog or visit us online.

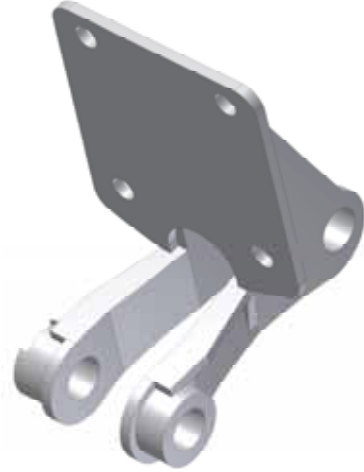


AM 116 Attachment Link for WH720CS Chain



F2 Attachment Link for 720 Chain

Flight Attachments



Allied-Locke Industries' **NCS720S F226 or F228** attachment links connect to NCS720S chain and bolt to collector flights. These are normally connected every 10 ft. (or every 20th pitch length) for longitudinal collectors and every 5 ft. (or every 10th pitch length) for cross collectors. These links are made from the same non-metallic material as the plain chain links and are used in conjunction with filler blocks to connect to the flights. There are also attachments for the stainless steel, cast iron, and welded steel collector chains, as well as the 78 class drive chain, metallic and non-metallic.

Non-Metallic Attachments

Pitch in Inches	6.00
Links per 10 Feet	As Specified
Weight per Foot in Lbs.	1.5
Average Ultimate Strength in Lbs.	6,000
Working Load in Lbs.	3,100
Pin Diameter in Inches	0.93
Maximum Allowable Sprocket Face in Inches	1.12

