

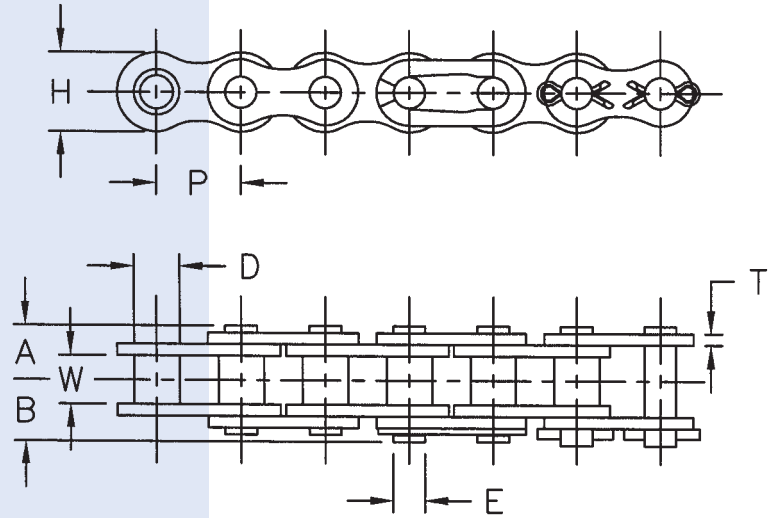
# ROLLERLESS CHAIN SELF-LUBE CHAIN



## SELF-LUBE SINGLE STRAND

Self-lube roller chain (sintered bushing) assures seizure-free, long life when normal lubrication is not possible or restricted in cases such as textiles, packing, and printing machines. Self lube roller chain is interchangeable with ANSI roller chain and workable on standard ANSI sprockets.

“SL” is added for identification.



Dimensions In Inches										
ANSI Chain No.	Pitch P	Roller		Riv. End to Center Line A	Conn. End to Center Line B	Link Plate		Pin Dia. E	Avg. Ultimate Strength Lbs.	Avg. Weight Lbs./Ft.
		Width W	Dia. D			Height H	Thickness T			
40SL	1/2	.312	.312	.321	.368	.475	.058	.156	2,760	0.40
50SL	5/8	.375	.400	.399	.455	.594	.079	.200	4,640	0.65
60SL	3/4	.500	.469	.497	.551	.712	.093	.234	5,960	0.91
80SL	1	.625	.625	.645	.724	.950	.125	.312	11,470	1.63
C2040SL	1	.312	.312	.321	.368	.475	.058	.156	2,760	0.30
C2050SL	1 1/4	.375	.400	.399	.455	.594	.079	.200	4,640	0.50
C2060SL	1 1/2	.500	.469	.497	.551	.712	.093	.234	5,960	0.73
C2060HSL	1 1/2	.500	.469	.570	.625	.712	.125	.234	7,060	0.79
C2080HSL	2	.625	.625	.720	.873	.950	.157	.312	11,800	1.34

## ROLLERLESS CHAIN-SINGLE STRAND

Rollerless chain has the same strength and size as ANSI standard chain. Designed to withstand continual wearing action, rollerless chain is ideal for lifting services or tension linkage applications.

The numbering of the rollerless chain is given by substituting the last “0” with “5” as in the table below.

Dimensions In Inches										
ANSI Chain No.	Pitch P	Bushing		Riv. End to Center Line A	Conn. End to Center Line B	Link Plate		Pin Dia. E	Avg. Ultimate Strength Lbs.	Avg. Weight Lbs./Ft.
		Width W	Dia. D			Height H	Thickness T			
55	5/8	.375	.278	.400	.455	.594	.079	.200	6,620	0.56
65	3/4	.500	.330	.497	.551	.712	.093	.234	9,270	0.79
85	1	.625	.443	.645	.724	.950	.125	.312	15,880	1.40
105	1 1/4	.750	.535	.789	.941	1.190	.157	.375	25,360	2.24

Allied-Locke Industries Inc. . . . chain - sprockets - buckets [www.alliedlocke.com](http://www.alliedlocke.com)