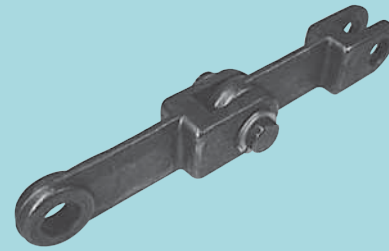
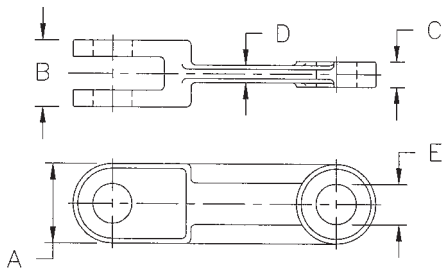


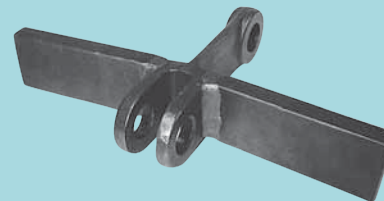
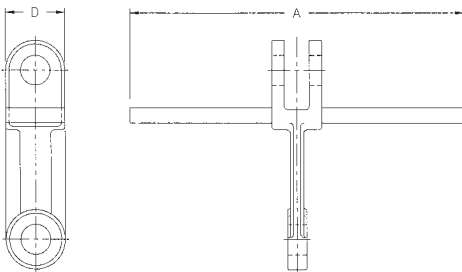


CASE CONVEYOR CHAIN FLIGHTS



CASE CONVEYOR CHAIN

CHAIN SERIES	ULTIMATE STRENGTH	WORKING LOAD	WEIGHT	A	B	C	D	E	F
102 HVY	38,000 Lbs 17,275 Kg	6,900 3,135	.99 .45	1.375" 35mm	1.26 32	.55 14	.354 9	.709 18	—
142 ST	73,000 Lbs 33,180 Kg	13,000 5,910	2.45 1.11	1.97" 50mm	1.65 42	.75 19	.47 12	.98 25	—
142 HVY	99,000 Lbs 45,000 Kg	18,000 8,182	3.74 1.7	1.97" 50mm	2.44 62	1.14 29	.63 16	.98 25	—
260 STD	150,000 Lbs 68,180 Kg	27,270 12,390	14.0 6.4	2.95" 75mm	2.76 70	1.18 30	.79 20	1.26 32	—



CONVEYOR SIZE	A	D	WEIGHT (FLIGHTS ONLY*) BT
102 SERIES			
10" 254mm	9.88 250	1.375 35	2.22 Lbs 1 Kg
12" 305mm	11.88 300	1.375 35	2.5 Lbs 1.14 Kg
14" 356mm	13.88 352	1.375 35	2.8 Lbs 1.27 Kg
16" 406mm	15.63 397	1.375 35	3.1 Lbs 1.41 Kg
142 STD SERIES			
11" 280mm	10.94 278	2.00 50	2.36 1.07
15" 380mm	14.88 378	2.00 50	3.41 1.55
19" 480mm	18.81 178	2.00 50	4.45 2.02
25" 635mm	24.69 627	2.00 50	6.01 2.73
30" 762mm	29.81 757.2	2.00 50	7.39 3.36

Allied-Locke Industries Inc.
... chain - sprockets - buckets

Toll Free:

Phone: 800-435-7752
Fax: 800-462-3130

Local:

Phone: 815-288-1471
Fax: 815-288-7945

www.alliedlocke.com