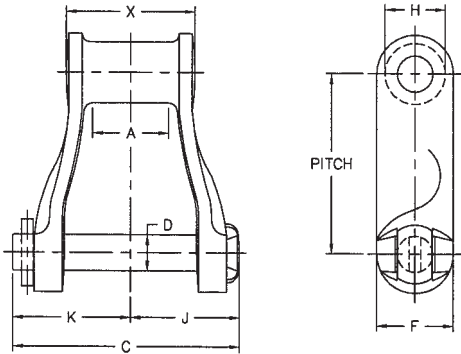
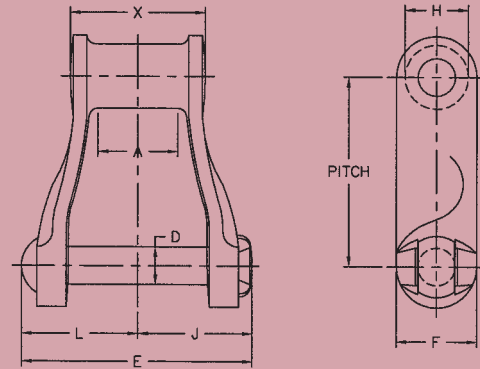




“H” CLASS MILL CHAIN



Cotted



Riveted

Available in riveted and cotted construction
Riveted furnished unless otherwise specified

ORDERING AND APPLICATION DATA

MOLINE CHAIN NO.	PITCH IN INCHES	LINKS PER 10 FEET	WEIGHT PER FOOT LBS.	AVERAGE ULTIMATE STRENGTH LBS.	RECOMMENDED MAXIMUM WORKING LOAD LBS.	CHAIN CONSTRUCTION	AVAILABLE ATTACHMENTS
H 60	2.308	52	2.1	9,450	1,560	Riveted or Cotted	H2, K1
H 74	2.609	46	3.0	13,500	1,850	Riveted or Cotted	F4
H 78	2.609	46	4.2	22,200	2,810	Riveted or Cotted	A1, F4, F8, G19, H1, H2, K1, K2
H 79	2.609	46	4.8	24,300	2,810	Riveted or Cotted	None
H 82	3.075	39	5.5	27,000	3,580	Riveted or Cotted	K2
H 87	4.000	30	6.5	33,750	4,450	Riveted or Cotted	None
H 124	4.000	30	8.8	40,500	6,180	Riveted or Cotted	K2

MOLINE CHAIN NO.	DIMENSIONS IN DECIMAL INCHES										
	PITCH	MAXIMUM ALLOWABLE SPROCKET FACE A	OVER-ALL WIDTH—COTTED C	DIAMETER OF PIN D	OVER-ALL WIDTH—RIVETED E	HEIGHT OF SIDEBARS F	DIAMETER OF BARREL H	HEAD OF PIN TO CENTER LINE J	END OF PIN TO CENTER LINE—COTTED K	END OF PIN TO CENTER LINE—RIVETED L	BEARING LENGTH X
H 60	2.308	0.75	2.62	0.312	2.62	0.75	0.75	1.25	1.38	1.38	1.50
H 74	2.609	1.00	3.12	0.375	2.88	1.00	0.88	1.50	1.62	1.62	1.66
H 78	2.609	1.12	3.31	0.500	3.19	1.12	0.88	1.56	1.62	1.62	1.88
H 79	2.609	1.12	3.31	0.500	3.19	1.12	0.88	1.56	1.62	1.62	1.88
H 82	3.075	1.25	3.88	0.562	3.88	1.25	1.22	1.88	2.00	2.00	2.12
H 87	4.000	1.50	4.38	0.625	4.19	1.38	1.38	2.06	2.12	2.12	2.38
H 124	4.000	1.62	4.88	0.750	4.75	1.56	1.44	2.25	2.50	2.50	2.75

Allied-Locke Industries Inc.

... the company that delivers

www.alliedlocke.com