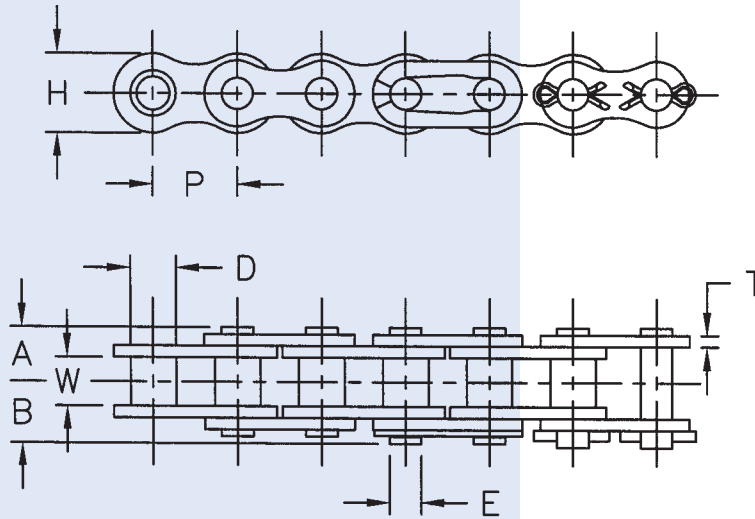


BRITISH STANDARD CHAIN



Dimensions In Inches

ANSI Chain No.	Pitch P	Roller		Riv. End to Center Line A	Conn. End to Center Line B	Link Plate		Pin Dia. E	Avg. Ultimate Strength Lbs.	Avg. Weight Lbs./Ft.
		Width W	Dia. D			Height H	Thickness T			
		04B-1	.236	.110	.157	.124	.179	.198	.024	.072
05B-1	.315	.118	.197	.152	.189	.280	.030	.091	1,150	0.11
06B-1	3/8	.225	.250	.253	.291	.325	.050	.129	2,250	0.28
08B-1	1/2	.305	.335	.321	.361	.465	.058	.175	4,080	0.44
10B-1	5/8	.380	.400	.385	.440	.580	.067	.200	5,850	0.62
12B-1	3/4	.460	.475	.440	.483	.635	.073	.225	7,060	0.81
16B-1	1	.670	.625	.702	.819	.830	.157	.326	15,880	1.79
20B-1	1 1/4	.770	.750	.786	.955	1.040	.175	.401	22,050	2.43
24B-1	1 1/2	1.000	1.000	1.059	1.256	1.315	.219	.576	36,830	4.47
32B-1	2	1.220	1.150	1.327	1.556	1.662	.275	.703	57,330	6.59
06B-2	3/8	.225	.250	.453	.488	.325	.050	.129	4,190	0.50
08B-2	1/2	.305	.335	.606	.642	.465	.058	.175	8,160	0.87
10B-2	5/8	.380	.400	.717	.776	.580	.067	.200	11,680	1.22
12B-2	3/4	.460	.475	.833	.873	.635	.073	.225	14,120	1.61
16B-2	1	.670	.625	1.326	1.418	.830	.157	.326	31,980	3.54
20B-2	1 1/4	.770	.750	1.493	1.670	1.040	.175	.401	44,100	4.81
24B-2	1 1/2	1.000	1.000	1.989	2.219	1.315	.219	.576	64,390	8.86
06B-3	3/8	.225	.250	.655	.690	.325	.050	.129	6,620	0.74
08B-3	1/2	.305	.335	.868	.908	.465	.058	.175	12,130	1.31
10B-3	5/8	.380	.400	1.044	1.103	.580	.067	.200	17,640	1.81
12B-3	3/4	.460	.475	1.215	1.254	.635	.073	.225	21,170	2.41
16B-3	1	.670	.625	1.959	2.058	.830	.157	.326	47,410	5.30
20B-3	1 1/4	.770	.750	2.216	2.413	1.040	.175	.401	66,150	7.22

Allied-Locke Industries Inc.

... reach for the star of quality

www.alliedlocke.com