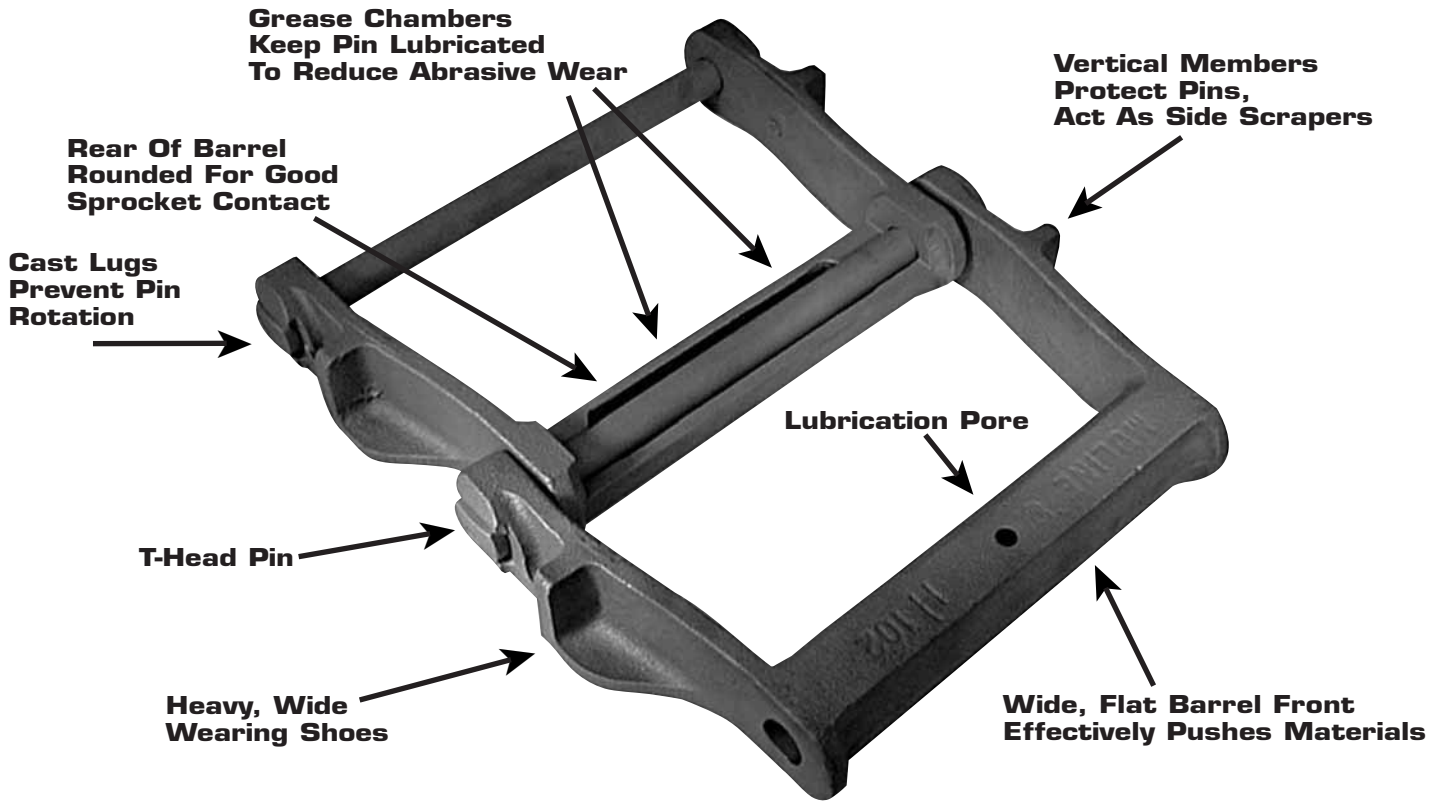


"H" CLASS REFUSE DRAG CHAIN



Moline Refuse Drag Chain is used for conveying sawdust, wood chips, pulp, garbage, tankage, ashes, and other abrasive waste materials through either wooden or steel troughs. Because of its large, wide opening area, Moline Refuse Drag Chain provides sizeable carrying capacity when operated at moderate speeds.

The front face of each barrel is flat, providing a broad area to push material along the trough and to keep the chain from riding over the top of the material. The rounded inner side of the barrel is carefully shaped to make excellent sprocket contact. Sidebars are reinforced with wearing shoes which provide both additional wearing surface and stiffening for the link. A vertical member on each sidebar assures added link rigidity and protects the pin from damage.

Moline Refuse Drag Chain is available in Moline Promal with a tensile strength range of 36,400 to 52,000 pounds. This rugged working chain is available in a pitch range of 5.000 to 8.000 inches. Each link is produced in accordance with manufacturer's standards and may be interchanged with links made by other chain manufacturers. Moline Refuse Drag Chain is available in riveted construction only. Grease chambers, cored into each link's barrel, hold grease which lubricates pins.

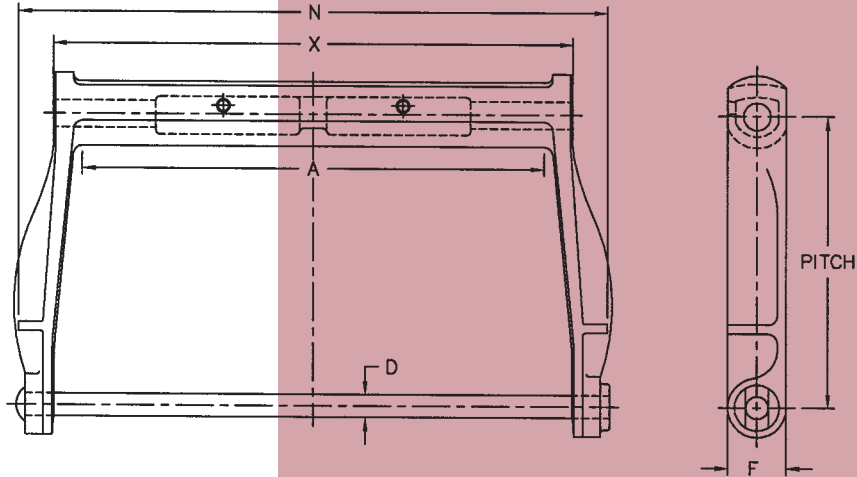
Wide faced sprockets, either of Brutaloy or cast steel, are recommended for Refuse Drag Chain operation. Links should always be run in the direction of the closed barrel.

"H" CLASS REFUSE DRAG CHAIN MATERIALS

MOLINE CHAIN NO.	CAST LINKS	PINS
H 102	ALL NUMBERS	ALL NUMBERS
H 104		
H 110		
H 112		
H 116	Moline Promal	Carbon Steel, Heat-Treated
H 120		
H 480		



"H" CLASS REFUSE DRAG CHAIN



Available in riveted construction only

ORDERING AND APPLICATION DATA

MOLINE CHAIN NO.	PITCH IN INCHES	LINKS PER 10 FEET	WEIGHT PER FOOT LBS.	AVERAGE ULTIMATE STRENGTH LBS.	RECOMMENDED MAXIMUM WORKING LOAD LBS.	CHAIN CONSTRUCTION
H 102	5.000	24	10.7	36,400	6,100	Riveted Only
H 104	6.000	20	8.0	36,400	6,100	Riveted Only
H 110	6.000	20	12.9	36,400	6,100	Riveted Only
H 112	8.000	15	10.8	36,400	6,100	Riveted Only
H 116	8.000	15	14.6	36,400	6,100	Riveted Only
H 120	6.000	20	18.5	49,400	8,200	Riveted Only
H 480	8.000	15	18.1	52,000	8,650	Riveted Only

MOLINE CHAIN NO.	DIMENSIONS IN DECIMAL INCHES					
	PITCH IN INCHES	MAXIMUM ALLOWABLE SPROCKET FACE A	DIAMETER OF PIN D	HEIGHT OF SIDEBAR F	OVER-ALL WIDTH N	OVER-ALL LENGTH OF BARREL X
H 102	5.000	6.38	0.625	1.50	9.75	7.75
H 104	6.000	4.12	0.625	1.50	7.50	5.31
H 110	6.000	9.00	0.625	1.50	12.50	10.62
H 112	8.000	9.00	0.625	1.50	12.50	10.62
H 116	8.000	13.00	0.625	1.62	16.38	14.44
H 120	6.000	8.75	0.750	2.00	12.88	10.19
H 480	8.000	11.12	0.750	2.00	16.00	12.69

Allied-Locke Industries Inc.

... the company that delivers

www.alliedlocke.com