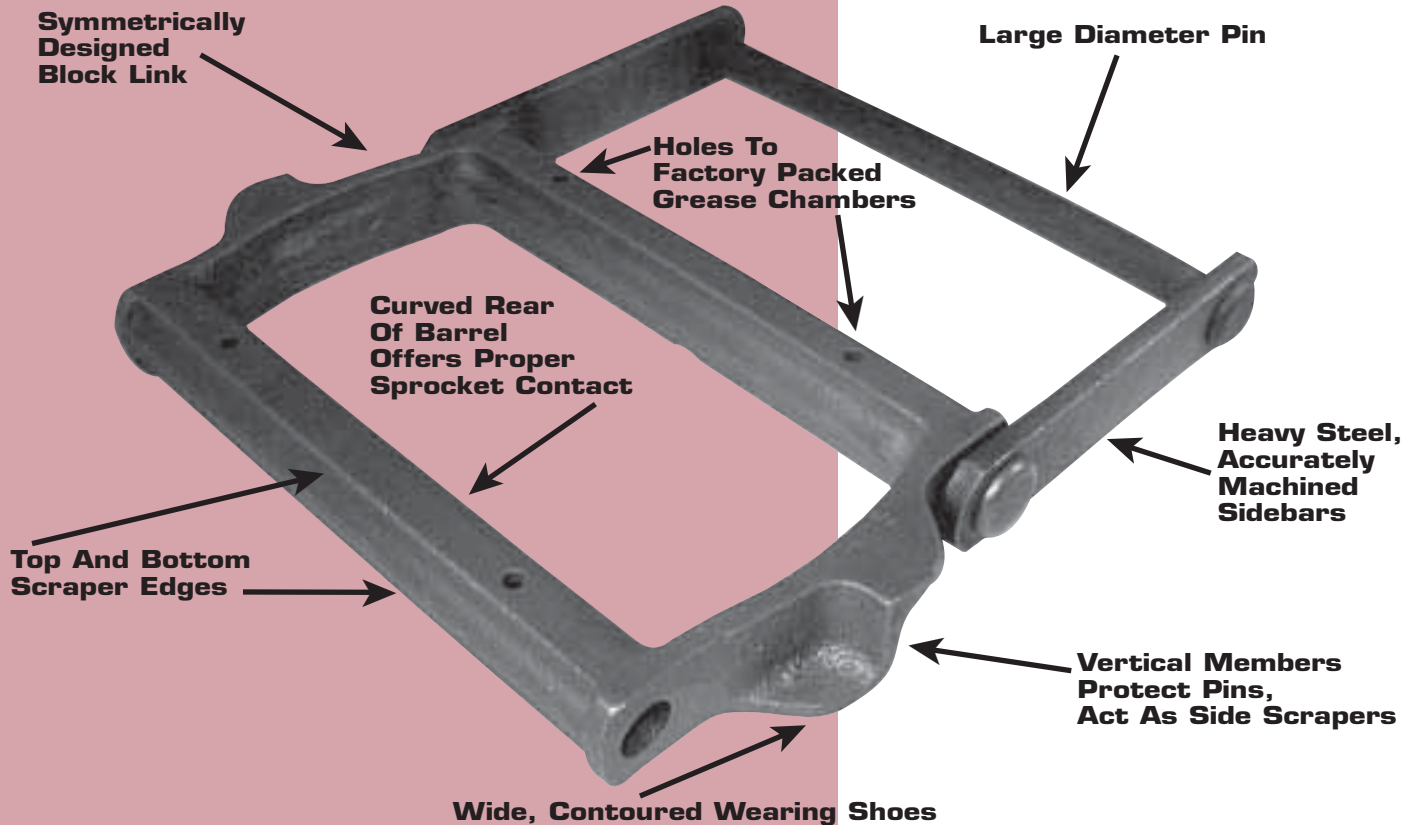


COMBINATION REFUSE DRAG CHAIN



Moline's Combination Refuse Drag Chain is designed for applications similar to Moline's "H" Class Refuse Drag Chain, but Combination Refuse Drag Chain is stronger and more adaptable to heavy-duty drag conveyor operations. The advantage of the Combination Refuse Drag Chain lies in the larger diameter pin, the higher ultimate strength and load capacity of each link, and the better bearing area between pin and link.

Combination Refuse Drag Chain is composed of alternating steel sidebars and iron block links. The block links are available in Moline Promal with a tensile strength range from 54,500 to 73,000 pounds.

The invertible symmetrical design of each Combination block link virtually doubles its working life. Heavy wearing shoes, one on each horizontal edge of the block link's sidebar, reduce chain wear on both carrying and return runs. Vertical reinforcement ribs between the shoes act as material carriers and also protect the connecting pins from damage. Both the upper and lower edges of the barrel's pushing surface have scraper edges. The dual design of scraper edges and wearing shoes makes inversion of worn chain links possible for continued service.

Grease chambers cored into the block link barrels are factory filled. This lubrication method prevents freezing of chain joints and reduces barrel wear, thereby requiring little attention.

Combination Refuse Drag Chain is available in riveted construction only.

Chain should operate in the direction of the scraper faces; barrel sides which make sprocket contact are curved for efficient sprocket operation. Brutaloy sprockets are available in both 6 and 8 inch pitch sizes.

COMBINATION REFUSE DRAG CHAIN MATERIALS

MOLINE NO.	BLOCK LINKS	PINS	SIDEBARS
6104	ALL NUMBERS	Carbon Steel, Heat Treated	ALL NUMBERS
6110	Moline Promal	Carbon Steel, Heat Treated	Carbon Steel, Heat Treated
8480		Alloy, Heat Treated	Heat Treated

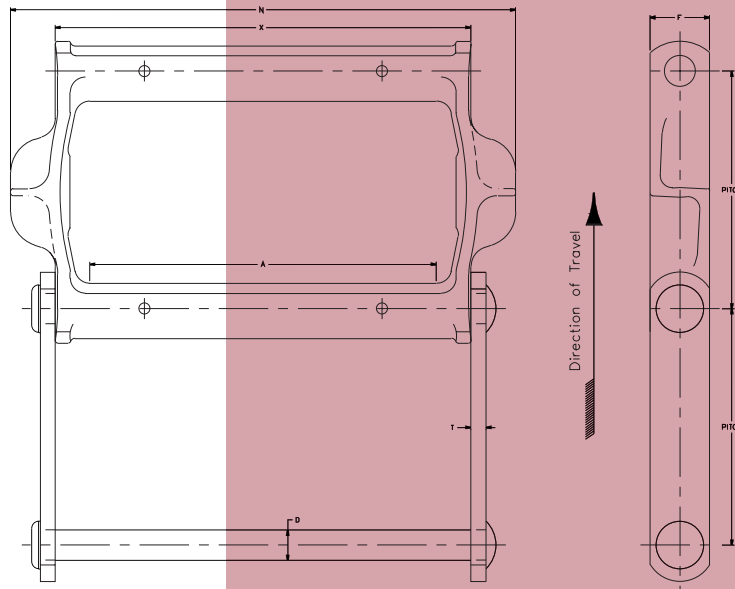
Allied-Locke Industries Inc.

... reach for the star of quality

www.alliedlocke.com



COMBINATION REFUSE DRAG CHAIN



Available in riveted construction only

COMBINATION REFUSE DRAG CHAIN MATERIALS

MOLINE CHAIN NO.	PITCH IN INCHES	LINKS PER 10 FEET	WEIGHT PER FOOT LBS.	AVERAGE ULTIMATE STRENGTH LBS.	RECOMMENDED MAXIMUM WORKING LOAD LBS.	CHAIN CONSTRUCTION
6104	6.000	20	10.0	54,500	9,000	Riveted Only
6110	6.000	20	12.2	54,500	9,000	Riveted Only
8480	8.000	15	20.6	73,000	12,000	Riveted Only

MOLINE CHAIN NO.	DIMENSIONS IN DECIMAL INCHES						
	PITCH	MAXIMUM ALLOWABLE SPROCKET FACE A	DIAMETER OF PIN D	HEIGHT OF SIDEBAR F	OVER-ALL WIDTH N	THICKNESS OF SIDEBAR T	OVER-ALL LENGTH OF BARREL X
6104	6.000	3.75	0.750	1.50	7.50	0.38	5.50
6110	6.000	9.00	0.750	1.50	12.75	0.38	10.50
8480	8.000	11.12	0.875	2.00	16.00	0.50	12.75

Allied-Locke Industries Inc.

... chain - sprockets - buckets

Toll Free:

Phone: 800-435-7752

Fax: 800-462-3130

Local:

Phone: 815-288-1471

Fax: 815-288-7945

www.alliedlocke.com