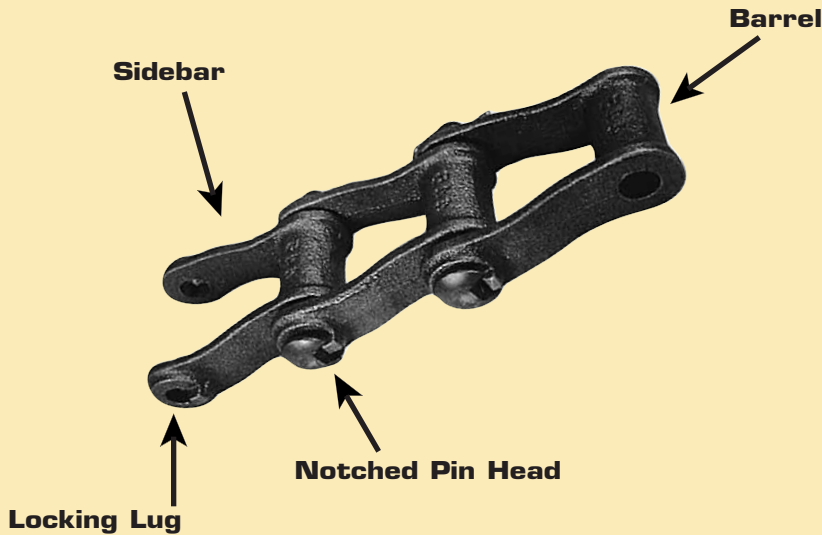


# 400 CLASS PINTLE CHAIN



Moline 400 Class Pintle Chain is a lightweight, moderately priced chain capable of handling average loads at slow or intermediate speeds. It is proportionately cast for balance, strength and long, efficient service, and is available in riveted or cottered construction. The head of each pin is notched to fit the sidebar locking lug which keeps the pin from rotating when the chain is in use. Closed bearing construction makes 400 Class Pintle Chain useful in conveying moderately gritty and abrasive materials.

Manufactured in Moline Promal, with a tensile strength range from 7,800 to 28,600 pounds, Moline 400 Class Pintle Chain is carefully cored for pitch accuracy with smooth bearing surfaces that reduce "break-in" wear causing pitch elongation.

400 Class Pintle Chain is available in a pitch range of 1.375 to 3.075 inches with a complete assortment of Brutaloy or cast steel sprockets.

A large assortment of attachments are available to handle a wide variety of applications. Styles A and G attachments are offered in right and left hand links.

As a drive chain, 400 Class Pintle is designed to travel in the direction of the barrel end of the links; as an elevating or conveying chain, its direction of travel should be toward the open ends of the links.

All Moline 400 Class Pintle Chain is manufactured according to manufacturer's standards and is completely interchangeable with other manufacturers' chain.

## 400 CLASS PINTLE CHAIN MATERIALS

MOLINE CHAIN NO.	LINKS	PINS
442	ALL NUMBERS Moline Promal	ALL NUMBERS Carbon Steel, Heat-Treated
445		
452		
455		
462		
477		
488		
4103		

## Allied-Locke Industries Inc.

... reach for the star of quality  
[www.alliedlocke.com](http://www.alliedlocke.com)

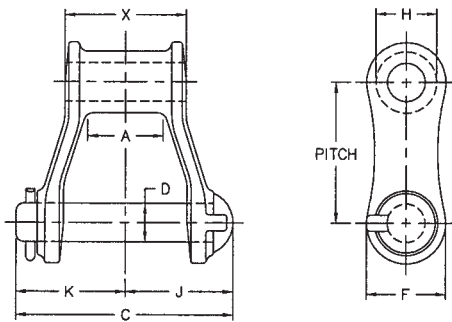
## ORDERING AND APPLICATION DATA

MOLINE CHAIN NO.	DIMENSIONS IN DECIMAL INCHES						
	PITCH IN INCHES	LINKS PER 10 FEET	WEIGHT PER FOOT LBS.	AVERAGE ULTIMATE STRENGTH LBS.	RECOMMENDED MAXIMUM WORKING LOAD LBS.	CHAIN CONSTRUCTION	AVAILABLE ATTACHMENTS
442	1.375	88	1.4	7,800	1,000	Riveted or Cottered	None
445	1.630	74	1.5	7,800	1,000	Riveted or Cottered	A1, F2, K1
452	1.506	80	2.0	9,100	1,250	Riveted or Cottered	A88, D5, E1, K1
455	1.630	74	1.9	9,490	1,260	Riveted or Cottered	D15, F2, K1
462	1.634	73	2.5	11,700	1,880	Riveted or Cottered	A12, F2, K1
477	2.308	52	2.0	12,480	1,640	Riveted or Cottered	A22, D5, F2, F16, G1, G19, K1, K2
488	2.609	46	2.9	14,300	2,130	Riveted or Cottered	F2, G19, K1, K2
4103	3.075	39	5.7	28,600	4,200	Riveted or Cottered	F2, F29, K2

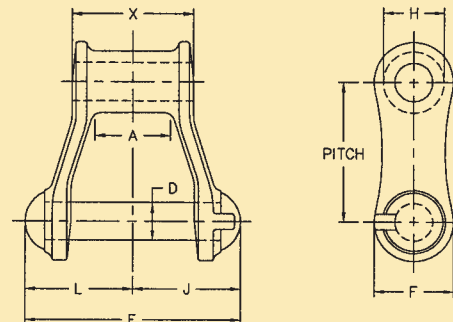


# 400 CLASS PINTLE CHAIN

**Cottered**



**Riveted**



Available in riveted and cottered construction  
Cottered furnished unless otherwise specified

MOLINE CHAIN NO.	DIMENSIONS IN DECIMAL INCHES										
	PITCH	MAXIMUM ALLOWABLE SPROCKET FACE A	OVER-ALL WIDTH— COTTERED C	DIAMETER OF PIN D	OVER-ALL WIDTH— RIVETED E	HEIGHT OF SIDEBARS F	DIAMETER OF BARREL H	HEAD OF PIN TO CENTER LINE J	END OF PIN TO CENTER LINE— COTTERED K	END OF PIN TO CENTER LINE— RIVETED L	BEARING LENGTH X
442	1.375	0.62	2.03	0.31	1.88	0.75	0.56	0.97	1.06	0.91	1.06
445	1.630	0.69	2.03	0.31	1.88	0.75	0.62	0.97	1.06	0.91	1.06
452	1.506	0.62	2.22	0.38	2.06	0.84	0.69	1.03	1.19	1.03	1.09
455	1.630	0.69	2.22	0.38	2.06	0.84	0.62	1.03	1.19	1.03	1.12
462	1.634	0.88	2.56	0.44	2.38	0.94	0.72	1.25	1.31	1.12	1.44
477	2.308	0.69	2.38	0.44	2.25	1.00	0.72	1.16	1.22	1.09	1.25
488	2.609	0.94	2.94	0.44	2.75	0.94	0.88	1.44	1.50	1.31	1.62
4103	3.075	1.12	3.56	0.75	3.25	1.50	1.25	1.75	1.81	1.50	1.88