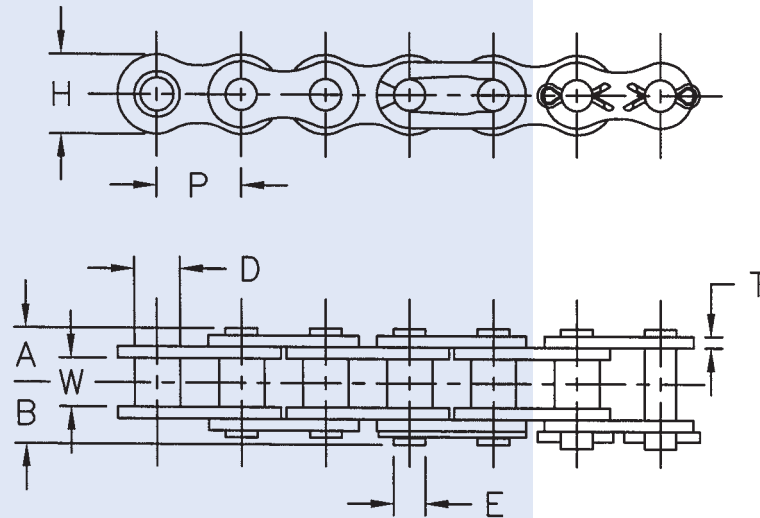


SOLID BUSHED/ SOLID ROLLER CHAIN



Dimensions In Inches

ANSI Chain No.	Pitch P	Roller		Riv. End to Center Line A	Conn. End to Center Line B	Link Plate		Pin Dia. E	Avg. Ultimate Strength Lbs.	Avg. Weight Lbs./Ft.
		Width W	Dia. D			Height H	Thickness T			
40	1/2	.312	.312	.321	.368	.475	.058	.156	3,970	0.42
50	5/8	.375	.400	.399	.455	.594	.079	.200	6,620	0.68
60	3/4	.500	.469	.497	.551	.712	.093	.234	9,270	0.97
80	1	.625	.625	.645	.724	.950	.125	.312	16,540	1.71
100	1 1/4	.750	.750	.789	.941	1.188	.157	.375	25,360	2.65
120	1 1/2	1.000	.875	.983	1.219	1.425	.189	.437	32,640	3.79
140	1 3/4	1.000	1.000	1.066	1.259	1.663	.219	.500	45,210	4.96
160	2	1.250	1.125	1.282	1.469	1.901	.255	.563	57,780	6.32
60H	3/4	.500	.469	.570	.625	.712	.125	.234	12,130	1.16
80H	1	.625	.625	.720	.783	.950	.157	.312	19,850	2.00
100H	1 1/4	.750	.750	.845	1.002	1.188	.189	.375	30,870	3.02
40-2	1/2	.312	.312	.606	.661	.475	.058	.156	7,500	0.82
50-2	5/8	.375	.400	.752	.807	.594	.079	.200	13,230	1.34
60-2	3/4	.500	.469	.945	1.000	.712	.093	.234	18,530	1.93
80-2	1	.625	.625	1.220	1.303	.950	.125	.312	33,080	3.39
C2060H	1 1/2	.500	.469	.570	.625	.712	.125	.234	12,130	0.95
C2080H	2	.625	.625	.720	.873	.950	.157	.312	19,850	1.60

Allied-Locke Industries Inc.

... the company that delivers

Toll Free:

Phone: 800-435-7752

Fax: 800-462-3130

Local:

Phone: 815-288-1471

Fax: 815-288-7945

www.alliedlocke.com