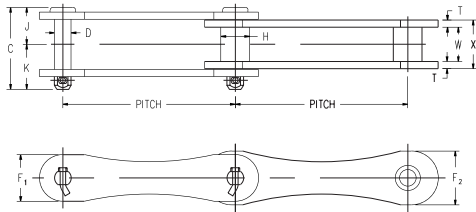


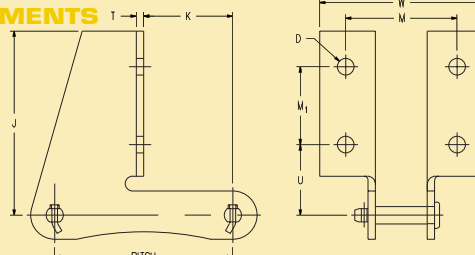


# SS715 STAINLESS STEEL CHAINS MSS78 STAINLESS STEEL CHAINS NCS720S NON-METALLIC CHAINS NH78 NON-METALLIC CHAINS AND ATTACHMENTS

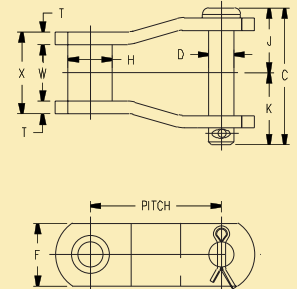
## STAINLESS STEEL CHAINS AND ATTACHMENTS



**SS-715**



**SS715-F22**

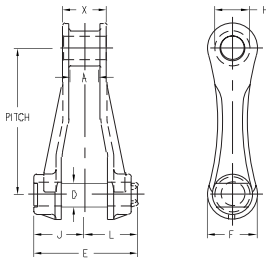


**MSS78**

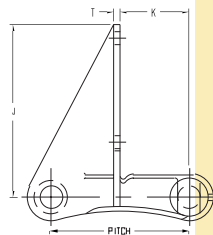
ALI Catalog No.	Pitch in Inches	Links Per 10 Feet	Weight Per Foot in Lbs.	Average Ultimate Strength in Lbs.	Over-All Width - Detachable Cottered C	Pin Dia. D	Height of Side Bar			Dia. of Bushing H	Head of Pin to Center Line J	End of Pin to Center Line - Detachable Cottered K	Thickness of Side Bar T	Distance Between Side Bars W	Over-All Length of Bushing X
							F	F <sub>1</sub>	F <sub>2</sub>						
SS715	6.00	20	3.9	33,000	2.82	.562	—	1.88	1.62	1.00	1.32	1.50	.25	1.19	1.69
MSS78	2.609	46	4.2	24,000	2.70	.500	1.25	—	—	.88	1.28	1.42	.25	1.19	1.62

ALI Attachment No.	Pitch in Inches	D		J	K	M	M <sub>1</sub>	T	U	W	Weight Each Lbs.
		Bolt Diameter	Hole Diameter								
SS715-F226	6.0	0.38	0.44	6.21	3.00	3.75	2.62	0.31	2.38	5.50	4.5
SS715-F228	6.0	0.38	0.44	7.88	3.00	3.75	4.50	0.31	2.38	5.50	5.4

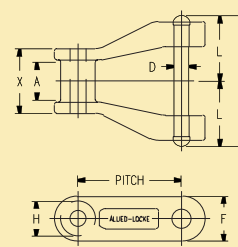
## NON-METALLIC CHAINS AND ATTACHMENTS



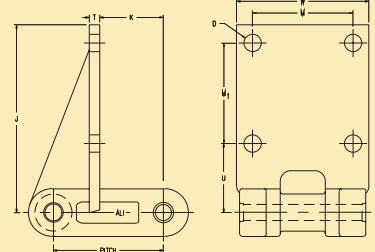
**NCS720S**



**NCS720S-F22**



**NH78**



**NH78-F2**

ALI Catalog No.	Pitch in Inches	Links Per 10 Feet	Weight Per Foot in Lbs.	Average Ultimate Strength in Lbs.	Maximum Allowable Sprocket Face A	Over-All Width Detachable Cottered C	Pin Dia. D	Over-All Width Fixed Riveted E	Height of Side Bar F	Dia. of Barrel H	Head of Pin to Center Line J	End of Pin to Center Line Detachable Cottered K	End of Pin to Center Line Fixed Riveted L	Bearing Length X
NH78	2.609	46	1.5	3,100	.94	—	.38	3.19	1.12	.88	—	—	1.59	1.62

ALI Attachment No.	Pitch in Inches	D		J	K	M	M <sub>1</sub>	T	U	W
		Bolt Diameter	Hole Diameter							
NCS720S-F226	6.000	0.50	0.56	6.14	3.00	3.75	2.62	0.25	2.38	5.50
NCS720S-F228	6.000	0.50	0.56	7.50	3.00	3.75	4.50	0.25	2.38	5.50

ALI Attachment No.	Pitch in Inches	D		J	K	M	M <sub>1</sub>	T	U	W
		Bolt Diameter	Hole Diameter							
NH78-F2	2.609	0.38	0.41	4.44	1.50	2.38	2.38	0.25	1.62	3.12