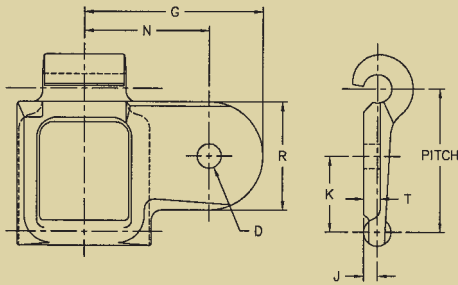


# DETACHABLE CHAIN ATTACHMENTS



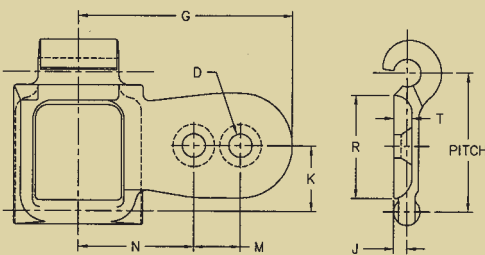
## A1 ATTACHMENT



NOTE: "R" and "L" suffixes in Moline Attachment Nos. designate right hand and left hand attachments

MOLINE ATTACHMENT NO.	DIMENSIONS IN DECIMAL INCHES									AVERAGE WEIGHT PER 10 FOOT LBS.
	PITCH	D		G	J	K	N	R	T	
		BOLT DIAMETER	HOLE DIAMETER							
25-A1-R	0.902	0.19	0.22	1.22	0.09	0.44	0.88	0.72	0.09	3.9
25-A1-L	0.902	0.19	0.22	1.22	0.09	0.44	0.88	0.72	0.09	3.9
32-A1-R	1.154	0.19	0.22	1.22	0.09	0.62	0.88	0.72	0.12	5.0
32-A1-L	1.154	0.19	0.22	1.22	0.09	0.62	0.88	0.72	0.12	5.0
42-A1-R	1.375	0.25	0.28	1.56	0.09	0.66	1.09	1.03	0.12	7.0
42-A1-L	1.375	0.25	0.28	1.56	0.09	0.66	1.09	1.03	0.12	7.0
45-A1-R	1.630	0.25	0.28	1.66	0.88	0.81	1.12	1.12	0.16	7.5
45-A1-L	1.630	0.25	0.28	1.66	0.88	0.81	1.12	1.12	0.16	7.5
52-A1-R	1.506	0.25	0.28	1.62	0.12	0.78	1.19	1.06	0.12	11.0
52-A1-L	1.506	0.25	0.28	1.62	0.12	0.78	1.19	1.06	0.12	11.0
55-A1-R	1.631	0.25	0.28	1.69	0.12	0.88	1.12	1.16	0.16	9.0
55-A1-L	1.631	0.25	0.28	1.69	0.12	0.88	1.12	1.16	0.16	9.0
57-A1-R	2.308	0.25	0.28	2.38	0.19	1.12	1.50	1.72	0.19	13.0
57-A1-L	2.308	0.25	0.28	2.38	0.19	1.12	1.50	1.72	0.19	13.0
62-A1-R	1.654	0.25	0.28	2.03	0.16	0.84	1.44	1.25	0.19	15.0
62-A1-L	1.654	0.25	0.28	2.03	0.16	0.84	1.44	1.25	0.19	15.0
77-A1-R	2.297	0.25	0.28	2.44	0.19	1.25	1.56	1.59	0.22	18.0
77-A1-L	2.297	0.25	0.28	2.44	0.19	1.25	1.56	1.59	0.22	18.0

## A12 ATTACHMENT



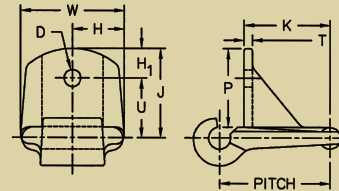
NOTE: "R" and "L" suffixes in Moline Attachment Nos. designate right hand and left hand attachments

MOLINE ATTACHMENT NO.	DIMENSIONS IN DECIMAL INCHES										AVERAGE WEIGHT PER 10 FOOT LBS.
	PITCH	D		G	J	K	M	N	R	T	
		BOLT DIAMETER	HOLE DIAMETER								
62-A12-R	1.654	0.25	0.28	2.56	0.16	0.84	0.56	1.38	1.25	0.22	18.0
62-A12-L	1.654	0.25	0.28	2.56	0.16	0.84	0.56	1.38	1.25	0.22	18.0



# DETACHABLE CHAIN ATTACHMENTS

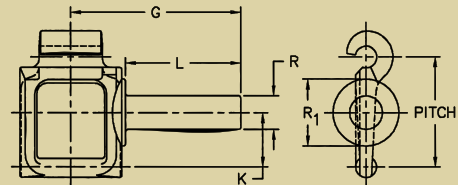
## C1 ATTACHMENT



MOLINE ATTACHMENT NO.	DIMENSIONS IN DECIMAL INCHES										AVERAGE WEIGHT PER 10 FOOT-LBS.
	PITCH	D		H	H <sub>1</sub>	J	K	P	U	W	
		BOLT DIAMETER	HOLE DIAMETER								
55-C1	1.631	0.25	0.28	0.59	0.50	1.12	1.34	0.94	0.69	1.19	12.2

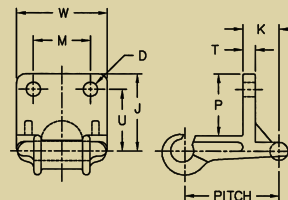
NOTE: "R" and "L" suffixes in Moline Attachment Nos. designate right hand and left hand attachments

## D5 ATTACHMENT



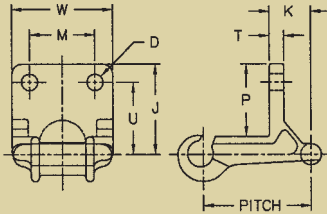
MOLINE ATTACHMENT NO.	DIMENSIONS IN DECIMAL INCHES						AVERAGE WEIGHT PER 10 FOOT-LBS.
	PITCH	G	K	L	R	R <sub>1</sub>	
52-D5-R	1.506	2.47	0.75	1.62	0.56	0.94	21.0
52-D5-L	1.506	2.47	0.75	1.62	0.56	0.94	21.0
55-D5-R	1.631	2.19	0.81	1.31	0.44	0.94	14.0
55-D5-L	1.631	2.19	0.81	1.31	0.44	0.94	14.0
62-D5-R	1.654	2.62	0.81	1.75	0.50	1.00	20.0
62-D5-L	1.654	2.62	0.81	1.75	0.50	1.00	20.0
75-D5-R	2.609	2.69	1.19	1.44	0.88	1.75	25.0
75-D5-L	2.609	2.69	1.19	1.44	0.88	1.75	25.0
77-D5	2.297	2.69	1.12	1.50	0.50	1.19	22.0

## F2 ATTACHMENT



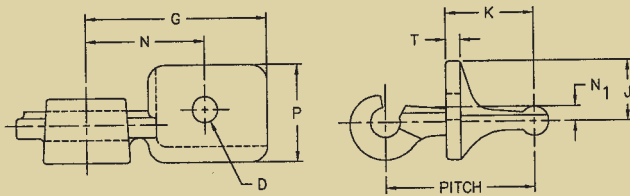
MOLINE ATTACHMENT NO.	DIMENSIONS IN DECIMAL INCHES										AVERAGE WEIGHT PER 10 FOOT-LBS.
	PITCH	D		J	K	M	P	T	U	W	
		BOLT DIAMETER	HOLE DIAMETER								
55-F2	1.631	0.19	0.22	1.31	0.69	1.06	1.03	0.16	0.91	1.56	13.0
77-F2	2.297	0.31	0.34	1.94	1.19	1.75	1.50	0.25	1.38	2.53	31.0
88-F2	2.609	0.31	0.34	2.00	1.25	2.00	1.50	0.25	1.38	2.72	42.0
103-F2	3.075	0.38	0.41	2.47	1.31	2.12	1.91	0.28	1.81	3.00	63.0

# DETACHABLE CHAIN ATTACHMENTS



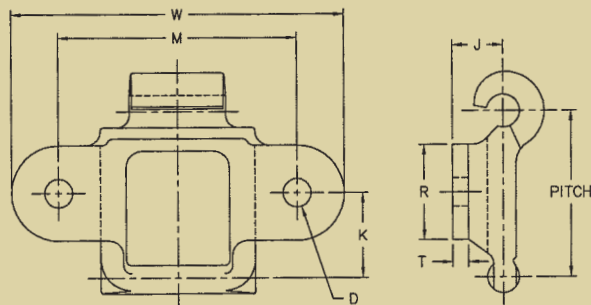
MOLINE ATTACHMENT NO.	DIMENSIONS IN DECIMAL INCHES										AVERAGE WEIGHT PER 10 FOOT-LBS.
	PITCH	D		J	K	M	P	T	U	W	
		BOLT DIAMETER	HOLE DIAMETER								
103-F8	3.075	0.38	0.41	2.62	2.34	2.12	2.06	0.44	2.00	3.00	68.3
124-F8	4.063	0.50	0.56	2.88	2.44	2.50	2.22	0.53	2.09	3.94	116.4

## G27 ATTACHMENT



MOLINE ATTACHMENT NO.	DIMENSIONS IN DECIMAL INCHES										AVERAGE WEIGHT PER 10 FOOT-LBS.
	PITCH	D		G	J	K	N	N <sub>1</sub>	P	T	
		BOLT DIAMETER	HOLE DIAMETER								
55-G27-R	1.631	0.25	0.28	2.00	0.94	1.00	1.31	0.38	1.06	0.16	12.0
55-G27-L	1.631	0.25	0.28	2.00	0.94	1.00	1.31	0.38	1.06	0.16	12.0

## K1 ATTACHMENT



MOLINE ATTACHMENT NO.	DIMENSIONS IN DECIMAL INCHES									AVERAGE WEIGHT PER FOOT LBS.
	PITCH	D		J	K	M	R	T	W	
		BOLT DIAMETER	HOLE DIAMETER							
32-K1	1.154	0.19	0.22	0.38	0.59	1.75	0.59	0.09	2.31	7.9
42-K1	1.375	0.19	0.22	0.38	0.69	2.00	0.75	0.12	2.69	12.2
45-K1	1.630	0.19	0.22	0.41	0.78	2.00	0.84	0.12	2.69	8.9
51-K1	1.155	0.19	0.22	0.44	0.62	1.75	0.62	0.12	2.06	11.4
52-K1	1.506	0.19	0.22	0.44	0.72	2.38	0.88	0.12	2.81	13.0
55-K1	1.631	0.19	0.22	0.41	0.78	2.00	0.88	0.12	2.62	11.0
62-K1	1.654	0.25	0.28	0.47	0.84	2.38	0.94	0.16	3.31	19.0
77-K1	2.297	0.25	0.28	0.66	1.12	3.00	1.28	0.16	3.88	31.0
78-K1	2.609	0.25	0.28	0.62	1.25	3.38	1.38	0.16	3.84	25.0
88-K1	2.609	0.31	0.34	0.75	1.25	3.81	1.38	0.19	4.25	33.0

**Allied-Locke Industries Inc.**  
... reach for the star of quality  
[www.alliedlocke.com](http://www.alliedlocke.com)