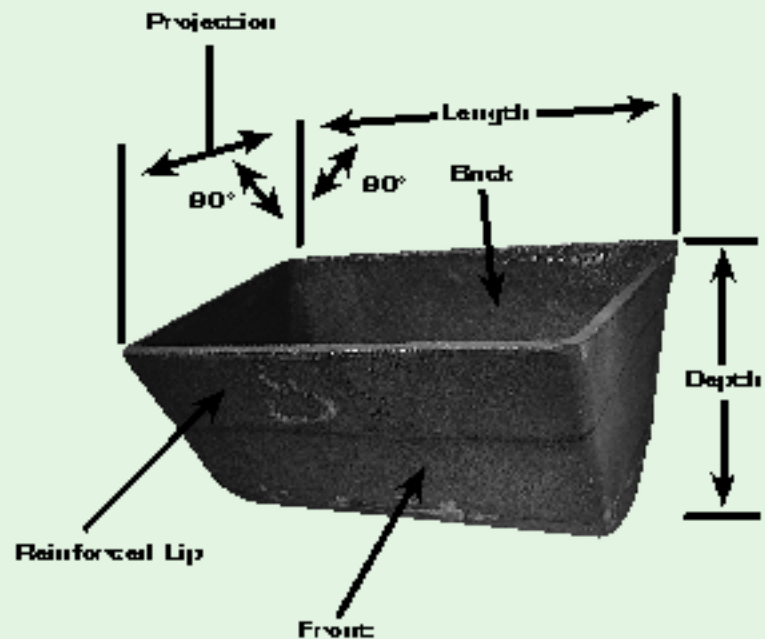




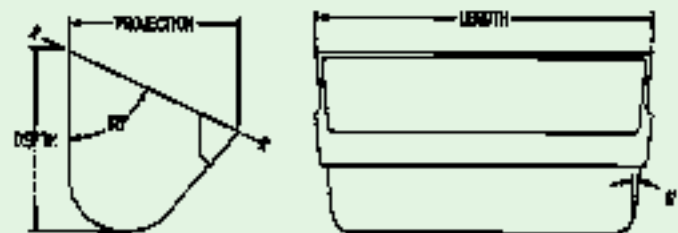
STYLE "MD" ELEVATOR BUCKETS for general purpose elevators

Rugged construction Moline Style "MD" Buckets are most popular for general purpose elevators. Covering a wide range of sizes from 4 to 20 inches long, they are used for fine and medium size materials such as coal, cement, pulp, grain, ear corn, etc. They are widely used for heavy abrasive materials such as sand, gravel, and stone. Reinforced front lips give Moline Style "MD" Buckets a long wearing digging edge. Uniform wall thickness and strong corner reinforcement make them stronger than steel buckets of the same gauge. They are smoothly surfaced and have ends sloped inward at 6 degree angles to insure proper filling and clean discharge. Available in Moline Malleable and Moline Promal.

Chain for which buckets are available include: Steel Bushed Roller, Steel Bushed, Combination, "H" Class Mill, 400 Class Pintle, and 700 Class Pintle. "MD" Buckets are used with G1, G6, K1, or K2 style attachments when they are available in the chain type.



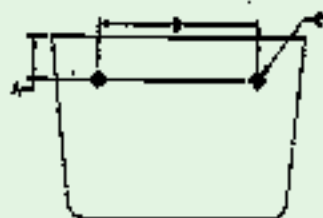
Capacities are for buckets filled to the line XX (see diagram). The practical operating capacity will vary with the loading conditions, angle of repose of the material being handled, and the inclination of the elevator.



ORDERING AND APPLICATION DATA

MOLINE BUCKET NO.	DIMENSIONS IN DECIMAL INCHES			CAPACITY IN CUBIC FEET	MAXIMUM LUMP SIZE (Diameter) WHEN % OF LUMP IS:			WEIGHT LBS.
	LENGTH	PROJECTION	DEPTH		UNDER 10%	10 TO 75%	75% & OVER	
4x3-MD	4	2.75	3	.01	1.75	1	1.5	1.5
6x4-MD	6	4	4.25	.03	2.5	2	2	4.0
8x5-MD	8	5	5.5	.07	3	2.5	1.25	7.2
10x6-MD	10	6	6.25	.12	3.5	3	1.5	9.3
12x6-MD	12	6	6.25	.14	3.5	3	1.5	11.0
12x7-MD	12	7	7.25	.19	4	3.5	1.75	13.6
14x7-MD	14	7	7.25	.23	4	3.5	1.75	15.0
14x8-MD	14	8	8.25	.30	4.5	4	2	22.9
16x7-MD	16	7	7.25	.27	4	3.5	1.75	20.3
16x8-MD	16	8	8.5	.34	4.5	4	2	24.0
18x8-MD	18	8	8.5	.39	4.5	4	2	29.8
18x10-MD	18	10	10.5	.61	5	4.5	2.25	43.5

STYLE "MD" ELEVATOR BUCKETS for general purpose elevators



"MD" STYLE BUCKETS FOR K1 ATTACHMENTS

*K1 Attachment:
SS Class
Bushed Steel Chain

*K1 Attachment:
MSR Class
Bushed Roller
Steel Chain

*K1 Attachment:
Combination Chain

*[center hole only]

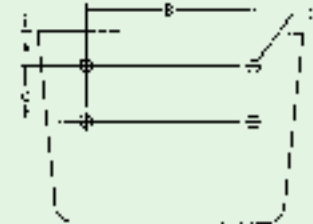
MOLINE BUCKETS FOR THESE K1 ATTACHMENTS	BUCKET CATALOG NUMBERS (With Nominal Bucket Dimensions in Inches)						BUCKET PUNCHING DIMENSIONS IN INCHES		
	43-MD (4X3)	64-MD (6X4)	85-MD (8X5)	106-MD (10X6)	126-MD (12X6)	127-MD (12X7)	A	B	D BOLT DIAM.
"MD" STYLE BUCKETS FOR MSR CLASS BUSHED ROLLER STEEL CHAIN									
MSR 3013-K1		X	X	X			1.00	2.94	0.31
MSR 4013-K1		X	X	X			1.00	2.75	0.38
"MD" STYLE BUCKETS FOR SS CLASS BUSHED STEEL CHAIN									
SS 188-K1		X	X	X	X		1.00	3.75	0.38
"MD" STYLE BUCKETS FOR COMBINATION CHAIN									
C 95-K1	X	X					0.90	2.00	0.25
C 77-K1		X	X	X			1.00	3.00	0.38
C 188-K1		X	X	X	X		1.00	3.75	0.38
"MD" STYLE BUCKETS FOR "H" CLASS MILL CHAIN									
H 60-K1		X	X	X			0.75	3.00	0.31
H 78-K1		X	X	X	X		1.00	4.00	0.38
"MD" STYLE BUCKETS FOR 400 CLASS FINTLE CHAIN									
445-K1	X	X					0.62	2.06	0.19
462-K1	X	X					0.75	2.06	0.19
495-K1	X	X					0.75	2.06	0.19
402-K1		X	X				0.75	2.38	0.25
477-K1		X	X	X			1.00	3.00	0.25
488-K1		X	X	X	X		1.00	3.81	0.25
"MD" STYLE BUCKETS FOR DETACHABLE CHAIN									
55-K1	X	X					0.90	2.00	0.19
57-K1		X	X	X			0.90	3.00	0.25
77-K1		X	X	X			1.00	3.00	0.25
78-K1		X	X	X	X		0.75	3.38	0.25
88-K1		X	X	X	X		0.75	3.81	0.31



STYLE "MD" ELEVATOR BUCKETS for general purpose elevators

'MD' STYLE BUCKETS FOR K2 ATTACHMENTS

**K2 Attachment
Combination Chain
(outer holes only)**



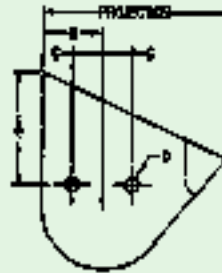
MACHINE BUCKETS FOR THESE K2 ATTACHMENTS	BUCKET CATALOG NUMBERS (With Nominal Bucket Dimensions in inches)											BUCKET PUNCHING DIMENSIONS IN INCHES				
	64-MD (6X4)	85-MD (8X5)	108-MD (10X8)	128-MD (12X8)	127-MD (12X7)	147-MD (14X7)	148-MD (14X8)	167-MD (16X7)	168-MD (16X8)	188-MD (18X8)	1810-MD (18X10)	A	B	C	D BOLT DIAM.	HOLE DIAM.
"MD" STYLE BUCKETS FOR MSR CLASS BUSHED ROLLER STEEL CHAIN																
MSR 90-K2			X	X	X	X	X					1.38	4.38	3.00	0.60	0.66
MSR 1110-K2	X	X	X	X	X							0.62	4.00	2.00	0.38	0.44
MSR 6018-K2	X	X	X	X								0.62	4.00	2.00	0.38	0.44
"MD" STYLE BUCKETS FOR SS CLASS BUSHED STEEL CHAIN																
SS 102B-K2		X	X	X	X	X	X	X				0.75	5.31	1.75	0.38	0.44
SS 110-K2		X	X	X	X	X	X	X	X			0.88	5.31	1.75	0.38	0.44
SS 111-K2			X	X	X	X	X	X	X	X		0.75	6.25	2.31	0.60	0.66
SS 131-K2		X	X	X								1.00	4.12	1.90	0.60	0.66
SS 160-K2			X	X	X	X	X	X	X	X	X	1.00	7.90	2.75	0.60	0.66
SS 188-K2		X	X	X	X	X	X	X	X			0.75	4.19	1.25	0.31	0.38
SS 896-K2			X	X	X	X	X	X	X	X	X	1.00	6.31	2.25	0.60	0.66
"MD" STYLE BUCKETS FOR COMBINATION CHAIN																
C 102B-K2		X	X	X	X	X	X	X				0.75	5.31	1.75	0.38	0.44
C 102 1/2-K2		X	X	X	X	X	X	X				0.75	5.31	1.75	0.38	0.44
C 110-K2		X	X	X	X	X	X	X	X			0.88	5.31	1.75	0.38	0.44
C 111-K2			X	X	X	X	X	X	X	X		0.75	6.25	2.31	0.60*	0.66
C 111C-K2			X	X	X	X	X	X	X	X		0.75	6.25	2.31	0.60*	0.66
C 131-K2			X	X	X							1.00	4.12	1.90	0.60	0.66
C 132-K2			X	X	X	X	X	X	X	X	X	1.00	7.90	2.75	0.60	0.66
C 188-K2		X	X	X	X	X	X	X	X			0.75	4.19	1.25	0.31	0.38
"MD" STYLE BUCKETS FOR "H" CLASS MILL CHAIN																
H78-K2	X	X	X	X								0.62	4.00	1.12	0.38	0.44
H82-K2		X	X	X	X	X						0.75	4.25	1.31	0.38	0.44
H 124-K2		X	X	X	X	X	X	X				0.88	5.25	1.94	0.38	0.44
"MD" STYLE BUCKETS FOR 400 CLASS FINTLE																
477-K2	X	X	X									0.75	3.00	0.81	0.25	0.31
488-K2	X	X	X	X								0.75	3.02	1.25	0.31	0.38
4103-K2		X	X	X								1.00	4.12	1.90	0.60	0.66
"MD" STYLE BUCKETS FOR 700 CLASS FINTLE CHAIN																
720-K2			X	X	X	X	X	X	X	X	X	1.00	6.00	2.02	0.60	0.66
730-K2			X	X	X	X	X	X	X	X	X	1.00	6.00	2.02	0.60	0.66
"MD" STYLE BUCKETS FOR DETACHABLE CHAIN																
95-K2		X	X	X	X	X	X	X	X			0.75	5.19	1.75	0.38	0.44
103-K2		X	X	X								0.75	4.12	1.90	0.60	0.66
108-K2			X	X	X	X	X	X	X	X		0.75	6.25	2.31	0.38	0.44
124-K2		X	X	X	X	X	X	X	X			0.88	5.25	1.94	0.38	0.44

*0.5" is ANSI standard; can also be finished for 0.38" & 0.44" bolts when specified.

STYLE "MD" ELEVATOR BUCKETS for general purpose elevators



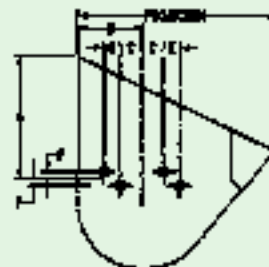
"MD" STYLE
BUCKETS FOR
G1 ATTACHMENTS



G1 Attachment:
400 Class Pintle

MACHINE BUCKETS FOR THIS G1 ATTACHMENT	BUCKET CATALOG NUMBERS (With Nominal Bucket Dimensions in Inches)							
	106-MD (10x6)		127-MD (12x7) 147-MD (14x7) 167-MD (16x7)		148-MD (14x8) 168-MD (16x8) 188-MD (18x8)			
	BUCKET PROJECTIONS							
	6 inches		7 inches		8 inches			
	BUCKET PUNCHING — DIMENSIONS IN INCHES							
	A	B	A	B	A	B	C	D BOLT DIAM.
3.12	2.62	3.75	2.90	4.88	2.62			
"MD" STYLE BUCKETS FOR 400 CLASS PINTLE								
477-G1	X		X		X	1.31	0.31	

MACHINE BUCKETS FOR THESE G6 ATTACHMENTS	BUCKET CATALOG NUMBERS (With Nominal Bucket Dimensions in Inches)								
	106-MD (10x6)		127-MD (12x7) 147-MD (14x7) 167-MD (16x7)		148-MD (14x8) 168-MD (16x8) 188-MD (18x8)				
	BUCKET PROJECTIONS								
	6 inches		7 inches		8 inches				
	BUCKET PUNCHING — DIMENSIONS IN INCHES								
	A	B	A	B	A	B	C	D BOLT DIAM.	E
3.12	2.62	3.75	2.50	4.88	2.62				
"MD" STYLE BUCKETS FOR COMBINATION CHAIN									
C131-G6	X		X		X	0.88	0.38	0.60	0.28
C188-G6	X		X		X	0.88	0.25	0.60	0.28



"MD" STYLE
BUCKETS FOR
G6 ATTACHMENTS

G6 Attachment:
Combination Chain