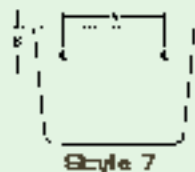


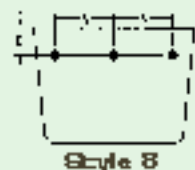
STYLE "MD" BUCKETS FOR BELT ELEVATORS



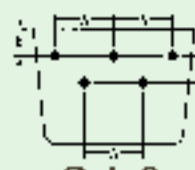
Style "MD"



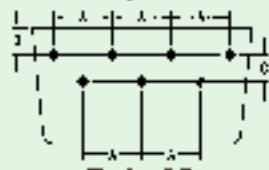
Style 7



Style 8



Style 9



Style 10



Style 11

Allied-Locke Industries Inc.
... the company that delivers

Toll Free:
Phone: 800-435-7752
Fax: 800-462-3130

Local:
Phone: 815-288-1471
Fax: 815-288-7945

www.alliedlocke.com

BUCKET PUNCHING FOR BELT ELEVATORS

Moline Buckets may be adapted for belt elevator applications as well as for chain elevators. Punchings for belt applications are in accordance with manufacturers' standards. The five punching styles offered by Moline are illustrated in the following diagrams and punching dimensions appear under appropriate style headings in the punching table.

The following application guidelines may apply to determine width of belts, length of bolts, and diameter of bolts and washers.

1. Width of Belt
Bucket length + 1" for buckets up to 16" long;
Bucket length + 2" for buckets 16" long and over.
2. Length of Bolt
4-ply belts take 0.75" bolt length;
5 and 6-ply belts take 1.00" bolt length;
8-ply belts take 1.25" bolt length.
3. Bolt and Washer Diameters:
Use 0.25" bolts and 0.25" leather washers for up to 10" bucket length;
Use 0.31" bolts and 0.31" leather washers for 10" bucket length and up.

The punching dimensions below are manufacturers' standards and APPLY TO PUNCHING STYLES LISTED IN THE AVAILABLE BUCKET LENGTHS:

BUCKET LENGTH	A	B	C
PUNCHING STYLE 7 IN INCHES			
3	1.38	0.75	—
4	2.31	0.75	—
5	3.19	1.00	—
6	4.38	1.00	—
PUNCHING STYLE 8 IN INCHES			
7	2.50	1.00	—
PUNCHING STYLE 9 IN INCHES			
8	3.00	0.88	1.00
9	3.00	0.88	1.00
10	3.50	0.88	1.00
11	4.00	0.88	1.00
12	4.50	0.88	1.00
PUNCHING STYLE 10 IN INCHES			
13	3.50	0.88	1.00
14	4.00	0.88	1.00
15	4.00	0.88	1.00
16	4.50	0.88	1.00
17	4.50	0.88	1.00
18	5.00	0.88	1.00
PUNCHING STYLE 11 IN INCHES			
19	4.00	0.88	1.00
20	4.00	0.88	1.00
21	4.50	0.88	1.00
22	4.50	0.88	1.00
23	5.00	0.88	1.00
24	5.00	0.88	1.00