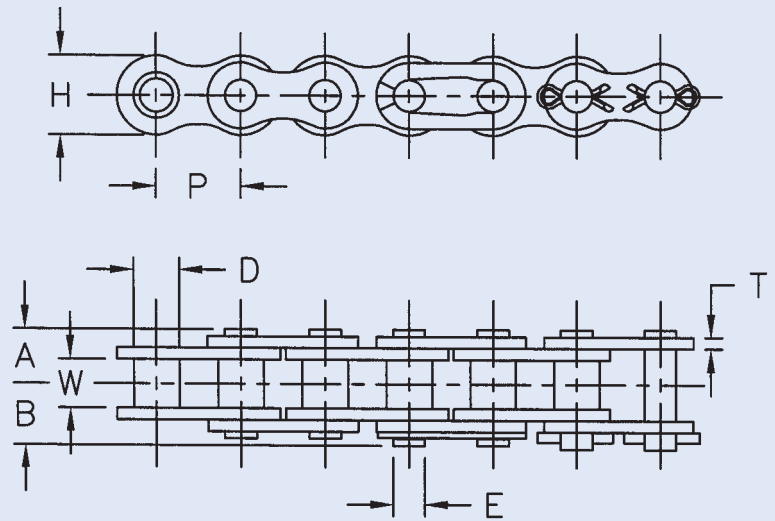




"304" STAINLESS STEEL CHAIN

Stainless roller chain is made of 304 stainless steel having superior corrosion and heat resistance properties. Stainless steel attachment chain is also available.



ANSI Chain No.	Dimensions In Inches									
	Pitch P	Roller		Riv. End to Center Line A	Conn. End to Center Line B	Link Plate		Pin Dia. E	Avg. Ultimate Strength Lbs.	Avg. Weight Lbs./Ft.
		Width W	Dia. D			Height H	Thickness T			
25 SS	1/4	.125	.130	.153	.189	.228	.029	.091	670	0.09
35 SS	3/8	.187	.200	.228	.276	.356	.050	.141	1,550	0.22
40 SS	1/2	.312	.312	.321	.368	.475	.058	.156	2,760	0.42
41 SS	1/2	.250	.306	.261	.314	.390	.050	.141	1,550	0.28
50 SS	5/8	.375	.400	.399	.455	.594	.079	.200	4,970	0.68
60 SS	3/4	.500	.469	.497	.551	.712	.093	.234	6,620	0.97
80 SS	1	.625	.625	.645	.724	.950	.125	.312	10,590	1.71
100 SS	1 1/4	.750	.750	.789	.941	1.188	.157	.375	18,500	2.80
35-2 SS	3/8	.187	.200	.438	.468	.356	.050	.141	3,400	0.44
40-2 SS	1/2	.312	.312	.606	.661	.475	.058	.156	6,000	0.84
50-2 SS	5/8	.375	.400	.752	.807	.594	.079	.200	9,390	1.40
60-2 SS	3/4	.500	.469	.945	1.000	.712	.093	.234	13,540	2.10
80-2 SS	1	.625	.625	1.220	1.303	.950	.125	.312	24,030	3.40
A2040 SS	1	.312	.312	.321	.368	.475	.058	.156	2,760	0.32
A2050 SS	1 1/4	.375	.400	.399	.455	.594	.079	.200	4,970	0.54
A2060 SS	1 1/2	.500	.469	.497	.551	.712	.093	.234	6,620	0.76
C2040 SS	1	.312	.312	.321	.368	.475	.058	.156	2,760	0.32
C2042 SS	1	.312	.625	.321	.368	.475	.058	.156	3,970	0.56
C2050 SS	1 1/4	.375	.400	.399	.455	.594	.079	.200	4,970	0.54
C2052 SS	1 1/4	.375	.750	.399	.455	.594	.079	.200	4,970	0.85
C2060 SS	1 1/2	.500	.469	.497	.551	.712	.093	.234	6,620	0.76
C2060H SS	1 1/2	.500	.469	.570	.625	.712	.125	.234	6,620	0.95
C2062H SS	1 1/2	.500	.875	.570	.625	.712	.125	.234	6,620	1.42
C2080H SS	2	.625	.625	.720	.873	.950	.157	.312	10,590	1.60
C2082H SS	2	.625	1.130	.720	.873	.950	.157	.312	10,590	2.31

Allied-Locke Industries Inc.

... the company that delivers
www.alliedlocke.com