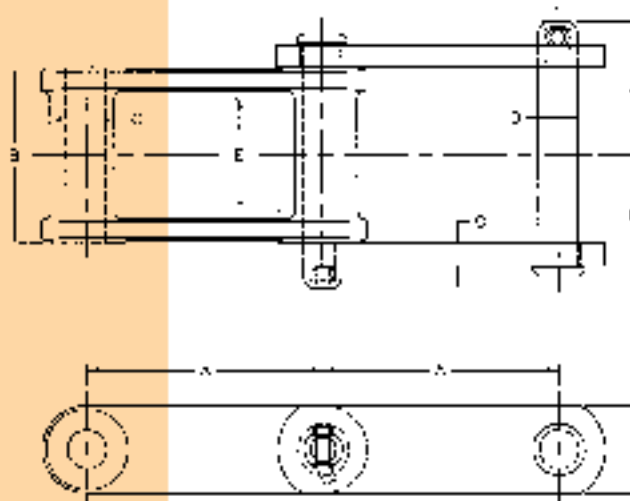


CAST ALLOY COMBINATION CHAIN



Allied-Locke Combination Chain is used extensively in the coal, paper and cement industries although its basic design does not limit its use to those industries. It offers side bars which in many cases provide much more pin bearing area than is found with standard design chains. The greater pin bearing area results in greater service life for pins and side bars and the T-Head pins can be reversed to further increase pin life. A full line of attachment links are available for use with Combination Chain in a variety of applications including bucket elevators, log jack ladders and scraper conveyors. These attachments are described on the pages immediately following.



**ASSEMBLY WITH STEEL SIDE BARS
(Suffix S)**

CHAIN NO.	PITCH IN INCHES A	AVER. WEIGHT IN LBS.			DIMENSIONS IN INCHES										
		PLAIN CHAIN PER FOOT	CENTER LINK WITH PIN	SIDE BARS WITH PIN PER PAIR	AVER. ULTIMATE STRENGTH IN LBS.	RECOM. WORKING LOAD IN LBS.	PIN STYLE NO.	CENTER LINK			SIDE BAR				
								BARREL LENGTH B	BARREL DIA. C	PIN DIA. D	MAX. SPERT. WIDTH E	SIDE BAR WIDTH F	SIDE BAR THICKN. G	PIN HEAD TO ϕ H	PIN END TO ϕ J
C102BS	4.000	7.6	2.5	2.5	49,800	5,000	2	2 ¹³ / ₁₆	3 ¹ / ₃₂	5/8	1 ⁷ / ₈	1 ¹ / ₂	3/8	2 ¹⁵ / ₁₆ ±4	2 ²⁵ / ₁₆ ±4
C102 ¹ / ₂ S	4.028	9.7	4.0	2.5	41,000	6,700	1	3	1 ³ / ₈	3/4	2	1 ³ / ₄	3/8	2 ¹ / ₈	2 ¹ / ₈
C110S	6.000	6.5	3.7	2.8	98,300	5,000	2	2 ¹³ / ₁₆	1 ¹ / ₄	5/8	2	1 ¹ / ₂	3/8	2 ¹ / ₄	2 ³ / ₈
C111S	4.760	10.1	4.8	3.2	48,600	7,500	2	3 ³ / ₈	1 ⁷ / ₁₆	3/4	2 ⁵ / ₁₆	1 ³ / ₄	3/8	2 ⁵ / ₁₆	2 ¹ / ₁₆
C131S	3.075	7.8	2.0	2.0	36,800	3,800	1	2	1 ¹ / ₄	5/8	1 ¹ / ₄	1 ¹ / ₂	3/8	1 ⁵ / ₈	1 ⁹ / ₁₆
C132S	6.050	15.0	3.0	6.0	57,100	10,500	1	4 ³ / ₈	1 ³ / ₄	1	3	2	1/2	3	2 ¹⁵ / ₁₆
C188S	2.609	4.2	1.0	.8	26,000	2,400	2	1 ⁵ / ₈	1 ⁵ / ₁₆	1/2	1 ⁷ / ₈	1 ¹ / ₄	1/4	1 ⁵ / ₁₆	1 ⁷ / ₁₆

Allied-Locke Industries Inc.
... the company that delivers

Toll Free:
Phone: 800-435-7752
Fax: 800-462-3130

Local:
Phone: 815-288-1471
Fax: 815-288-7945

www.alliedlocke.com