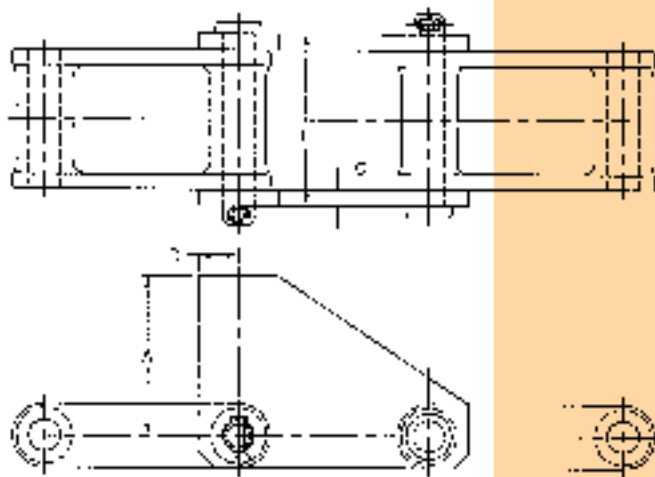




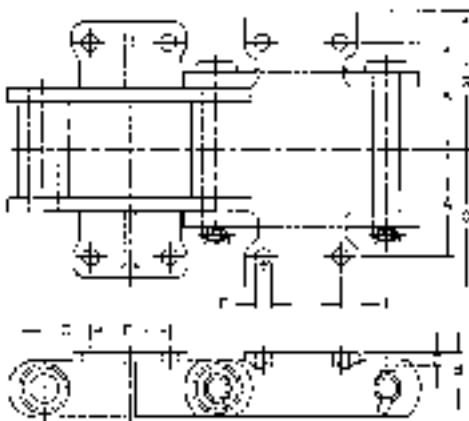
ALLIED-LOCKE INDUSTRIES INC.

CAST ALLOY COMBINATION CHAIN ATTACHMENTS



B1

CHAIN NO.	WT. IN. LBS.*	A	B	C	D
C102 1/2S	4.3	3 3/4	3 13/16	3/8	1
C132	9.7	5	5 1/2	1/2	1 1/4



K2 [CENTER LINK]

CHAIN NO.	WT. IN. LBS.*	A	B	C	D	E	F	G	H
C102B	3.5	2 1/8	1	1 1/8	3/8	1 3/4	5/16	3 9/32	9/16
C102 1/2	4.5	2 1/8	1	1 1/8	3/8	1 3/4	5/16	3 1/4	19/32
C110	4.6	2 1/16	2 3/32	2 3/32	3/8	1 13/16	1/4	3 1/4	19/32
C111	5.8	3 1/8	1 1/8	1 5/16	1/2	2 5/16	5/16	3 3/4	5/8
C131	2.8	2 1/16	1	2 5/32	1/2	1 1/2	5/16	2 1/16	5/8
C132	10.7	3 3/4	1 1/4	1 1/16	1/2	2 3/4	5/16	4 1/2	5/8

K2 [SIDE BARS]

CHAIN NO.	WT. IN. LBS.*	A	B	C	D†	E	F	G	H
C102B	3.5	2 1/8	1	1 1/8	3/8	1 3/4	5/16	3 9/32	9/16
C102 1/2	4.5	2 1/8	1 1/8	1 9/16	3/8	1 3/4	5/16	3 13/32	3/4
C110	4.6	2 1/16	1	2 1/8	3/8	1 3/4	3/8	3 5/16	5/8
C111	4.8	3 1/8	1 1/8	1 7/32	1/2†	2 5/16	5/16	3 3/4	9/16
C131	2.8	2 1/16	1	2 5/32	1/2	1 1/2	5/16	2 5/8	9/16
C132	7.7	3 25/32	1 1/4	1 21/32	1/2	2 3/4	5/16	4 1/2	5/8

Allied-Locke Industries Inc.
... reach for the star of quality
www.alliedlocke.com