

CAST STEEL DRAG CHAIN



Cast Steel Drag Chain



Plow Shape Design . . .

The complete link including the barrel, wings, and sidebars are plow-shaped for improved material handling efficiency.

Longer Pin Life . . .

"Induction Hardened" pins are furnished for increased wear life. Sidebar lugs protect the pin against abrasion and lock the pin into place to prevent pin rotation.

For Use In Cement Manufacturing, Hot Lime & Bulk Material Applications

Allied-Locke's cast Wing Link is the result of years of chain design, manufacturing and application experience. Our plow shaped barrel, wings and sidebars and our "T" head induction hardened pin are a first in chain design.

In 1997, **Allied-Locke Industries** acquired **Sheldon Engineering and Manufacturing, Inc.'s** cast steel product line, which has been in operation since 1983. **Sheldon** acquired a line of steel drag chain from **Remold, Inc.** in 1983. Included in this product line are **Portac, Kensington, Taylor-Wharton** and **James Mfg.** chain product lines with a history that dates back many decades.

Handsurfacing—Available . . .

Critical sliding surfaces on both sides of Wing Link are handsurfaced for additional wear life.

The Industry's Most Complete Line . . .

Allied-Locke manufactures Castlinks as well as a variety of steel, such as Alloy, Manganese, Carbon and Stainless.

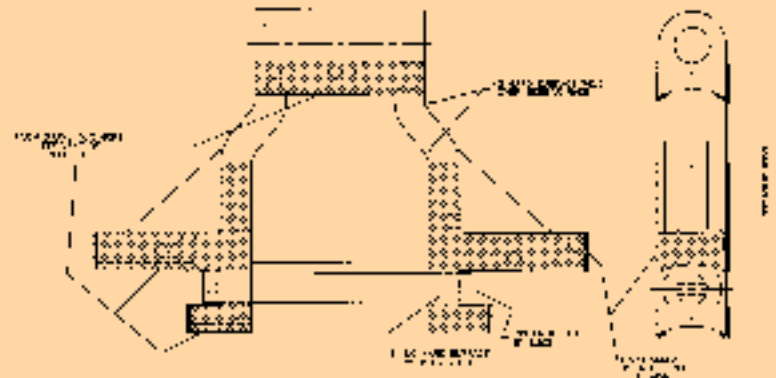
Allied-Locke Industries Inc.

. . . reach for the star of quality
www.alliedlocke.com



ALLIED-LOCKE INDUSTRIES INC.

CAST STEEL DRAG CHAIN



DIMENSIONS (INCHES) AND WEIGHTS (POUNDS)

ALLIED-LOCKE CHAIN NUMBER	FITCH IN INCHES	RECOM. WORKING LOAD LBS.	FIN LENGTH F	LENGTH OF BEARING B	MAX. ALLOW. SPROCKET FACE E	WING AND SIDEBAR THICKNESS C	SIDEBAR HEIGHT G	FIN DIA. D	A	AVERAGE WEIGHT PER FT. LBS.
SS157	6.050	18,200	6.94	4.63	2.75	.63	2.90	1.3	8	25
									10	27
									12	29
									14	31
SS121 & SS121	9.000	27,800	9.75	6.31	3.62	1.12	2.90	1.25	10	40
									12	42.2
									14	44.3
									16	46.9
									18	47.5
									20	49.5
									22	51.1
									24	52.7
26	54.3									
28	56.0									
30	57.0									
SS067	9.000	24,320	8.12	5.56	3.62	.75	2.90	1.25	10	29.7
									12	31.9
									14	33.6
									16	35.2
									18	36.8
									20	38.8
									22	40.4
24	42.0									
26	43.3									

NOTE: Dimensions subject to change. Certified dimensions of ordered material furnished on request.

• For Temperatures exceeding 1000° F, consult with Allied-Locke

Allied-Locke Industries Inc.
... chain - sprockets - buckets
www.alliedlocke.com

