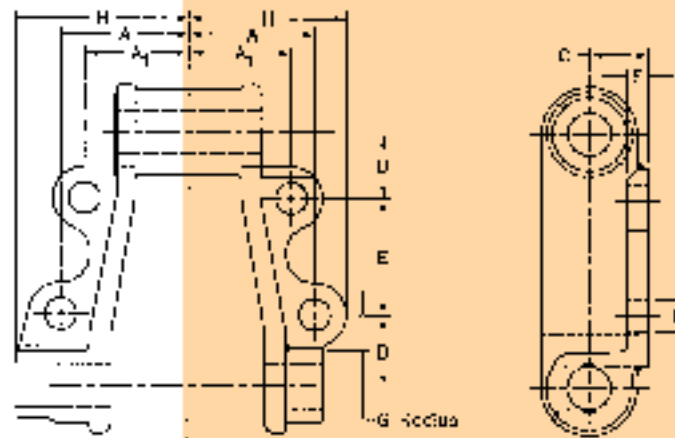




800 CLASS PINTLE CHAIN ATTACHMENTS



K2

CHAIN NO.	WT. PER LINK IN LBS. ‡	A	A'	B	C	D†	E	F	G	H
844	8.0	3	2 ⁷ / ₁₆	1 ⁵ / ₈	1 ⁵ / ₃₂	1/2	2 ³ / ₄	9/16	3/4	3 ³ / ₄
844MD	9.5	3	2 ⁷ / ₁₆	1 ⁹ / ₁₆	1 ³ / ₈	5/8*	2 ³ / ₄	1/2	3/4	3 ³ / ₄
844HD	14.3	3	2 ⁷ / ₁₆	1 ⁵ / ₈	1 1/2	5/8*	2 ³ / ₄	1/2	3/4	3 ³ / ₄

Allied-Locke Industries Inc.

... reach for the star of quality

Toll Free:

Phone: 800-435-7752

Fax: 800-462-3130

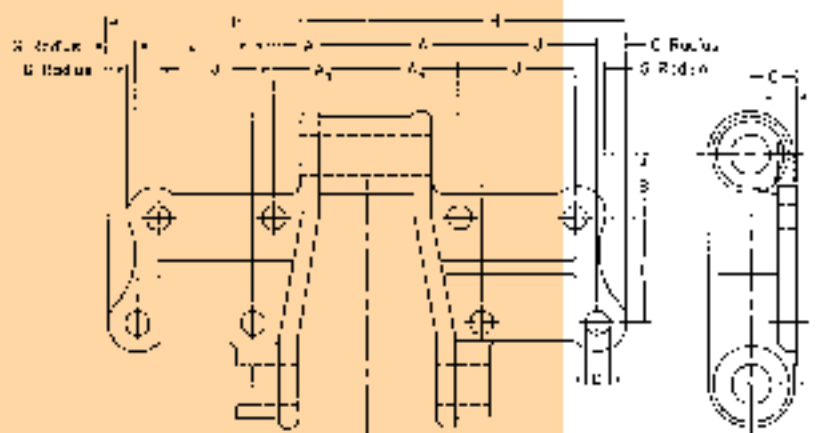
Local:

Phone: 815-288-1471

Fax: 815-288-7945

www.alliedlocke.com

800 CLASS PINTLE CHAIN ATTACHMENTS



K4

CHAIN NO.	WT. PER LINK IN LBS. ‡	A	A'	B	C	D †	E	F	G	H	J
844HD	18.3	3	27/16	1 5/8	1 1/2	5/8	2 3/4	1/2	3/4	6 3/4	3

Allied-Locke Industries Inc.
... chain - sprockets - buckets

Toll Free:
Phone: 800-435-7752
Fax: 800-462-3130

Local:
Phone: 815-288-1471
Fax: 815-288-7945

www.alliedlocke.com