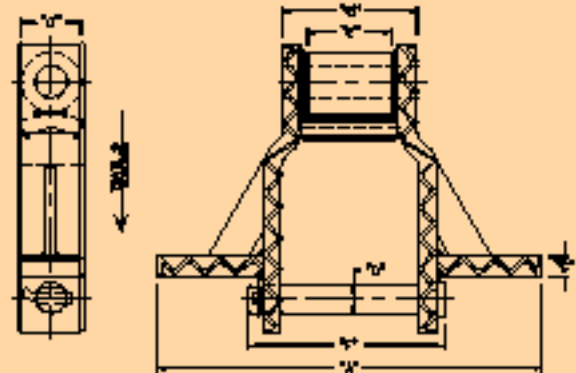




ALLIED-LOCKE INDUSTRIES INC.

FABRICATED STEEL DRAG CHAIN



DIMENSIONS (INCHES) AND WEIGHTS (POUNDS)

Heavy duty welded Steel drag chains for your most abrasive applications. All components heat-treated.

Induction Hardened Pins

High Interference fits on pins to insure pins will not rotate.

Hard surface welding to greatly extend the life of the chains sliding surfaces and digging edges.

Square edges provide optimum chain conveying.

ALLIED-LOCKE CHAIN NUMBER	PITCH IN INCHES	RECOM. WORKING LOAD LBS.	PIN LENGTH F	LENGTH OF BEARING B	MAX. ALLOW. SPROCKET FACE E	WING AND SIDEBAR THICKNESS C	SIDEBAR HEIGHT G	PIN DIA. D	A
WH05157	6.050	18,200	6.94	4.63	2.75	.63	2.50	1.13	8
									10
									12
									14
WH05121 & WH03121	9.000	27,600	9.75	6.31	3.62	1.12	2.50	1.25	10
									12
									14
									16
									18
									20
									22
									24
26									
WH03067	9.000	24,320	8.12	5.56	3.62	.75	2.50	1.25	10
									12
									14
									16
									18
									20
22									
24									
26									

NOTE: Dimensions subject to change. Certified dimensions of ordered material furnished on request

3c For Temperatures exceeding 1000°F, consult with Allied-Locke

Allied-Locke Industries Inc.
... the company that delivers

www.alliedlocke.com