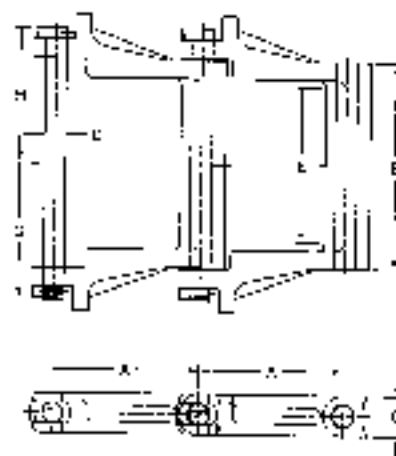


CAST ALLOY DRAG CHAIN



SD TYPE

CHAIN NO.	FITCH IN INCHES A	AVER. WEIGHT PER F.T. IN LBS.	WT. PER FIN	AVERAGE ULTIMATE STRENGTH IN LBS.	RECOM. WORKING LOAD IN LBS.	DIMENSIONS IN INCHES						
						BARREL LENGTH B	SIDE BAR WIDTH C	FIN DIA. D	MAX. SPKRT. WIDTH E	MAX. O.A. WIDTH F	FIN HEAD TO C G	FIN END TO C H
SD21	9.000	46.8	6.0	182,300	23,400	12 ⁷ / ₁₆	2 ¹ / ₂	1 ¹ / ₄	9 ¹ / ₂	—	8 ³ / ₁₆	8 ⁵ / ₁₆
SD23	9.000	41.8	4.2	172,800	23,400	8 ⁷ / ₁₆	2 ¹ / ₂	1 ¹ / ₄	5 ³ / ₄	—	6	6
SD27	9.000	30.7	2.9	160,900	20,100	6 ⁷ / ₈	2 ¹ / ₂	1 ¹ / ₈	4 ¹ / ₄	—	4 ¹³ / ₁₆	5 ¹ / ₁₆
SD28	9.000	26.0	2.8	139,400	17,600	12 ¹³ / ₁₆	2 ¹ / ₈	7 ⁸ / ₈	10 ¹ / ₈	—	8	8 ¹ / ₈
SD29	9.000	20.8	2.5	139,400	17,600	8 ¹³ / ₁₆	2 ¹ / ₈	7 ⁸ / ₈	6 ¹ / ₄	—	6	6 ¹ / ₈



Allied-Locke Industries Inc.
... reach for the star of quality

Toll Free:
Phone: 800-435-7752
Fax: 800-462-3130

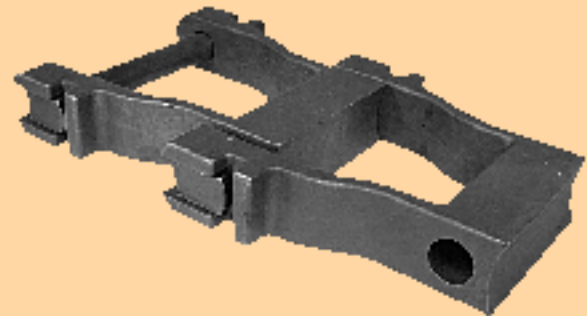
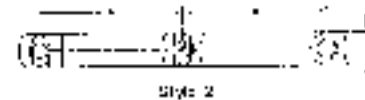
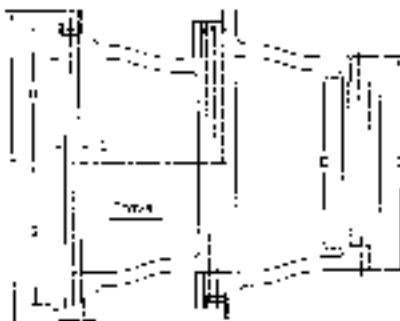
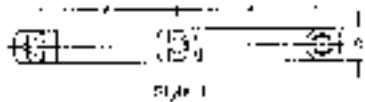
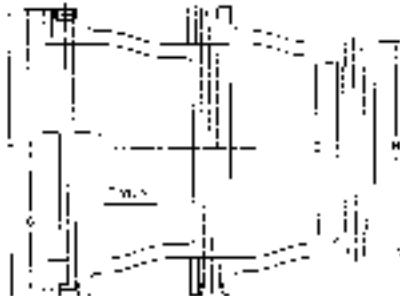
Local:
Phone: 815-288-1471
Fax: 815-288-7945

www.alliedlocke.com



CAST ALLOY DRAG CHAIN

HD TYPE



CHAIN NO.	STYLE NO.	FITCH IN INCHES A	AVER. WEIGHT PER FT. IN LBS.	WT. PER FIN	AVERAGE ULTIMATE STRENGTH IN LBS.	RECOM. WORKING LOAD IN LBS.	DIMENSIONS IN INCHES						
							BARREL LENGTH B	SIDE BAR WIDTH C	FIN DIA. D	MAX. SPRET. WIDTH E	MAX. O.A. WIDTH F	FIN HEAD TO C G	FIN END TO C H
1924	1	5.000	19.4	.9	62,000	7,800	7 ⁵ / ₈	1 ⁵ / ₈	³ / ₄	6	10 ¹ / ₈	4 ¹ / ₁₆	5 ¹ / ₁₆
1932	1	6.000	24.2	1.0	125,900	16,000	5 ¹ / ₄	2	1	3 ³ / ₄	8	4	4
1934	2	6.000	15.2	2.0	73,850	9,300	5 ⁵ / ₁₆	1 ³ / ₁₆	³ / ₄	4 ¹ / ₈	7 ¹ / ₂	3 ¹ / ₁₆	3 ¹³ / ₁₆
1932	1	9.000	27.5	2.5	211,700	26,800	5 ¹ / ₈	2 ¹ / ₂	1 ¹ / ₈	3	9	4 ¹ / ₄	4 ⁵ / ₈
1953	1	9.000	30.8	3.0	158,800	20,100	6 ⁷ / ₈	2 ¹ / ₂	1 ¹ / ₈	4 ³ / ₄	10	4 ¹ / ₁₆	5
1955	1	9.000	36.1	3.0	185,200	23,900	8 ¹ / ₂	2 ¹ / ₂	1 ¹ / ₈	5 ³ / ₄	12	5 ²⁵ / ₃₂	5 ³ / ₃₂
1958	1	9.000	39.5	4.5	167,900	23,400	8 ¹ / ₂	2 ¹ / ₂	1 ¹ / ₄	5 ³ / ₄	12	5 ²⁵ / ₃₂	5 ³ / ₃₂
1960	1	9.000	45.9	4.3	262,600	33,300	9 ¹ / ₄	2 ¹ / ₂	1 ¹ / ₄	6 ¹ / ₂	14	6 ³ / ₄	7 ¹ / ₈
1962	1	9.000	46.8	5.9	182,300	23,400	12 ⁷ / ₁₆	2 ¹ / ₂	1 ¹ / ₄	10 ¹ / ₄	16 ³ / ₈	7 ² / ₃₂	8 ¹¹ / ₃₂
1964	1	9.000	52.2	6.0	282,000	35,700	12 ¹ / ₁₆	2 ¹ / ₂	1 ¹ / ₄	10	18	8 ²⁵ / ₃₂	9 ¹ / ₃₂
1965	2	9.000	50.1	6.0	182,300	23,400	12 ⁷ / ₁₆	2 ¹ / ₂	1 ¹ / ₄	10 ¹ / ₄	18 ³ / ₈	7 ² / ₃₂	8 ¹¹ / ₃₂
1967	2	9.000	55.5	6.0	282,000	35,700	12 ¹ / ₁₆	2 ¹ / ₂	1 ¹ / ₄	10	20	8 ²⁵ / ₃₂	9 ¹ / ₃₂
1972	1	12.000	63.2	10.0	338,700	42,900	17 ⁷ / ₈	2 ³ / ₄	1 ³ / ₈	14 ³ / ₈	24	11 ³ / ₈	11 ⁷ / ₈
1976	2	12.000	70.2	10.0	338,700	42,900	17 ⁷ / ₈	2 ³ / ₄	1 ³ / ₈	14 ³ / ₈	26	11 ³ / ₈	11 ⁷ / ₈