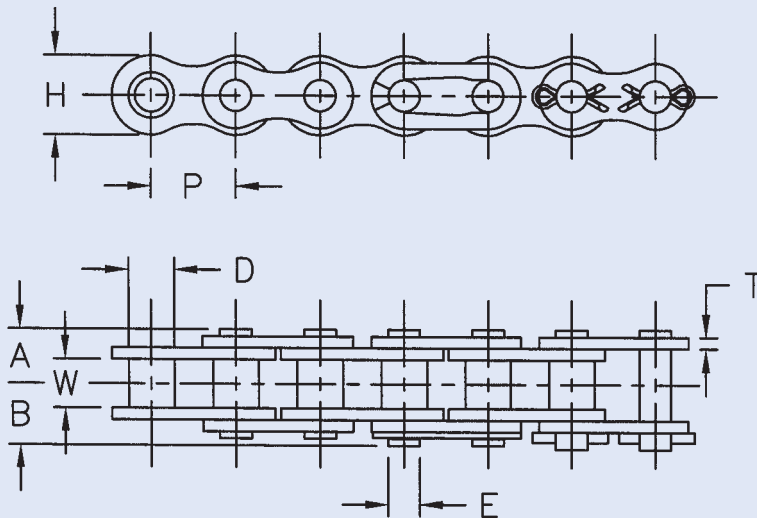


"600" SERIES (PHSS) STAINLESS STEEL CHAIN



Provides both corrosion resistance and good wear. The special 600 series stainless steel material is used in the round parts which allows for greater working loads. The side plates are "304" series stainless steel allowing increased corrosion resistance. 600 series stainless steel chains are ideal when FDA regulations are required to be met.

Dimensions In Inches

ANSI Chain No.	Pitch P	Roller		Riv. End to Center Line A	Conn. End to Center Line B	Link Plate		Pin Dia. E	Avg. Ultimate Strength Lbs.	Avg. Weight Lbs./Ft.
		Width W	Dia. D			Height H	Thickness T			
		W	D			H	T			
35 PHSS	3/8	.187	.200	.228	.276	.356	.050	.041	1,550	0.22
40 PHSS	1/2	.312	.312	.321	.368	.475	.058	.156	2,760	0.42
50 PHSS	5/8	.375	.400	.399	.455	.594	.079	.200	4,970	0.68
60 PHSS	3/4	.500	.469	.497	.551	.712	.093	.234	6,620	0.97
80 PHSS	1	.625	.625	.645	.724	.950	.125	.312	10,590	1.71
C2040 PHSS	1	.312	.312	.321	.368	.475	.058	.156	2,760	0.32
C2042 PHSS	1	.312	.625	.321	.368	.475	.058	.156	2,760	0.56
C2050 PHSS	1 1/4	.375	.400	.399	.455	.594	.079	.200	4,970	0.54
C2052 PHSS	1 1/4	.375	.750	.399	.455	.594	.079	.200	4,970	0.85
C2060 PHSS	1 1/2	.500	.469	.497	.551	.712	.093	.234	6,620	0.76
C2060H PHSS	1 1/2	.500	.469	.570	.625	.712	.125	.234	6,620	0.95
C2062H PHSS	1 1/2	.500	.875	.570	.625	.712	.125	.234	6,620	1.42
C2080H PHSS	2	.625	.625	.720	.873	.950	.157	.312	10,590	1.60
C2082H PHSS	2	.625	1.130	.720	.873	.950	.157	.312	10,590	2.31

Allied-Locke Industries Inc.

... reach for the star of quality

Toll Free:

Phone: 800-435-7752

Fax: 800-462-3130

Local:

Phone: 815-288-1471

Fax: 815-288-7945