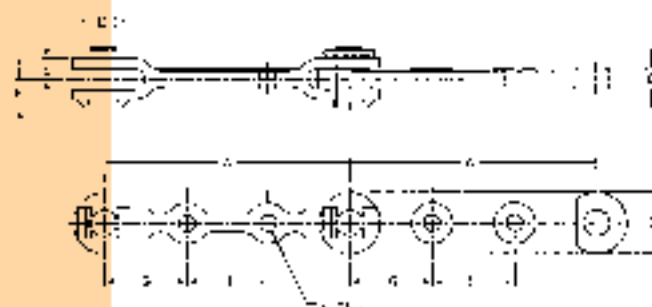


# WASH BOX (BAR TYPE) CHAIN



Allied-Locke Wash Box or Bar Type Chain has its primary application in coal preparation plants. This chain provides excellent service even under extensive exposure to the corrosive sulphur content found in wet coal washers. Standard male and female links with 2½ inch high side bars and 1 inch diameter T-Head pins are furnished. Special links can be specified for uses where take-up is limited and removing a pitch is advisable. This chain is also produced in a heavy-duty configuration which increases the chain height to 3 inches and the pin diameter to 1¼ inches for wash box uses requiring extra strength.



TYPE A



TYPE B

CHAIN NO.	TYPE	PITCH IN INCHES A	AVER. WEIGHT PER FT. IN LBS.	AVERAGE ULTIMATE STRENGTH IN LBS.	RECOM. WORKING LOAD IN LBS.	DIMENSIONS IN INCHES							
						BAR WIDTH B	BAR THICKN. C	PIN DIA. D	PIN END TO C E	PIN HEAD TO C F	G	H	J
5310	A	6.00	13.4	66,800	11,100	2½	15/16	1 1/8	1 3/8	1 3/8	—	—	—
5330	A	8.00	8.7	67,800	11,300	2	15/16	7/8	1 3/8	1 3/8	—	—	—
5350	A	10.31	8.5	102,400	12,100	2¼	1¼	7/8†	1 9/16	1 25/32	—	—	—
5370	A	12.00	7.6	91,100	15,200	2	15/16	7/8	1 3/8	1 3/8	—	—	—
5374	A	12.00	8.9	90,600	15,100	2½	1 5/16	1	1	1 3/8	4	4	5/8
5378	A	12.00	12.4	105,800	17,600	3	1	1¼	1	1 3/8	4	4	¾
5410	B	12.00	9.6	115,300	19,200	2½	1 5/16	1	1	1 5/16	—	—	—
5430	B	12.25	11.2	105,800	17,600	2½	1¼	1¼	1 9/16	1 19/32	—	—	—

‡Bolt diameter

†Available in 1" pin diameter

\*Available in ¾" and 1" diameters

Allied-Locke Industries Inc. . . . the company that delivers [www.alliedlocke.com](http://www.alliedlocke.com)