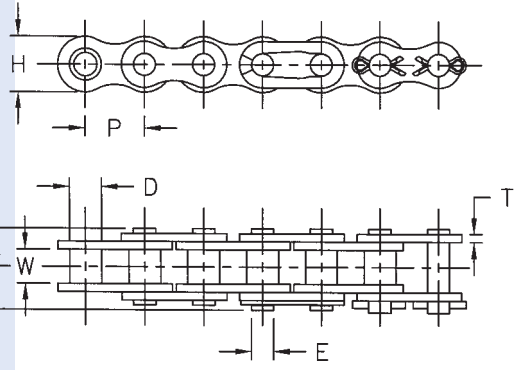


HOIST CHAIN O-RING CHAIN CHAIN DETACHERS

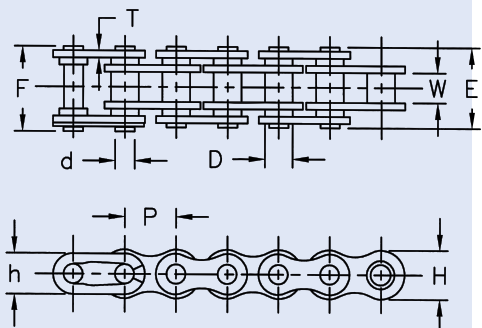


Manufactured with special pins of carbon alloy steel and through hardened, giving these chains a higher working load capacity and offering additional resistance to fatigue. Hoist chains work well for extra-capacity and slow speed hoist applications dimensionally equal to standard 50 and 60 ANSI chains, but will give less wear life than the standard equivalent size.



HOIST CHAIN

SINGLE STRAND		Dimensions In Inches								
ANSI Chain No.	Pitch P	Roller		Riv. End to Center Line A	Conn. End to Center Line B	Link Plate		Pin Dia. E	Avg. Ultimate Strength Lbs.	Avg. Weight Lbs./Ft.
		Width W	Dia. D			Height H	Thickness T			
50 HOIST (625)	5/8	.375	.400	.397	.455	.594	.079	.200	7,500	.68
60 HOIST (750)	3/4	.500	.469	.497	.551	.712	.093	.234	10,500	.97



O-RING CHAIN

Dimensions In Inches											
ANSI Chain No.	Pitch P	Roller		Pin			Link Plate			Avg. Ultimate Strength Lbs.	Avg. Weight Lbs./Ft.
		W	D	d	E	F (max.)	T	H	h		
40	1/2	.313	.312	.156	.788	.788	.059	.472	.409	4,080	0.45
50	5/8	.375	.400	.200	.921	.933	.078	.591	.512	6,770	0.73
60	3/4	.500	.469	.234	1.134	1.174	.094	.713	.614	9,640	1.09
80	1	.625	.625	.312	1.442	1.532	.126	.949	.819	16,320	1.90



CHAIN DETACHERS

Model	Chain Sizes
CB 35-50	#35 to #50
CB 60-100	#60 to #100

Allied-Locke Industries Inc.
... chain - sprockets - buckets

Toll Free: Phone: 800-435-7752 Fax: 800-462-3130
Local: Phone: 815-288-1471 Fax: 815-288-7945

www.alliedlocke.com