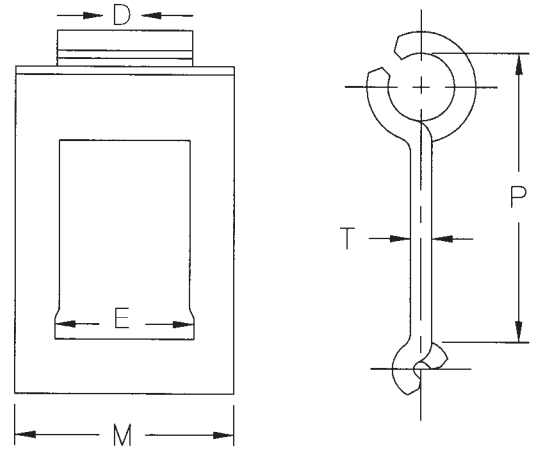
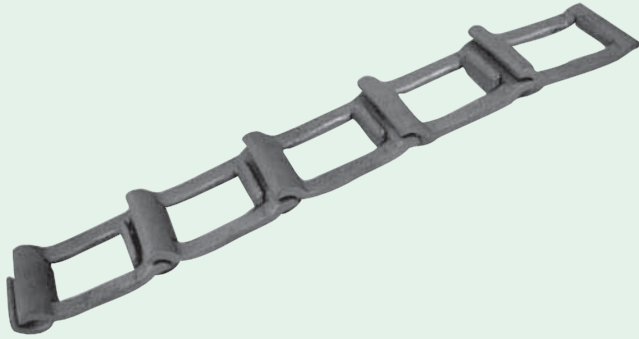


STEEL DETACHABLE CHAIN ATTACHMENT LINKS



Chain Number	Links in 10 Feet	Approx. Wt. Lbs. Per 100 Ft.	Average Ultimate Strength Lbs.	Minimum Tensile Strength Lbs.	P	M	E	D	T
25	133	20	950	760	.904	$\frac{45}{64}$.438	.422	.073±.006
32	104	32	1650	1320	1.157	$\frac{15}{16}$.610	.594	.090±.006
32W	104	39	1650	1320	1.157	$1\frac{1}{16}$.610	.594	.079±.006
33	86	39	1650	1320	1.402	$1\frac{1}{16}$.627	.610	.095±.006
42	87	50	2300	1680	1.375	$1\frac{7}{32}$.800	.781	.105±.006
50H	87	63	2600	2240	1.375	$1\frac{9}{32}$.798	.781	.125±.006
51	106	40	2100	1680	1.133	$1\frac{3}{32}$.720	.703	.105±.006
52	80	66	2700	2160	1.508	$1\frac{13}{32}$.760	.840	.125±.006
55	74	62	2800	2240	1.630	$1\frac{9}{32}$.813	.796	.125±.006
62	73	90	4200	3520	1.654	$1\frac{9}{16}$	1.002	.984	.148±.007
62A	72	131	5500	4000	1.664	$1\frac{15}{16}$	1.002	.984	.172±.007
62H	73	112	4400	3600	1.654	$1\frac{7}{8}$	1.002	.984	.148±.007
67H	52	137	5500	4400	2.313	$1\frac{7}{8}$	1.110	1.093	.185±.007
67XH	52	145	6800	5500	2.313	$1\frac{7}{8}$	1.110	1.093	.200±.010
67W	52	144	4800	3800	2.313	$2\frac{3}{8}$	1.110	1.093	.148±.007
70	60	130	4800	4000	2.013	$1\frac{15}{16}$	1.110	1.093	.172±.007
72	59	131	4800	4000	2.025	$1\frac{15}{16}$	1.110	1.093	.172±.007
S	41	130	4800	3840	2.906	$1\frac{15}{16}$	1.116	1.093	.172±.007
72 $\frac{1}{2}$	73	115	4500	3600	1.643	2	1.172	1.156	.148±.007

Tolerances for 10' section of SDC are + $\frac{3}{8}$ ", - $\frac{1}{8}$ "

Allied-Locke Industries Inc.
 . . . reach for the star of quality
www.alliedlocke.com