

CHAIN SELECTION CHART

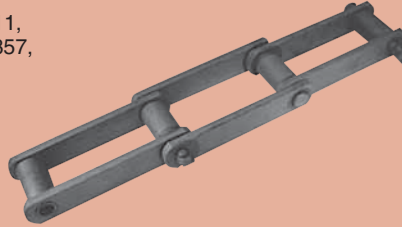


SS CLASS BUSHED STEEL CHAIN

Available Nos.: SS 102B, SS 110, SS 111, SS 131, SS 150+, SS 188, SS 856, SS 857, SS 859, SS 864

Available Pitches: 2.609" to 6.050"

Available Average Ultimate Strengths: 25,000 to 200,000 Lbs.

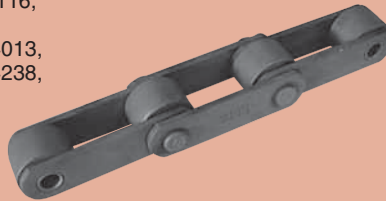


MSR CLASS BUSHED ROLLER STEEL CHAIN

Available Nos.: 81X, MSR 149, MSR 303, MSR 944+, MSR 996, MSR 1114, MSR 1116, MSR 1539, MSR 1617, MSR 2184P, MSR 2188, MSR 2198, MSR 3013, MSR 4013, MSR 4019, MSR 4119, MSR 4216, MSR 4238, MSR 6018, MSR 6238, MSR 9063

Available Pitches: 2.609" to 6.000"

Available Average Ultimate Strengths: 10,000 to 100,000 Lbs.

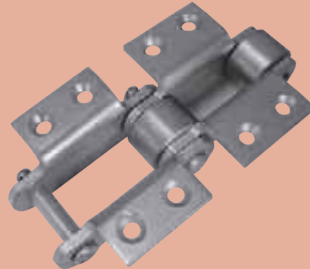


MSR BUSHED ROLLER STEEL MEAT PACKING CHAIN

Available Nos.: MSR 3420, MSR 6272

Available Pitches: 4.040", 6.000"

Available Average Ultimate Strength: 28,000 Lbs.

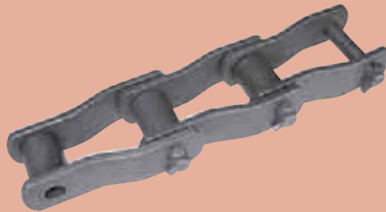


MXS & MSS OFFSET DRIVE CHAIN

Available Nos.: MXS 88B, MXS 432, MXS 881, MXS 882, MXS 1031, MXS 1242, MXS 1245, MXS 2070, MXS 3011, MXS 3075, MXS 3514, MXS 4522, MXS 5031, MXS 5035, MXS 5542, MXS 6042, MXS 6965, MSS 6065, MSR 6560

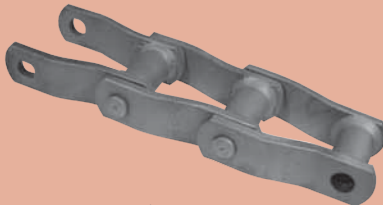
Available Pitches: 2.000" to 6.000"

Available Average Ultimate Strengths: 20,000 to 600,000 Lbs.



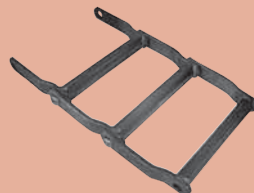
WELDED STEEL MILL CHAINS

Available Nos.: WH 78, WH 78-4, WH 82, WH 106, WH 106HD, WH 106XHD, WH 110, WH 111, WH 124, WH 124 HD, WH 132, WH 132HD, WH 150, WH 150 HD, WH 150 XHD



WELDED STEEL DRAG CHAINS

Available Nos.: WD 104, WD 110, WD 110, WD 120, WD 122, WD 480, WD 480.



RIVETLESS DROP FORGED CHAIN

Regular Type

Available Nos.: 468, 698, 998, 9118, 9148

Available Pitches: 3.031" to 9.031"

Available Average Ultimate Strengths: 24,000 to 300,000 Lbs.



X TYPE

Available Nos.: X 348, X 458, X 658, X 678

Available Pitches: 3.041" to 6.031"

Available Average Ultimate Strengths: 24,000 to 85,000 Lbs.

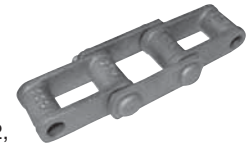


COMBINATION CHAIN

Available Nos.: C 55, C 55L, C 60, C 77, C 102B, C 102½, C 110, C 111, C 111C, C 131, C 132, MPB 132, MPB 132C, PW 132, C 133, C 188, BRH 188

Available Pitches: 1.631" to 6.050"

Available Average Ultimate Strengths: 12,150 to 67,500 Lbs.



"H" CLASS MILL CHAIN

Available Nos.: H 60, H 74, H 78, H 79, H 82, H 87, H 124

Available Pitches: 2.308" to 4.000"

Available Average Ultimate Strengths: 9,450 to 40,500 Lbs.

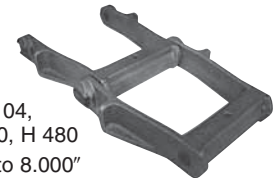


"H" CLASS REFUSE DRAG CHAIN

Available Nos.: H 102, H 104, H 110, H 112, H 116, H 120, H 480

Available Pitches: 5.000" to 8.000"

Available Average Ultimate Strengths: 36,400 to 52,000 Lbs.

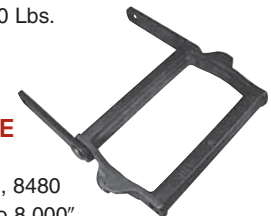


COMBINATION REFUSE DRAG CHAIN

Available Nos.: 6104, 6110, 8480

Available Pitches: 6.000" to 8.000"

Available Average Ultimate Strengths: 54,500 to 73,000 Lbs.





CHAIN SELECTION CHART

"H" CLASS TRANSFER CHAIN

Available Nos.: H 78A, H 78B, H 130,
H 131, H 138

Available Pitches: 2.609" to 4.000"

Available Average Ultimate Strengths:
18,200 to 29,900 Lbs.



COMBINATION TRANSFER CHAIN

Available Nos.: C 55A, C 55B, C 55D

Available Pitches: 1.631"

Available Average Ultimate Strength:
11,700 Lbs.



400 CLASS PINTLE CHAIN

Available Nos.:

442, 445, 452, 455, 462,
477, 488, 4103

Available Pitches: 1.375" to 3.075"

Available Average Ultimate Strengths:
7,800 to 28,600 Lbs.



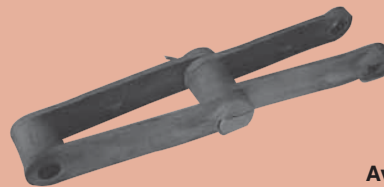
700 CLASS PINTLE CHAIN

Available Nos.:

720, 720S, MS 720S, 730,
MS 730, 788

Available Pitches: 2.609" to 6.000"

Available Average Ultimate Strengths:
22,750 to 42,000 Lbs.

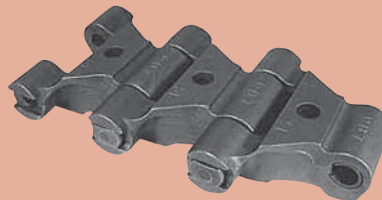


900 CLASS PINTLE CHAIN

Available No.: 907

Available Pitch: 3.170"

Available Average
Ultimate Strength:
32,500 Lbs.



DETACHABLE CHAIN

Available Nos.:

25, 32, 42, 45, 51, S 51, 52,
55, 57, 62, S 62, 67, 75,
77, 78, 88, 103, 124

Available Pitches: .902" to 4.063"

Available Average
Ultimate Strengths:
880 to 21,250 Lbs.



SPECIAL PURPOSE MC 33 PINTLE CHAIN

Available Nos.: MC 33, DF 3498,
DF 3500, DF 3910

Available Pitches: 1.750"-3.000"

Available Average
Ultimate Strength:
12,000 to 48,000 Lbs.

