

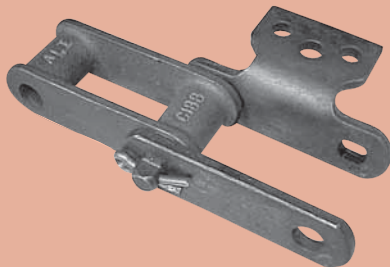
ATTACHMENT SELECTION CHART



TYPE "A"

Available for:

SS Class Bushed
Steel Chain
MSR Class Bushed Roller
Steel Chain
Combination Chain
"H" Class Mill Chain
400 Class Pintle Chain
700 Class Pintle Chain
Detachable Chain



TYPE "AM"

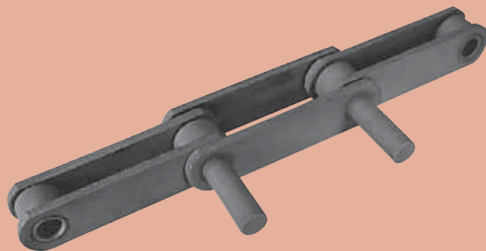
Available for: 700 Class Pintle Chain



TYPE "D"

Available for:

MSR Class Bushed Roller Steel Chain
400 Class Pintle Chain
Detachable Chain



TYPE "E"

Available for:

400 Class Pintle Chain
900 Class Pintle Chain



TYPE "F"

Available for:

Combination Chain
"H" Class Mill Chain
400 Class Pintle Chain
700 Class Pintle Chain
Detachable Chain



TYPE "G"

Available for:

SS Class Bushed
Steel Chain
MSR Class Bushed Roller
Steel Chain
Combination Chain
"H" Class Mill Chain
400 Class Pintle Chain
Detachable Chain



Allied-Locke Industries Inc.

. . . chain - sprockets - buckets

Toll Free:

Phone: 800-435-7752

Fax: 800-462-3130

Local:

Phone: 815-288-1471

Fax: 815-288-7945

www.alliedlocke.com



ATTACHMENT SELECTION CHART

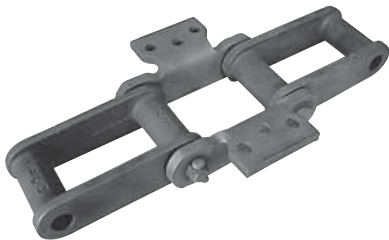
TYPE "H"

Available for:
"H" Class Mill Chain



TYPE "K"

Available for:
SS Class Bushed
Steel Chain
MSR Class Bushed Roller
Steel Chain
Combination Chain
"H" Class Mill Chain
400 Class Pintle Chain
700 Class Pintle Chain
Detachable Chain



TYPE "M"

Available for:
700 Class Mill Chain



TYPE "S"

Available for:
SS Class Bushed Steel
Chain
Combination Chain



"BUCKETS"

Styles Available:
AC
MD
Plastic
Fab Steel
Manganese
Chain & belt
punchings available



Allied-Locke Industries Inc.

... the company that delivers
www.alliedlocke.com