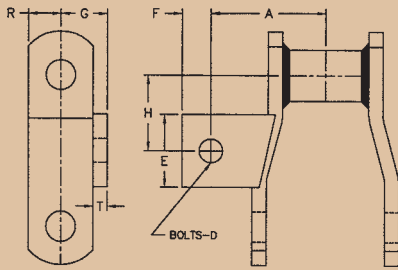


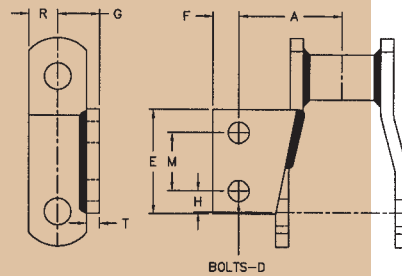
WELDED MILL CHAIN ATTACHMENTS



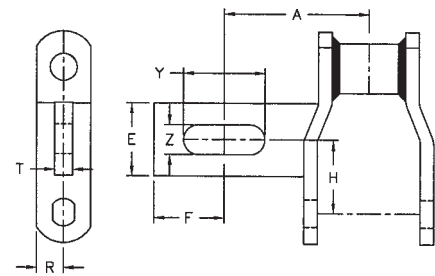
A1 ATTACHMENT



A2 ATTACHMENT

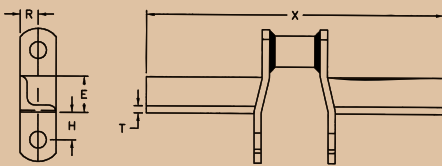


A225 ATTACHMENT

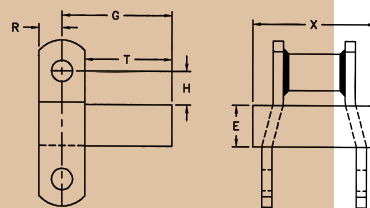


ATTACHMENT NUMBER	CHAIN NUMBER	WEIGHT PER FOOT LBS.	A	D	E	F	G	H	K	M	R	T	X	Y	Z
A1	WH78	4.97	2.00	.38	1.25	.50	.81	1.25	—	—	.56	.25	—	—	—
A1	WH82	6.50	2.13	.38	1.75	.62	.94	1.50	—	—	.62	.25	—	—	—
A1	WH124	8.40	2.62	.62	2.00	.62	1.13	1.81	—	—	.75	.38	—	—	—
A2	WH78	4.50	2.00	.38	2.13	.50	.78	.41	—	1.13	.56	.25	—	—	—
A2	WH82	6.00	2.13	.38	2.25	.62	.94	.50	—	1.25	.62	.31	—	—	—
A2	WH124	10.00	2.62	.38	3.00	.88	1.13	.88	—	1.94	.75	.38	—	—	—
A2	WH132	17.00	3.75	.50	4.00	.75	1.50	1.62	—	2.75	1.00	.50	—	—	—
A225	WH124	8.90	4.00	—	2.00	1.94	—	2.00	—	—	.75	.50	—	2.25	.88
F10	WH82	4.80	—	—	1.25	—	—	.94	—	—	.63	.25	10.25	—	—
F30	WH78	9.90	—	—	1.00	—	2.69	.81	—	—	.56	2.13	3.00	—	—
F659	WH124	13.10	—	—	1.75	—	4.75	.50	—	—	.75	—	6.59	—	—

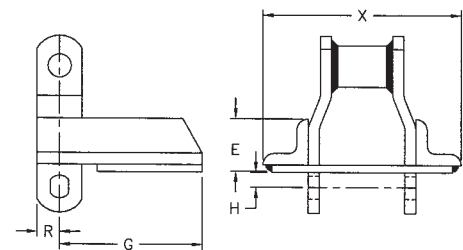
F10 ATTACHMENT



F30 ATTACHMENT



F659 ATTACHMENT



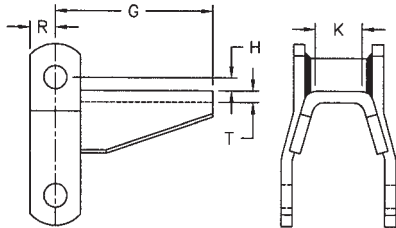
Allied-Locke Industries Inc.
 . . . the company that delivers
www.alliedlocke.com

We are able to
 custom manufacture
 attachments per your
 specific request.

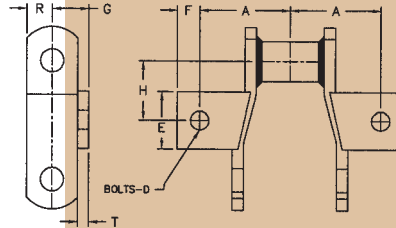


WELDED MILL CHAIN ATTACHMENTS

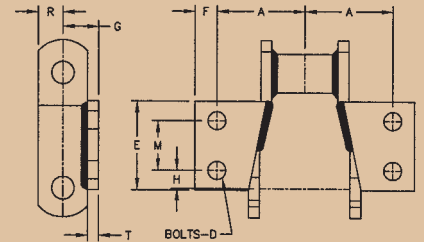
H2 ATTACHMENT



K1 ATTACHMENT

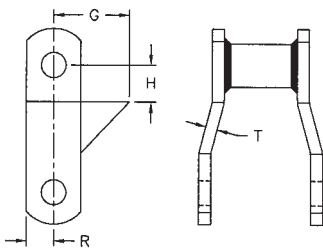


K2 ATTACHMENT

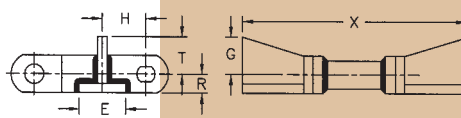


ATTACHMENT NUMBER	CHAIN NUMBER	WEIGHT PER FOOT LBS.	A	D	E	F	G	H	K	M	R	T	X	Y	Z
H2	WH78	4.75	—	—	—	—	3.56	.31	1.10	—	.56	.25	—	—	—
H2	WH82	9.00	—	—	—	—	3.62	.62	1.13	—	.62	.19	—	—	—
K1	WH78	4.97	2.00	.38	1.25	.50	.81	1.25	—	—	.56	.25	—	—	—
K1	WH82	6.50	2.13	.38	1.75	.62	.94	1.50	—	—	.62	.25	—	—	—
K1	WH124	11.70	2.62	.62	2.00	.62	1.13	1.81	—	—	.75	.38	—	—	—
K2	WH78	5.00	2.00	.38	2.13	.50	.78	.41	—	1.13	.56	.25	—	—	—
K2	WH82	8.00	2.13	.38	2.25	.62	.94	.50	—	1.25	.62	.31	—	—	—
K2	WH124	12.00	2.62	.38	3.00	.62	1.13	.88	—	1.94	.75	.38	—	—	—
K2	WH132	19.00	3.75	.50	4.00	.75	1.50	1.62	—	2.75	1.00	.50	—	—	—
RR	WH78	4.70	—	—	—	—	1.50	.75	—	—	.56	.25	—	—	—
RR	WH82	7.00	—	—	—	—	1.75	.81	—	—	.62	.25	—	—	—
RR	WH124	10.00	—	—	—	—	1.88	1.50	—	—	.75	.38	—	—	—
A11-Cradle	WH132	26.00	—	—	2.50	—	2.00	2.35	—	—	1.00	.50	11.00	—	—
C-Cradle	WH132	29.00	—	—	3.50	—	2.00	2.62	—	—	1.00	1.00	11.00	—	—
Side Lift Chair	WH132	17.50	—	—	—	—	11.00	—	—	—	1.00	9.25	—	—	—

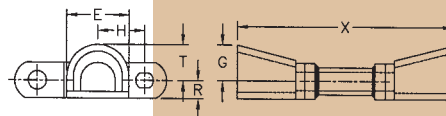
RR ATTACHMENT



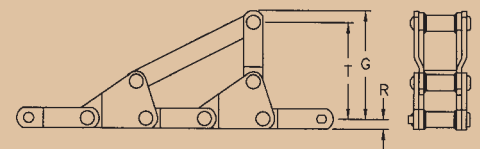
A11 CRADLE ATTACHMENT



C CRADLE ATTACHMENT



SIDE LIFT CHAIR ATT.



Allied-Locke Industries Inc.
 . . . reach for the star of quality
www.alliedlocke.com

**We are able to custom
 manufacture attachments
 per your specific request.**