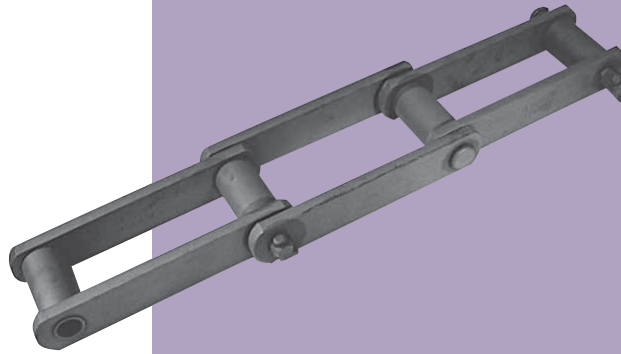




SS CLASS BUSHED STEEL CHAIN



ORDERING AND APPLICATION DATA

	MOLINE CHAIN NO.	PITCH IN INCHES	LINKS PER 10 FEET	AVERAGE WEIGHT PER FOOT LBS.	AVERAGE ULTIMATE STRENGTH LBS.	RECOMMENDED MAXIMUM WORKING LOAD-LBS.	CHAIN AND ATTACHMENT CONSTRUCTION	ATTACHMENTS AVAILABLE
2.609" PITCH CHAIN	SS 188*	2.609	46	3.8	25,000	2,750	Cottered or Riveted	A1/A2, A22, G19, K1/K2, S1
3.075" PITCH CHAIN	SS 131	3.075	39	7.4	40,000	4,500	Cottered or Riveted	A1, A2, K1, K2, S1
4.000" PITCH CHAIN	SS 102B	4.000	30	6.9	40,000	6,300	Cottered or Riveted	A2, K2, S1
4.760" PITCH CHAIN	SS 111	4.760	25.5	10.2	50,000	8,850	Cottered or Riveted	A2, K2, S1
6.000" PITCH CHAIN	SS 110	6.000	20	6.3	40,000	6,300	Cottered or Riveted	A2, K2
	SS 856	6.000	20	16.5	100,000	14,000	Cottered or Riveted	K2, K3, K6, K24, K35
	SS 857	6.000	20	21.0	130,000	14,000	Cottered Only	K44
	SS 859	6.000	20	34.0	200,000	21,800	Cottered Only	K44
6.050" PITCH CHAIN	SS 150+	6.050	20	16.6	100,000	15,100	Cottered or Riveted	K2, K3, S1
7.000" PITCH CHAIN	SS 864	7.000	17	31.0	200,000	21,000	Cottered only	K443

*NOTE: Bushing with milled ends used on SS188. Balance of SS Class Bushed Steel Chain manufactured with round bushing press fitted into side bars.

Allied-Locke Industries Inc.
... the company that delivers

Toll Free:

Phone: 800-435-7752

Fax: 800-462-3130

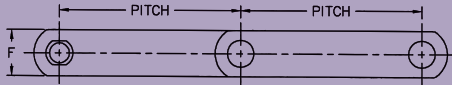
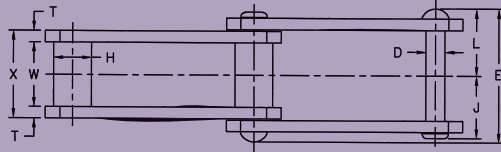
Local:

Phone: 815-288-1471

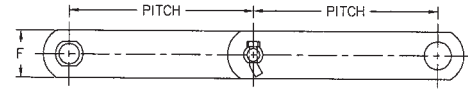
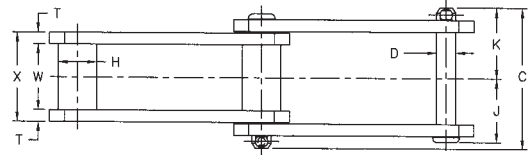
Fax: 815-288-7945

www.alliedlocke.com

SS CLASS BUSHED STEEL CHAIN



RIVETED



COTTERED

Available in riveted and cottered construction
Cottered furnished unless otherwise specified

CHAIN PITCH	MOLINE CHAIN NO.	DIMENSIONS IN DECIMAL INCHES											
		PITCH	OVER-ALL WIDTH-COTTERED C	DIAMETER OF PIN D	OVER-ALL WIDTH-RIVETED E	HEIGHT OF SIDEBARS F	DIAMETER OF BUSHING H	HEAD OF PIN TO CENTER LINE J	END OF PIN TO CENTER LINE-COTTERED K	END OF PIN TO CENTER LINE-RIVETED L	THICKNESS OF SIDEBARS T	DISTANCE BETWEEN INNER SIDEBARS W	OVER-ALL LENGTH OF BUSHINGS X
2.609"	SS 188*	2.609	2.69	0.500	2.50	1.12	0.88	1.25	1.34	1.25	0.25	1.06	1.56
3.075"	SS 131	3.075	3.75	0.625	3.50	1.50	1.25	1.62	1.88	1.75	0.38	1.31	2.06
4.000"	SS 102B	4.000	4.53	0.625	4.38	1.50	1.00	2.05	2.27	2.19	0.38	2.12	2.88
4.760"	SS 111	4.760	5.44	0.750	5.00	2.00	1.44	2.38	2.72	2.50	0.38	2.62	3.38
6.000"	SS 110	6.000	4.53	0.625	4.38	1.50	1.25	2.05	2.27	2.19	0.38	2.12	2.88
	SS 856	6.000	6.31	1.000	6.00	2.50	1.75	2.91	3.16	3.00	0.50	3.00	4.00
	SS 857	6.000	#5.94	1.000	—	**3.25	1.75	2.81	3.12	—	0.50	3.00	4.00
	SS 859	6.000	#7.25	1.250	—	©4.00	2.38	3.44	3.81	—	0.62	3.75	5.00
6.050"	SS 150+	6.050	6.62	1.000	6.50	2.50	1.75	3.06	3.31	3.25	0.50	3.31	4.31
7.000"	SS 864	7.000	#7.25	1.250	—	©4.00	2.38	3.44	3.81	—	0.62	3.75	5.00

**Inside sidebar, outside sidebar=2.50; © Inside sidebar, outside sidebar=3.00; # Pin Heads same side

*NOTE: Bushings with milled ends used on SS188. Balance of SS Class Bushed Steel Chain manufactured with round bushings press fitted into side bars.

Allied-Locke Industries Inc.

... reach for the star of quality

Toll Free:

Phone: 800-435-7752

Fax: 800-462-3130

Local:

Phone: 815-288-1471

Fax: 815-288-7945

www.alliedlocke.com