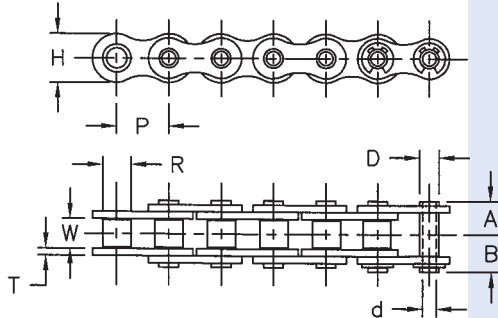




HOLLOW PIN CHAIN SIDE BOW CHAIN

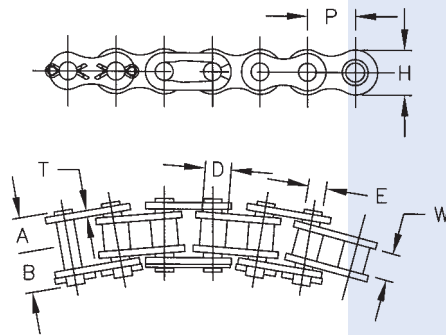


HOLLOW PIN

Hollow pin chain is identical to ANSI roller chain running on standard ANSI sprockets. The unique "hollow" pin feature provides unlimited conveyor versatility, allowing easy insertion of cross rods or attachments to preassembled chains at desired spacing.

"HP" is added to the chain numbers for identification.

Dimensions In Inches											
Chain No.	Pitch P	Roller		Pin				Link Plate		Avg. Ultimate Strength Lbs.	Avg. Weight Lbs./Ft.
		Width W	Dia. R	Out Dia. D	Ins. Dia. d	Length A B		Height H	Thickness T		
40HP	1/2	.312	.312	.224	.157	.327	.362	.475	.058	2,867	.35
50HP	5/8	.375	.400	.287	.201	.404	.453	.594	.079	4,631	.55
60HP	3/4	.500	.469	.331	.235	.508	.555	.712	.073	5,754	.67
80HP	1	.625	.625	.449	.318	.638	.758	.950	.125	11,466	1.41
C2040HP	1	.312	.312	.224	.161	.326	.353	.475	.058	2,870	0.28
C2042HP	1	.312	.625	.224	.161	.326	.353	.475	.058	2,870	0.56
C2050HP	1 1/4	.375	.400	.287	.201	.403	.427	.594	.079	4,640	0.48
C2052HP	1 1/4	.375	.750	.287	.201	.403	.427	.594	.079	4,640	0.86
C2060HP	1 1/2	.500	.469	.331	.235	.508	.548	.712	.093	5,960	0.68
C2062HP	1 1/2	.500	.875	.331	.235	.508	.548	.712	.093	5,960	1.24
C2080HP	2	.625	.625	.449	.318	.655	.693	.950	.125	11,470	1.71
C2082HP	2	.625	1.126	.449	.318	.655	.693	.950	.125	11,470	2.41



SIDE BOW CHAIN

Side bow chain offers extra clearance between pins, bushings, and side-plates to allow flexibility around curves or in twists.

"SB" is added to the chain numbers for identification.

Dimensions In Inches										
ANSI Chain No.	Pitch P	Roller		Riv. End to Center Line A	Conn. End to Center Line B	Link Plate		Pin Dia. E	Avg. Ultimate Strength Lbs.	Avg. Weight Lbs./Ft.
		Width W	Dia. D			Height H	Thickness T			
40SB	1/2	.312	.312	.333	.391	.475	.058	.156	3,270	0.41
50SB	5/8	.375	.400	.420	.475	.594	.079	.200	5,430	0.67
60SB	3/4	.500	.469	.523	.578	.712	.093	.234	7,610	0.96
80SB	1	.625	.621	.676	.731	.950	.125	.312	12,790	1.70