



ISO 9001

Registered Quality System



ALI Chain #	Pitch	Competitor's Cross Reference				
		Rexnord	Link Belt	UST	Jeffery	Pyramid
MXS3120	1.500	3120CM	3120	-	IS532	-
MXS432	1.654	R423	ROA622	US622	IS622	-
MXS3140	1.750	3140CM	3140	-	IS1742	-
MXS2070	2.000	B3113	-	US2065	IS2065	PC2010
MXS3160	2.000	3160CM	-	3160	IS2059	-
MXS3180	2.250	3180-P	-	-	-	-
MXS881	2.609	R778	RO881	US881	IS881	-
MXS882	2.609	R588	RO882/LSX882	US882	JS882	-
MXS3011	3.067	AX1568	RO2512	US3011	JS3011	PC3012
MXS1031	3.075	R1033	RO1031	US1031	JS1031	PC3010
MXS1032	3.075	R1035	RO1032	-	-	-
MXS3075	3.075	R1037	RO40HYPER	US3075	JS3075	PC3010
MXS3514	3.500	RX238	RO2814	US3514	IS3514J	PC3514
MXS1242	4.063	R1248	LSX1242M	US1242	JS4014	PC4014N
MXS1245	4.073	RX1245	RO3315	US1245	JS1245A	PC4015A
MSR1353	4.090	-	-	-	-	-
MXS4522	4.500	RO635	RO3618	US4522	IS4522	PC4518
MXS5031	5.000	RX1207	RO4020	US5031	JS5031	PC5020
MXS5035	5.000	RO1315	-	US5035	16505AAA	PC5022
MXS5542	5.500	RO1356	RO5542	US5542	JS5542	PC5524
MXS88B	5.750	1301	-	US5738	JS1632	PC5724
MXS6042	6.000	RX1306	RO4824	US6042	JS6042R	PC6024
MSS6065	6.000	RX9506H	-	US6066	-	-
MSR6060	6.000	X1365	-	-	-	-
MSR7126	6.000	-	-	-	-	-
MSR6560	6.500	-	-	-	-	-
MXS6565	6.500	X1311	RO6555	US6566	JS6555	PC6528
MXS7065	7.000	-	-	-	JS7055	-



ISO 9001

Registered Quality System

Steel
Drive
Chain

ALLIED-LOCKE INDUSTRIES, INC.

800.435.7752 - PHONE

800.462.3130 - FAX

info@alliedlocke.com

www.alliedlocke.com

1088 Corrigedor Road • P.O. Box 509
Dixon, IL 61021

*Proudly Manufacturing in the
U.S.A. Since 1965*

www.alliedlocke.com

www.alliedlocke.com

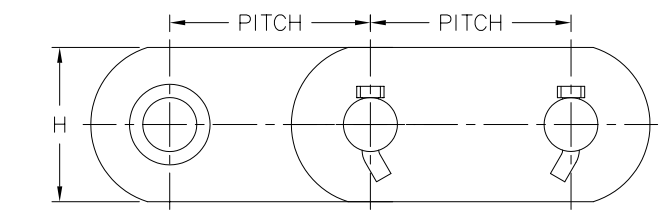
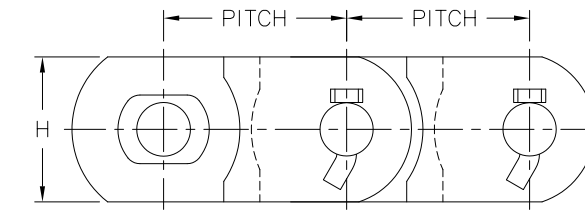
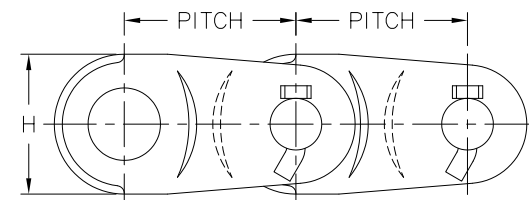
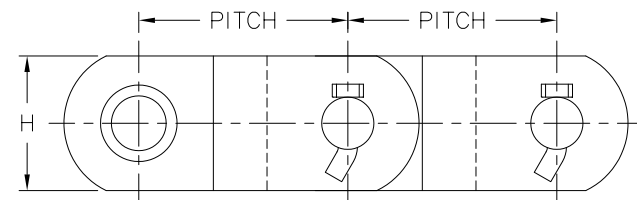
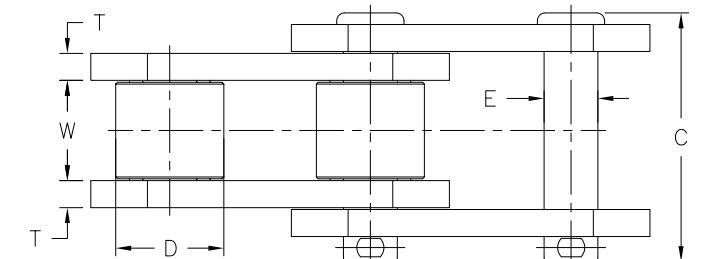
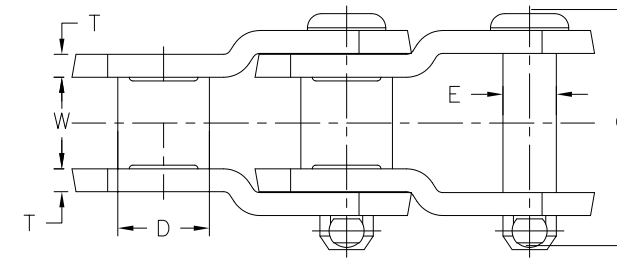
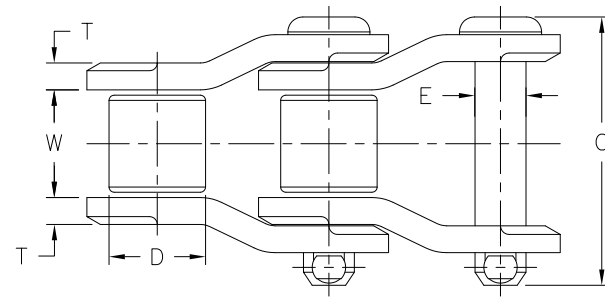
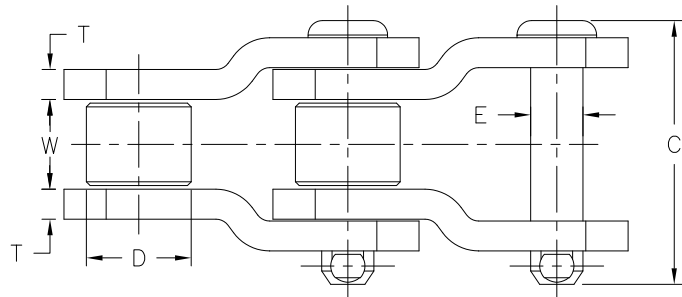
ALLIED-LOCKE



- Available in 1.500- 7.000" Pitch
- Ultimate Strengths from 20,000- 600,000 lbs.
- Multiple Strands Available

See back page for competitor interchange chart

←
Direction of Travel



Style 1

Style 2

Style 3

Style 4

A-L Chain Number	DIMENSIONS IN INCHES							AVG. ULTIMATE STRENGTH LBS	WORKING LOAD LBS	AVG. WEIGHT PER FT. LBS	LINKS PER 10 FEET	CHAIN TYPE
	PITCH	PIN	COTT.	ROLLER	Link Plate							
		E	C	D	W	H	T					
MXS3120	1.500	.437	2.25	.88	.97	1.42	.19	28,000	2,700	4.0	80	2
MXS432	1.654	.437	2.28	.88	1.00	1.12	.19	20,000	2,100	3.5	73	1
MXS3140	1.750	.500	2.48	1.00	.97	1.66	.22	35,900	3,200	5.2	69	2
MXS2070	2.000	.593	3.22	1.12	1.25	1.62	.31	70,000	3,800	7.6	60	2
MXS3160	2.000	.562	2.89	1.13	1.75	1.90	.25	49,900	4,400	6.7	60	2
MXS3180	2.250	.687	3.23	1.41	1.38	2.14	.29	62,000	6,100	9.6	53	2
MXS881	2.609	.438	2.38	.88	1.12	1.12	.19	20,000	2,300	3.0	46	1
MXS882	2.609	.438	2.62	.88	1.12	1.12	.25	26,000	2,500	3.6	46	1
MXS3011	3.067	.750	3.94	1.62	1.56	2.25	.38	110,000	6,100	13.2	39	1
MXS1031	3.075	.625	3.38	1.25	1.50	1.50	.31	48,000	4,650	7.3	39	1
MXS1032	3.075	.625	3.43	1.25	1.50	1.62	.31	60,000	4,650	7.7	39	1
MXS3075	3.075	.648	3.69	1.25	1.50	1.75	.31	75,000	5,100	9.0	39	1
MXS3514	3.500	.875	4.44	1.75	1.50	2.25	.50	140,000	7,650	16.0	34	1
MXS1242	4.063	.875	4.88	1.75	1.94	2.25	.50	140,000	9,000	15.6	30	1
MXS1245	4.073	.938	5.12	1.78	1.94	2.38	.56	170,000	10,050	18.6	30	1
MSR1353*	4.090	1.312	5.75	2.62	2.25	3.50	.62	210,000	16,000	32.6	30	4
MXS4522	4.500	1.100	5.25	2.25	2.06	3.00	.56	220,000	12,300	25.0	27	1
MXS5031	5.000	1.250	6.25	2.50	2.75	3.50	.62	310,000	17,500	36.0	24	1
MXS5035	5.000	1.375	6.62	2.50	2.56	3.50	.75	350,000	19,600	38.1	24	1
MXS5542	5.500	1.500	7.12	3.00	3.00	4.00	.75	420,000	23,700	49.1	22	1
MXS88B	5.750	1.500	7.12	3.00	3.00	4.00	.75	420,000	23,700	49.0	21	1
MXS6042	6.000	1.500	7.12	3.00	3.00	4.00	.75	420,000	23,700	46.5	20	1
MSS6065*	6.000	1.750	7.29	3.00	3.00	4.75	.75	600,000	27,600	51.7	20	3
MSR6060**	6.000	1.750	8.06	3.50	3.25	5.00	.88	600,000	30,600	68.0	20	4
MSR7126	6.000	.625	3.19	1.25	1.50	2.00	.31	25,000	4,600	6.7	20	4
MSR6560*	6.500	1.750	8.06	3.50	3.25	5.00	.88	600,000	30,600	72.0	19	4
MXS6565	6.500	1.750	8.06	3.50	3.25	5.00	.88	600,000	30,600	78.5	19	3
MXS7065	7.000	1.750	8.06	3.50	3.25	5.00	.88	600,000	30,600	67.0	17	1

Chain Number	Pins		Bushings		Rollers		Sidebars	
	STD. MAT'L	STD. H.T.	STD. MAT'L	Case Hardened	STD. MAT'L	Thru Hardened	STD. MAT'L	Heat Treated
MXS3120	ALLOY	THRU HARDENED	ALLOY	●	ALLOY	●	ALLOY	●
MXS432	CAR STL	CASE HARDENED	CAR STL	●	CAR STL	●	CAR STL	●
MXS3140	ALLOY	THRU HARDENED	ALLOY	●	ALLOY	●	ALLOY	●
MXS2070	ALLOY	THRU HARDENED	ALLOY	●	ALLOY	●	ALLOY	●
MXS3160	ALLOY	THRU HARDENED	ALLOY	●	ALLOY	●	ALLOY	●
MXS3180	ALLOY	THRU HARDENED	ALLOY	●	ALLOY	●	ALLOY	●
MXS881	CAR STL	CASE HARDENED	CAR STL	●	CAR STL	●	CAR STL	●
MXS882	CAR STL	CASE HARDENED	CAR STL	●	CAR STL	●	CAR STL	●
MXS3011	ALLOY	IND. HARDENED	ALLOY	●	ALLOY	●	ALLOY	●
MXS1031	ALLOY	IND. HARDENED	ALLOY	●	ALLOY	●	CAR STL	●
MXS1032	ALLOY	IND. HARDENED	ALLOY	●	ALLOY	●	ALLOY	●
MXS3075	ALLOY	IND. HARDENED	ALLOY	●	ALLOY	●	ALLOY	●
MXS3514	ALLOY	IND. HARDENED	ALLOY	●	ALLOY	●	ALLOY	●
MXS1242	ALLOY	IND. HARDENED	ALLOY	●	ALLOY	●	ALLOY	●
MXS1245	ALLOY	IND. HARDENED	ALLOY	●	ALLOY	●	ALLOY	●
MSR1353	ALLOY	IND. HARDENED	ALLOY	●	ALLOY	●	ALLOY	●
MXS4522	ALLOY	IND. HARDENED	ALLOY	●	ALLOY	●	ALLOY	●
MXS5031	ALLOY	IND. HARDENED	ALLOY	●	ALLOY	●	ALLOY	●
MXS5035	ALLOY	IND. HARDENED	ALLOY	●	ALLOY	●	ALLOY	●
MXS5542	ALLOY	IND. HARDENED	ALLOY	●	ALLOY	●	ALLOY	●
MXS88B	ALLOY	IND. HARDENED	ALLOY	●	ALLOY	●	ALLOY	●
MXS6042	ALLOY	IND. HARDENED	ALLOY	●	ALLOY	●	ALLOY	●
MSS6065	ALLOY	IND. HARDENED	ALLOY	Thru-hardened	-	-	ALLOY	●
MSR6060	ALLOY	IND. HARDENED	ALLOY	●	ALLOY	●	ALLOY	●
MSR7126	ALLOY	CASE HARDENED	ALLOY	Case-hardened	ALLOY	Case-hardened	ALLOY	●
MSR6560	ALLOY	IND. HARDENED	ALLOY	●	ALLOY	●	ALLOY	●
MXS6565	ALLOY	IND. HARDENED	ALLOY	●	ALLOY	●	ALLOY	●
MXS7065	ALLOY	IND. HARDENED	ALLOY	●	ALLOY	●	ALLOY	●

* MSR Class Straight Sidebar Drive Chain - Roller Chain
 ** MSS Class Offset Sidebar Drive Chain - Rollerless