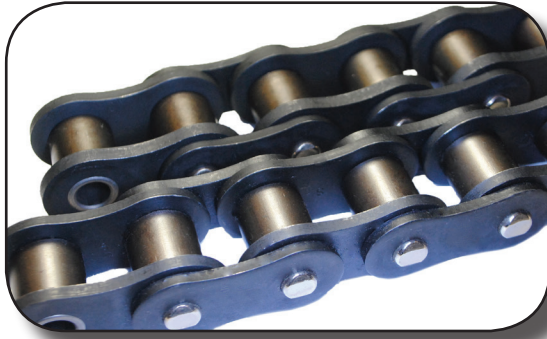


ALLIED-LOCKE INDUSTRIES

INCORPORATED



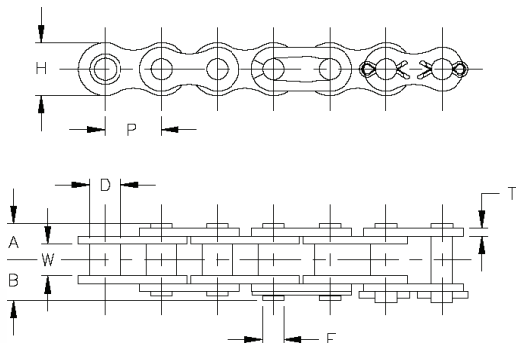
SLB™

Lube Free Solutions

The popularity of our SLB™ lube free precision roller chains has been expanding over the years as the benefits are being realized in a wide range of markets. This chain offers an effective solution to our customers who need to eliminate lubricants from their process. If you need cleanliness and less maintenance, we have your solution. Our SLB™ chains are assembled with nickel plated pins and specially treated side plates. We also use heat treated, sintered, oil-impregnated bushings that are made of materials that resist wear and promote smooth action. Our carefully selected roller material enhances the wear capacity of the chain. SLB™ chains are interchangeable with standard ANSI sprockets. SLB™ chains are also available in heavy series, multiple strands and metric sizes.

Dimensions In Inches										
Chain No.	Pitch P	Roller		Riv. End to Center Line A	Conn. End to Center Line B	Link Plate		Pin Diameter E	Avg. Ultimate Strength Lbs.	Avg. Weight Lbs./Ft.
		Width W	Dia. D			Height H	Thickness T			
35SLB	0.375	0.187	0.200	0.228	0.274	0.346	0.050	0.118	2360	0.20
40SLB	0.500	0.312	0.312	0.324	0.406	0.472	0.060	0.157	4185	0.41
50SLB	0.625	0.374	0.400	0.400	0.488	0.591	0.080	0.200	6850	0.71
60SLB	0.750	0.500	0.469	0.501	0.601	0.709	0.094	0.235	9240	1.04
80SLB	1.000	0.613	0.625	0.650	0.781	0.949	0.125	0.313	17500	1.79
100SLB	1.250	0.752	0.750	0.795	0.913	1.185	0.156	0.376	25300	2.70
120SLB	1.500	1.000	0.875	1.005	1.174	1.421	0.187	0.437	37500	4.03
C2040SLB	1.000	0.312	0.312	0.324	0.406	0.472	0.060	0.157	4185	0.32
C2050SLB	1.250	0.374	0.400	0.400	0.488	0.591	0.080	0.200	6850	0.54
C2060HSLB	1.500	0.500	0.469	0.567	0.665	0.709	0.125	0.235	9240	0.95
C2080HSLB	2.000	0.625	0.625	0.720	0.873	0.950	0.157	0.312	15152	1.60

Stocked at our warehouses in in Dixon, IL- Union, MS



ALLIED-LOCKE
 1088 CORRIGEDOR ROAD
 DIXON, IL 61021
 800-435-7752



ISO 9001
 Registered
 Quality System
 Dixon, IL Facility Only

WWW.ALLIEDLOCKE.COM