



ISO 9001

Registered Quality System

Chains and Sprockets for the

**PELLET MILL**

Industry

**ALLIED  
LOCKE**



[www.alliedlocke.com](http://www.alliedlocke.com)

# CHAINS

- Available in Carbon or Stainless Steel
- Chains Stocked in Multiple Locations
- Fast Turnaround for Less Downtime
- Single and Multiple Strands Available

Chain Number	Pitch	Working Load (lbs)	Ultimate Strength (lbs)	Sidebar Height	Sidebar Thickness	Weight per Ft. (lbs)
81X	2.609	3,000	24,800	1.13	0.16	2.4
81XHH	2.609	4,000	45,000	1.25	0.31	4.6
AL88XH	2.609	2,100	30,000	1.13	0.25	4.2
WH78	2.609	3,500	28,700	1.13	0.25	4.0
WH124	4.000	7,350	60,000	1.50	0.38	8.5
WH132	6.050	15,300	100,000	2.00	0.50	13.8
MXS2124	4.000	3,430	44,000	1.50	0.25	4.8
SS131	3.075	4,500	40,000	1.50	0.38	7.4
SS102B	4.000	6,300	40,000	1.50	0.38	6.9
SS150+	6.050	15,100	100,000	2.50	0.50	21.0
142 Standard	142mm	13,000	73,000	51mm	N/A	6.4

Partial listing of standard chains. Dimensions in inches unless otherwise noted.



Sales and Engineering Support Readily Available

# ATTACHMENTS



## Backing Plate Options

- Multiple Carbon or Stainless Options
- Custom Cuts and Bends for Every Application



CUSTOM  
BENDS



CLEANOUT  
CUP



CHANNEL



FLAT  
BAR



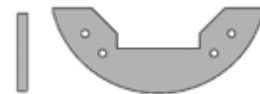
ANGLE



CUSTOM  
SHAPES

## Flight Options

- White, Green and Black UHMW Stocked
- Other Materials Available on Request
- Custom Bevels and Shapes Available





**ISO 9001**

Registered Quality System



## **ALLIED-LOCKE INDUSTRIES, INC.**

800.435.7752 - TOLL FREE PHONE

800.462.3130 - FAX

[info@alliedlocke.com](mailto:info@alliedlocke.com)

[www.alliedlocke.com](http://www.alliedlocke.com)

1088 Corrigan Road • P.O. Box 509

Dixon, IL 61021

CS187 rev. 2/15

1,000

[www.alliedlocke.com](http://www.alliedlocke.com)